

# Morph

Morph Management, 36 Jangmun-ro Yongsan-gu Seoul Korea ZIP 04393 | Phone: +82 2 797 7200



HAN JONG CHUL

Born in 1900

# Morph

Morph Management, 36 Jangmun-ro Yongsan-gu Seoul Korea ZIP 04393 | Phone: +82 2 797 7200



HAN JONG CHUL

Born in 1900

# Morph

Morph Management, 36 Jangmun-ro Yongsan-gu Seoul Korea ZIP 04393 | Phone: +82 2 797 7200



HAN JONG CHUL

Born in 1900

# Morph

Morph Management, 36 Jangmun-ro Yongsan-gu Seoul Korea ZIP 04393 | Phone: +82 2 797 7200



HAN JONG CHUL

Born in 1900

# Morph

Morph Management, 36 Jangmun-ro Yongsan-gu Seoul Korea ZIP 04393 | Phone: +82 2 797 7200



HAN JONG CHUL

Born in 1900

# Morph

Morph Management, 36 Jangmun-ro Yongsan-gu Seoul Korea ZIP 04393 | Phone: +82 2 797 7200



HAN JONG CHUL

Born in 1900

# Morph

Morph Management, 36 Jangmun-ro Yongsan-gu Seoul Korea ZIP 04393 | Phone: +82 2 797 7200



HAN JONG CHUL

Born in 1900

# Morph

Morph Management, 36 Jangmun-ro Yongsan-gu Seoul Korea ZIP 04393 | Phone: +82 2 797 7200



HAN JONG CHUL

Born in 1900



# Morph

Morph Management, 36 Jangmun-ro Yongsan-gu Seoul Korea ZIP 04393 | Phone: +82 2 797 7200



HAN JONG CHUL

Born in 1900

# Morph

Morph Management, 36 Jangmun-ro Yongsan-gu Seoul Korea ZIP 04393 | Phone: +82 2 797 7200



HAN JONG CHUL

Born in 1900

# Morph

Morph Management, 36 Jangmun-ro Yongsan-gu Seoul Korea ZIP 04393 | Phone: +82 2 797 7200



HAN JONG CHUL

Born in 1900

# Morph

Morph Management, 36 Jangmun-ro Yongsan-gu Seoul Korea ZIP 04393 | Phone: +82 2 797 7200



HAN JONG CHUL

Born in 1900

# Morph

Morph Management, 36 Jangmun-ro Yongsan-gu Seoul Korea ZIP 04393 | Phone: +82 2 797 7200



HAN JONG CHUL

Born in 1900

# Morph

Morph Management, 36 Jangmun-ro Yongsan-gu Seoul Korea ZIP 04393 | Phone: +82 2 797 7200



HAN JONG CHUL

Born in 1900

# Morph

Morph Management, 36 Jangmun-ro Yongsan-gu Seoul Korea ZIP 04393 | Phone: +82 2 797 7200

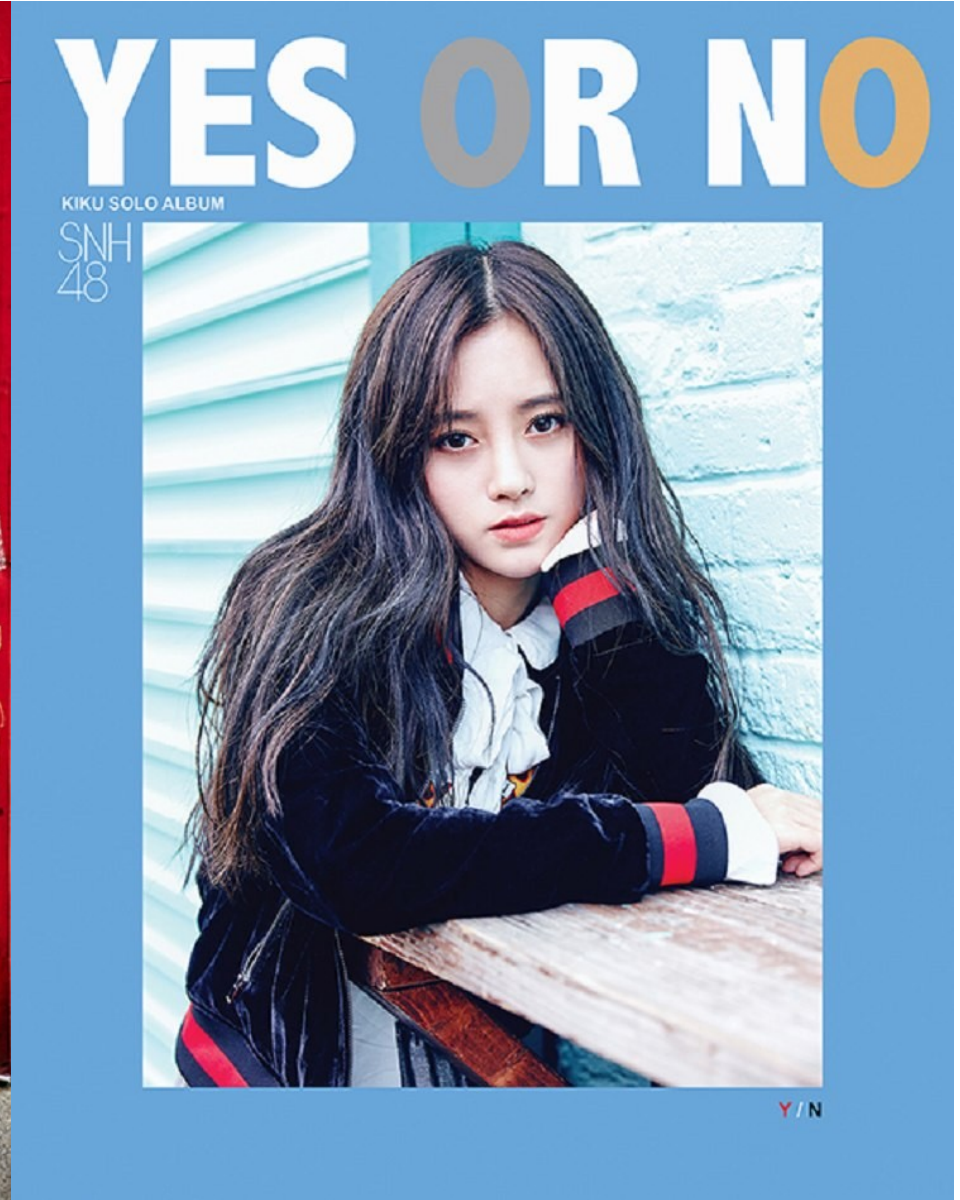


HAN JONG CHUL

Born in 1900

# Morph

Morph Management, 36 Jangmun-ro Yongsan-gu Seoul Korea ZIP 04393 | Phone: +82 2 797 7200



HAN JONG CHUL

Born in 1900



# Morph

Morph Management, 36 Jangmun-ro Yongsan-gu Seoul Korea ZIP 04393 | Phone: +82 2 797 7200



**AKIRA  
BEE  
DIAMOND  
ELIWA  
KIKI  
LYNN  
TAKO**

**SEVEN SENSES**



**HAN JONG CHUL**

Born in 1900

# Morph

Morph Management, 36 Jangmun-ro Yongsan-gu Seoul Korea ZIP 04393 | Phone: +82 2 797 7200



HAN JONG CHUL

Born in 1900

# Morph

Morph Management, 36 Jangmun-ro Yongsan-gu Seoul Korea ZIP 04393 | Phone: +82 2 797 7200



HAN JONG CHUL

Born in 1900

# Morph

Morph Management, 36 Jangmun-ro Yongsan-gu Seoul Korea ZIP 04393 | Phone: +82 2 797 7200



HAN JONG CHUL

Born in 1900

# Morph

Morph Management, 36 Jangmun-ro Yongsan-gu Seoul Korea ZIP 04393 | Phone: +82 2 797 7200



HAN JONG CHUL

Born in 1900

# Morph

Morph Management, 36 Jangmun-ro Yongsan-gu Seoul Korea ZIP 04393 | Phone: +82 2 797 7200



HAN JONG CHUL

Born in 1900

# Morph

Morph Management, 36 Jangmun-ro Yongsan-gu Seoul Korea ZIP 04393 | Phone: +82 2 797 7200



HAN JONG CHUL

Born in 1900

# Morph

Morph Management, 36 Jangmun-ro Yongsan-gu Seoul Korea ZIP 04393 | Phone: +82 2 797 7200



HAN JONG CHUL

Born in 1900



# Morph

Morph Management, 36 Jangmun-ro Yongsan-gu Seoul Korea ZIP 04393 | Phone: +82 2 797 7200

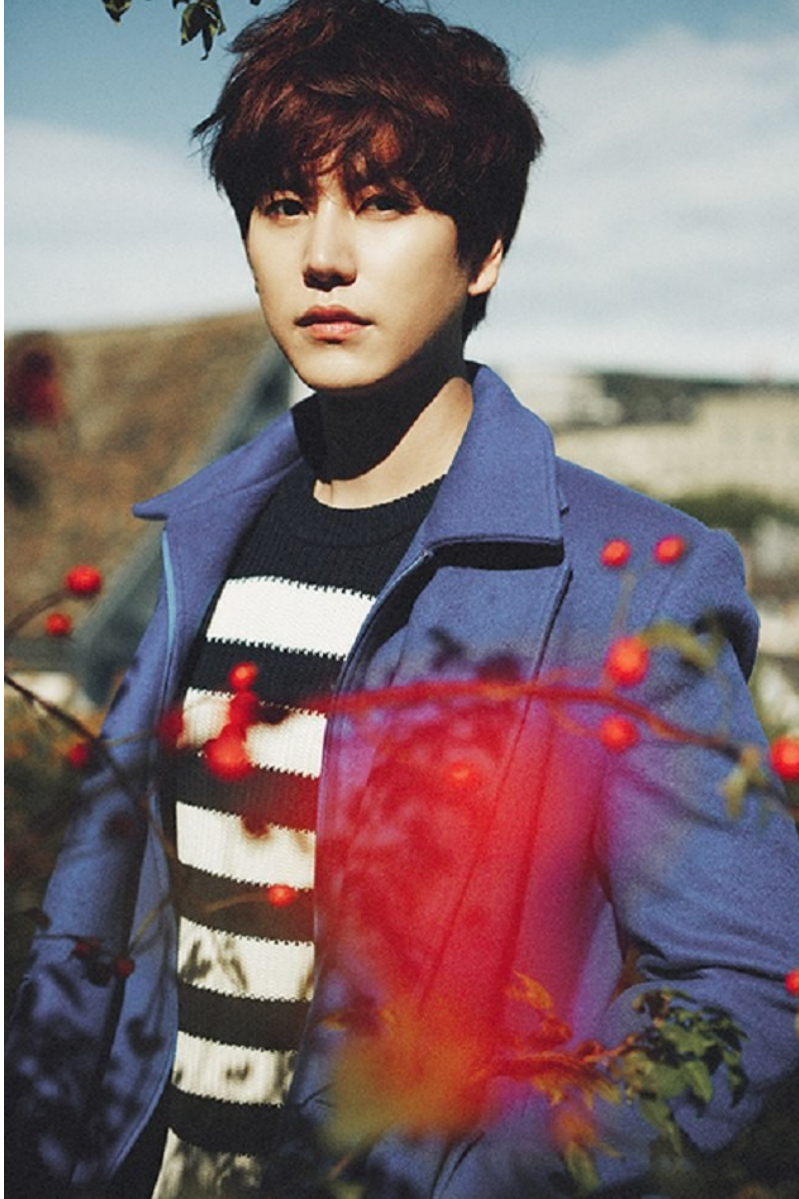


HAN JONG CHUL

Born in 1900

# Morph

Morph Management, 36 Jangmun-ro Yongsan-gu Seoul Korea ZIP 04393 | Phone: +82 2 797 7200



다 시 , 가 을 이 오 면

—  
KYUHYUN / THE SECOND MINI ALBUM

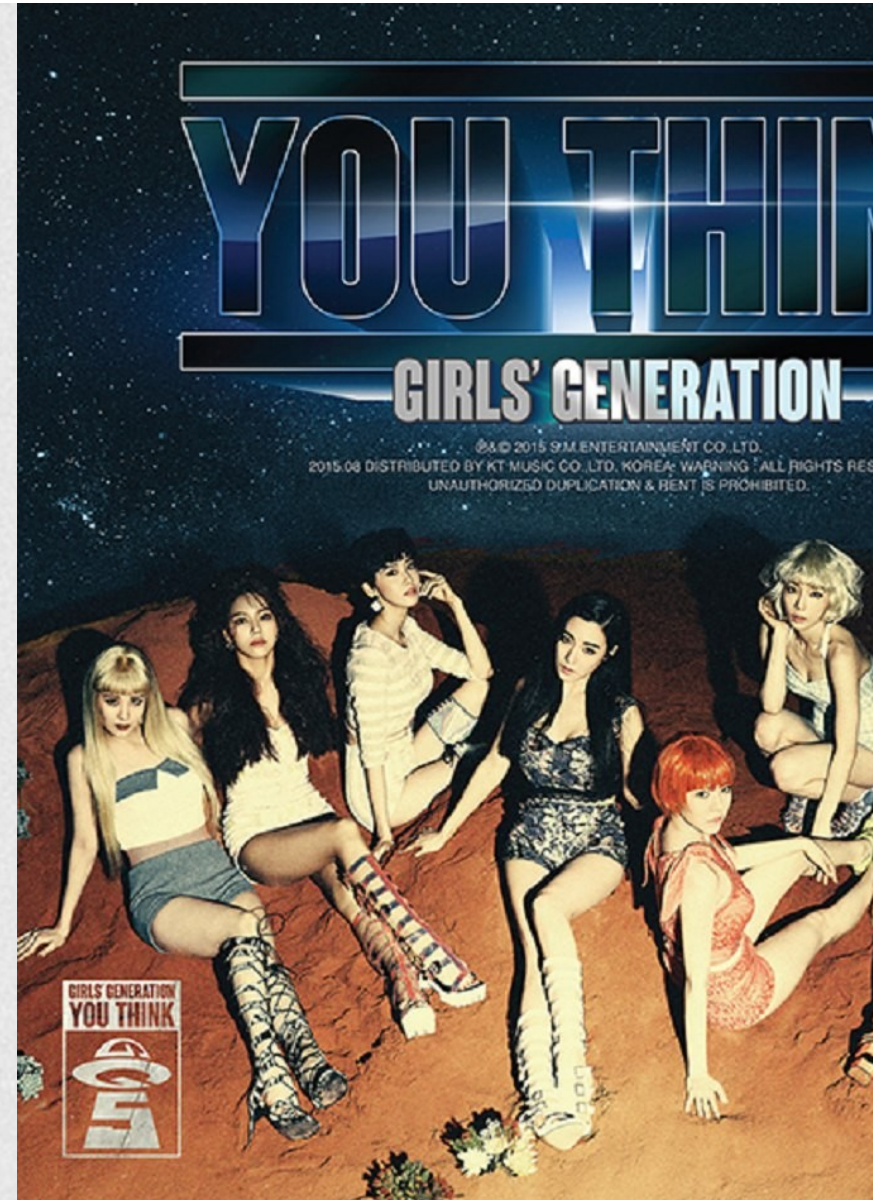


HAN JONG CHUL

Born in 1900

# Morph

Morph Management, 36 Jangmun-ro Yongsan-gu Seoul Korea ZIP 04393 | Phone: +82 2 797 7200



HAN JONG CHUL

Born in 1900

# Morph

Morph Management, 36 Jangmun-ro Yongsan-gu Seoul Korea ZIP 04393 | Phone: +82 2 797 7200



HAN JONG CHUL

Born in 1900

# Morph

Morph Management, 36 Jangmun-ro Yongsan-gu Seoul Korea ZIP 04393 | Phone: +82 2 797 7200



HAN JONG CHUL

Born in 1900

# Morph

Morph Management, 36 Jangmun-ro Yongsan-gu Seoul Korea ZIP 04393 | Phone: +82 2 797 7200



HAN JONG CHUL

Born in 1900

# Morph

Morph Management, 36 Jangmun-ro Yongsan-gu Seoul Korea ZIP 04393 | Phone: +82 2 797 7200



HAN JONG CHUL

Born in 1900

# Morph

Morph Management, 36 Jangmun-ro Yongsan-gu Seoul Korea ZIP 04393 | Phone: +82 2 797 7200

**SING FOR YOU**

©&© 2015 S.M. ENTERTAINMENT Co., Ltd.  
2015.12.12 Daily Rights by K2 MUSIC Corp. KOREA  
WARNING : All Rights Reserved. Unauthorized  
Duplication & Reprint is Prohibited. Printed in KOREA.



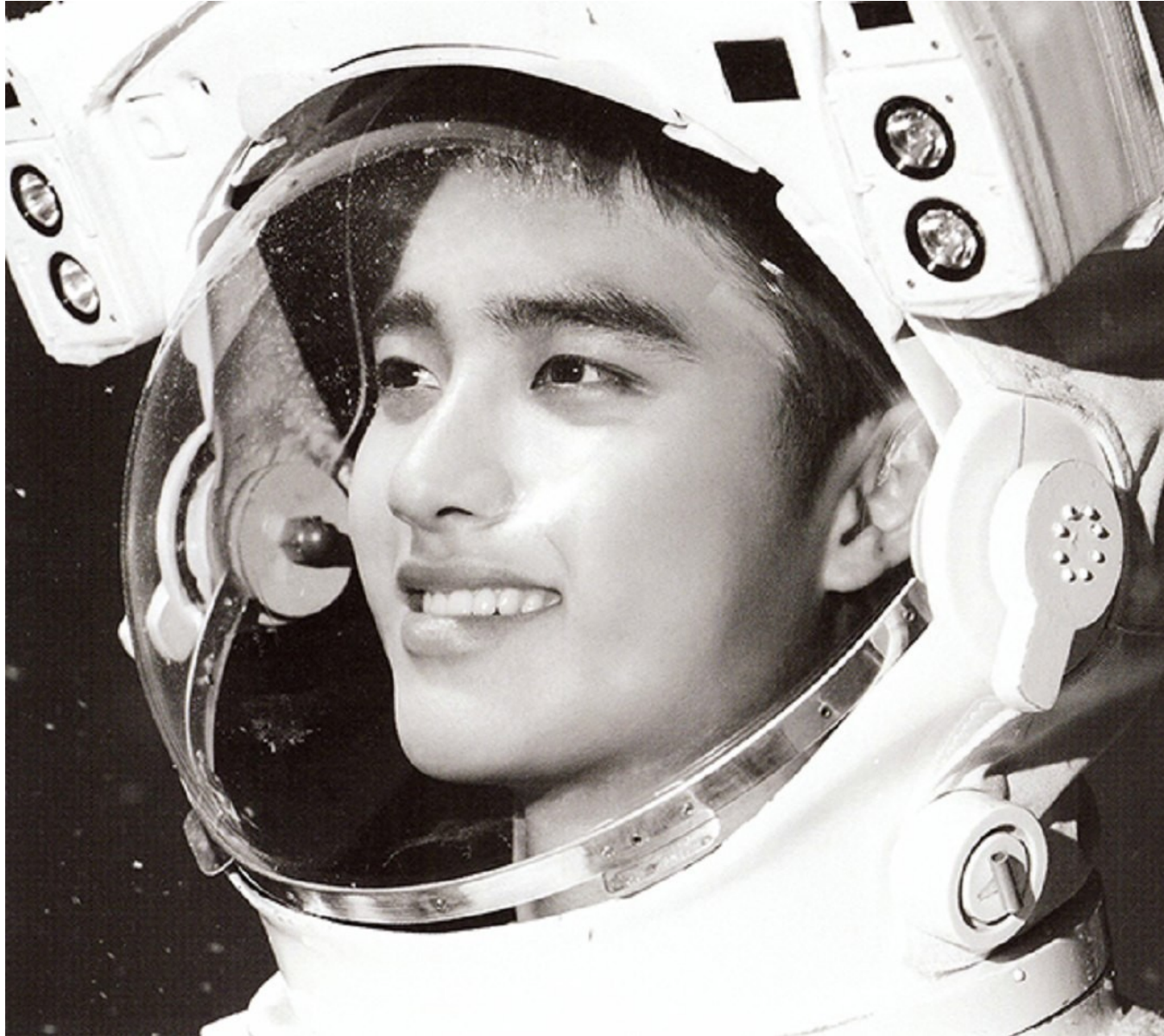
**HAN JONG CHUL**

Born in 1900



# Morph

Morph Management, 36 Jangmun-ro Yongsan-gu Seoul Korea ZIP 04393 | Phone: +82 2 797 7200



HAN JONG CHUL

Born in 1900

# Morph

Morph Management, 36 Jangmun-ro Yongsan-gu Seoul Korea ZIP 04393 | Phone: +82 2 797 7200



HAN JONG CHUL

Born in 1900

# Morph

Morph Management, 36 Jangmun-ro Yongsan-gu Seoul Korea ZIP 04393 | Phone: +82 2 797 7200



HAN JONG CHUL

Born in 1900