

Morph

Morph Management, 36 Jangmun-ro Yongsan-gu Seoul Korea ZIP 04393 | Phone: +82 2 797 7200



GIGI HARI (@gigi.hari)

Height 182/5'11.5" Bust 80/31.5" A Waist 61/24" Hips 85/33.5" Shoe 260mm Hair Blonde Eyes Green/Brown Born in 1994

Morph

Morph Management, 36 Jangmun-ro Yongsan-gu Seoul Korea ZIP 04393 | Phone: +82 2 797 7200



GIGI HARI (@gigi.hari)

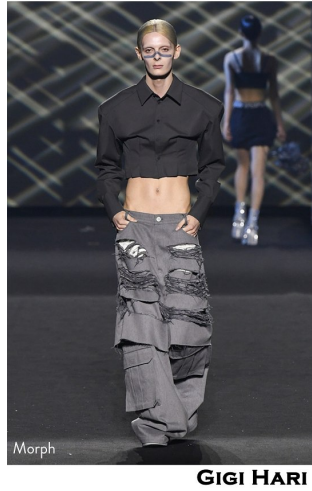
Height 182/5'11.5" Bust 80/31.5" A Waist 61/24" Hips 85/33.5" Shoe 260mm Hair Blonde Eyes Green/Brown Born in 1994

Morph

Morph Management, 36 Jangmun-ro Yongsan-gu Seoul Korea ZIP 04393 | Phone: +82 2 797 7200



PEOPLE OF THE WORLD
2024 S/S SEOUL FASHION WEEK



MAISON NICA
2024 S/S SEOUL FASHION WEEK



MAISON NICA
2024 S/S SEOUL FASHION WEEK



GIGI HARI (@gigi.hari)

Height 182/5'11.5" Bust 80/31.5" A Waist 61/24" Hips 85/33.5" Shoe 260mm Hair Blonde Eyes Green/Brown Born in 1994

Morph

Morph Management, 36 Jangmun-ro Yongsan-gu Seoul Korea ZIP 04393 | Phone: +82 2 797 7200

ENSUE
23SS SEOUL FASHION WEEK



GIGI HARI

GRAPHISTE MAN.G
23SS SEOUL FASHION WEEK



GIGI HARI

GRAPHISTE MAN.G
23SS SEOUL FASHION WEEK



GIGI HARI

HANACHA STUDIO
23SS SEOUL FASHION WEEK



GIGI HARI

SUNG JU
23SS SEOUL FASHION WEEK



GIGI HARI

GIGI HARI (@gigi.hari)

Height 182/5'11.5" Bust 80/31.5" A Waist 61/24" Hips 85/33.5" Shoe 260mm Hair Blonde Eyes Green/Brown Born in 1994