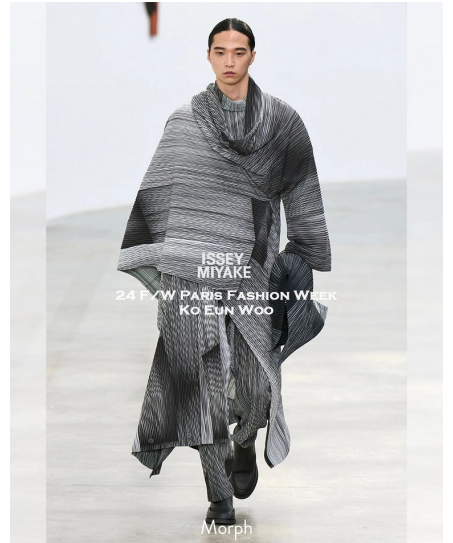
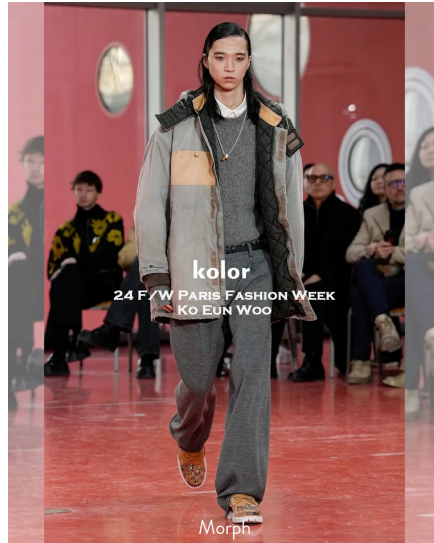
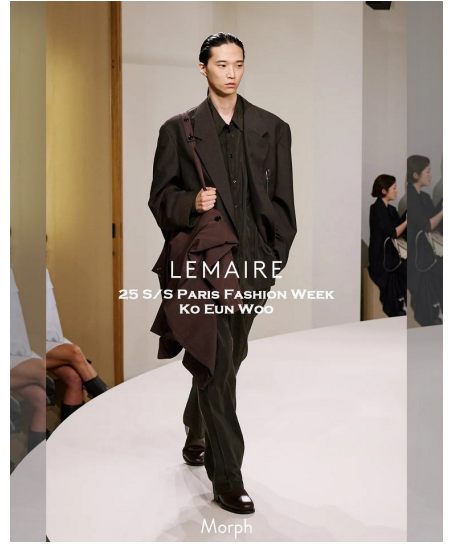
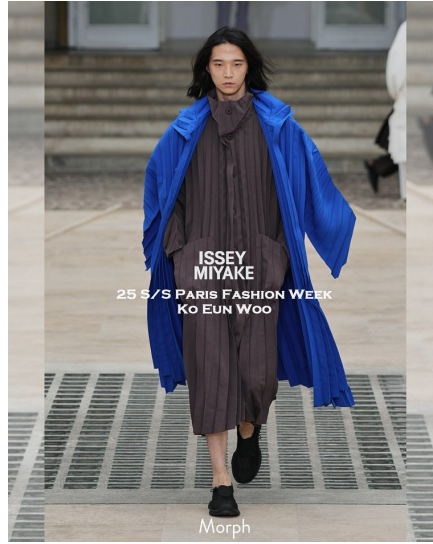


# Morph

Morph Management, 36 Jangmun-ro Yongsan-gu Seoul Korea ZIP 04393 | Phone: +82 2 797 7200



KO EUN WOO (@kewoo\_)

Height 185/6'1" Chest 79/31" Waist 69/27" Hips 87/34.5" Shoe 270mm Hair Black Eyes Brown Born in 2001

# Morph

Morph Management, 36 Jangmun-ro Yongsan-gu Seoul Korea ZIP 04393 | Phone: +82 2 797 7200



HOMME PLISSÉ ISSEY MIYAKE  
2024 S/S PARIS MEN'S FASHION WEEK



KO EUN WOO

HED MAYNER  
2024 S/S PARIS MEN'S FASHION WEEK



KO EUN WOO

ETRO  
2024 S/S MILAN MEN'S FASHION WEEK



KO EUN WOO

FENDI  
2024 S/S MILAN MEN'S FASHION WEEK



KO EUN WOO

CHRISTOPHER RAXXY  
2023 F/W MILAN FASHION WEEK



KO EUN WOO

FENDI  
2023-24 F/W MILAN MENSWEAR SHOW



KO EUN WOO

KO EUN WOO (@kewoo\_)

Height 185/6'1" Chest 79/31" Waist 69/27" Hips 87/34.5" Shoe 270mm Hair Black Eyes Brown Born in 2001

# Morph

Morph Management, 36 Jangmun-ro Yongsan-gu Seoul Korea ZIP 04393 | Phone: +82 2 797 7200



**KO EUN WOO (@kewooo\_)**

Height 185/6'1" Chest 79/31" Waist 69/27" Hips 87/34.5" Shoe 270mm Hair Black Eyes Brown Born in 2001