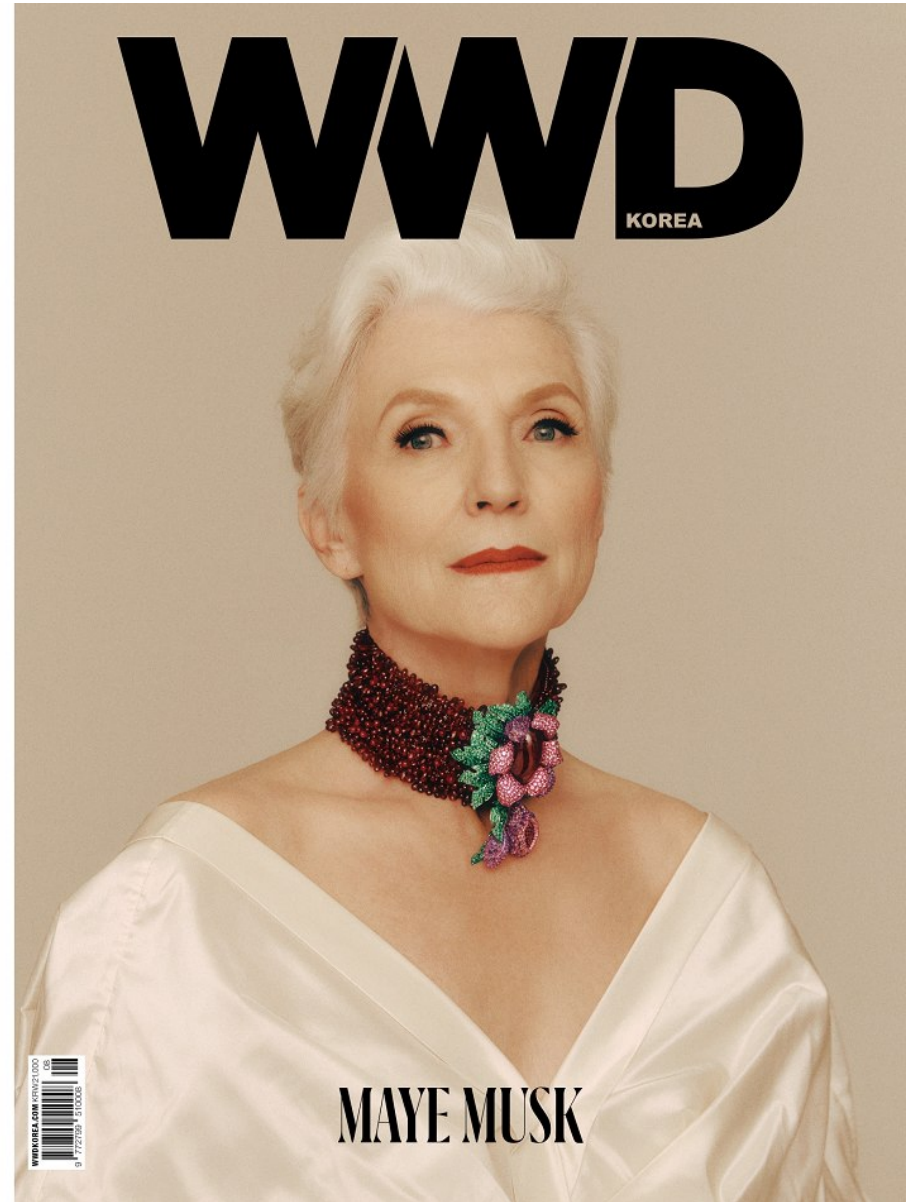


# Morph

Morph Management, 36 Jangmun-ro Yongsan-gu Seoul Korea ZIP 04393 | Phone: +82 2 797 7200



SEONG HEE PARK

Born in 1900

# Morph

Morph Management, 36 Jangmun-ro Yongsan-gu Seoul Korea ZIP 04393 | Phone: +82 2 797 7200



SEONG HEE PARK

Born in 1900

# Morph

Morph Management, 36 Jangmun-ro Yongsan-gu Seoul Korea ZIP 04393 | Phone: +82 2 797 7200



SEONG HEE PARK

Born in 1900

# Morph

Morph Management, 36 Jangmun-ro Yongsan-gu Seoul Korea ZIP 04393 | Phone: +82 2 797 7200



SEONG HEE PARK

Born in 1900

# Morph

Morph Management, 36 Jangmun-ro Yongsan-gu Seoul Korea ZIP 04393 | Phone: +82 2 797 7200



SEONG HEE PARK

Born in 1900

# Morph

Morph Management, 36 Jangmun-ro Yongsan-gu Seoul Korea ZIP 04393 | Phone: +82 2 797 7200



SEONG HEE PARK

Born in 1900

# Morph

Morph Management, 36 Jangmun-ro Yongsan-gu Seoul Korea ZIP 04393 | Phone: +82 2 797 7200



SEONG HEE PARK

Born in 1900

# Morph

Morph Management, 36 Jangmun-ro Yongsan-gu Seoul Korea ZIP 04393 | Phone: +82 2 797 7200



Harper's  
**BAZAAR**  
КРАСОТА



**ТЕАТР КАБУКИ**

Фотос: САРА МАРИ SARA MARI Стиль: КОННИ БЕРГ CONNIE BERG  
Директор проекта: АСЕЛЬ КИРЖИБАЕВА ASSEL KIRZHIBAYEVA

**SEONG HEE PARK**

Born in 1900



# Morph

Morph Management, 36 Jangmun-ro Yongsan-gu Seoul Korea ZIP 04393 | Phone: +82 2 797 7200



SEONG HEE PARK

Born in 1900

# Morph

Morph Management, 36 Jangmun-ro Yongsan-gu Seoul Korea ZIP 04393 | Phone: +82 2 797 7200



28



SEONG HEE PARK

Born in 1900

# Morph

Morph Management, 36 Jangmun-ro Yongsan-gu Seoul Korea ZIP 04393 | Phone: +82 2 797 7200



SEONG HEE PARK

Born in 1900

# Morph

Morph Management, 36 Jangmun-ro Yongsan-gu Seoul Korea ZIP 04393 | Phone: +82 2 797 7200



SEONG HEE PARK

Born in 1900

# Morph

Morph Management, 36 Jangmun-ro Yongsan-gu Seoul Korea ZIP 04393 | Phone: +82 2 797 7200



SEONG HEE PARK

Born in 1900