

# Morph

Morph Management, 36 Jangmun-ro Yongsan-gu Seoul Korea ZIP 04393 | Phone: +82 2 797 7200



PARK SUNG BIN (@1016\_studio)

Born in 1900

# Morph

Morph Management, 36 Jangmun-ro Yongsan-gu Seoul Korea ZIP 04393 | Phone: +82 2 797 7200



**PARK SUNG BIN (@1016\_studio)**

Born in 1900



# Morph

Morph Management, 36 Jangmun-ro Yongsan-gu Seoul Korea ZIP 04393 | Phone: +82 2 797 7200



**2020**  
NEW YEAR'S PARTY

DRESS CODE  
**Sensual Contemporary**

HOST  
**Park\_sungbin**  
@1016\_Studio

2019.12.28 SAT PM 6:00 미포구 포럼로 53-9 층 1016 STUDIO

The darkest night will end.  
And the sun will rise  
가장 어두운 밤도 끝날 것이다.  
그리고 태양은 떠오를 것이다  
-Vincent Van Gogh-

**1016 STUDIO**  
REALISM FASHION DESIGN STUDIO

A fashion sketch of a man in a suit, rendered in blue and white. The suit is detailed with small dots and lines, suggesting a textured or sequined fabric. The head is replaced by a series of horizontal, wavy lines, creating an abstract, ethereal effect. The sketch is set against a white background with a thin black border.

**PARK SUNG BIN (@1016\_studio)**

Born in 1900

# Morph

Morph Management, 36 Jangmun-ro Yongsan-gu Seoul Korea ZIP 04393 | Phone: +82 2 797 7200

NEW YEAR'S PARTY

## 2020

DRESS CODE

Sensual Contemporary

HOST

Park\_sungbin  
© 1016\_Studio



1016 STUDIO  
REALISM FASHION DESIGN STUDIO

The darkest night will end.  
And the sun will rise  
가장 어두운 밤도 끝날것이다.  
그리고 태양은 떠오를 것이다  
-Vincent Van Gogh-

2019.12.28 SAT. PM 6:00 마포구 토정로 53-5 층 1016 STUDIO



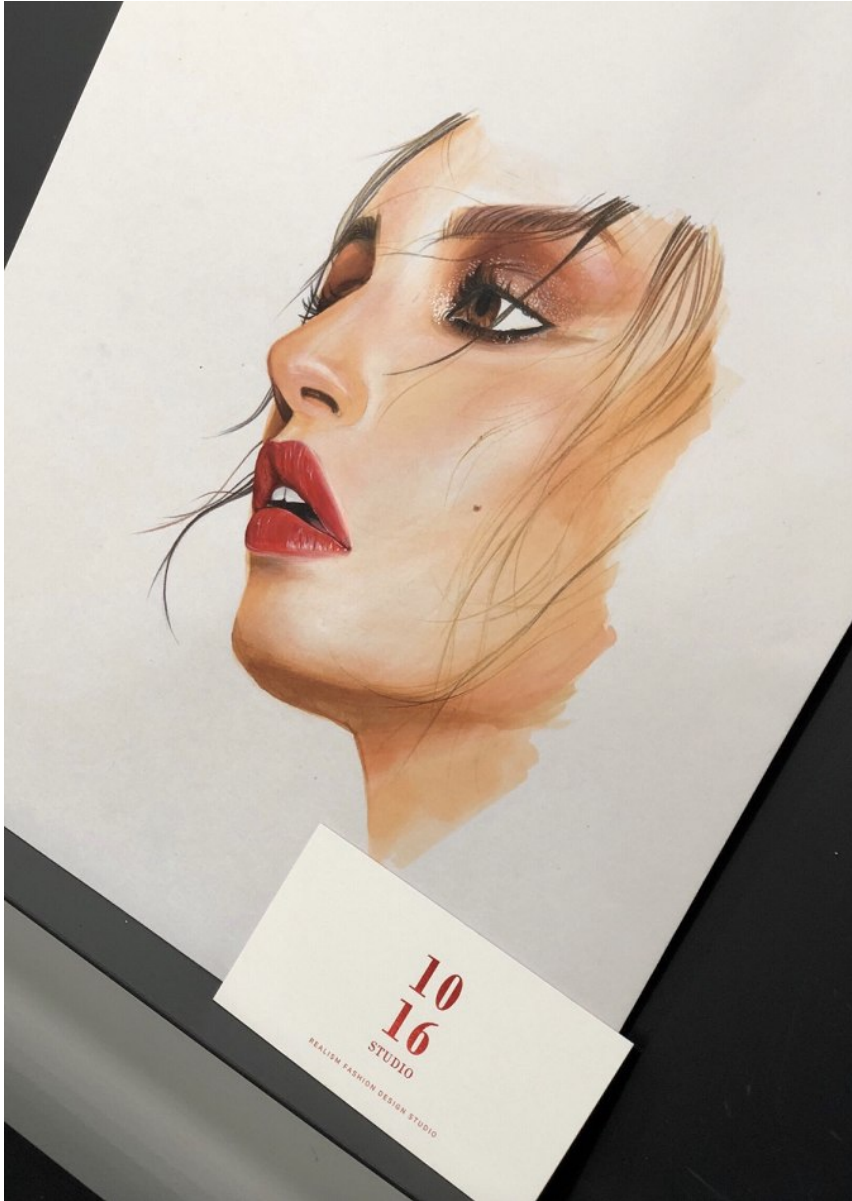
PARK SUNG BIN (@1016\_studio)

Born in 1900



# Morph

Morph Management, 36 Jangmun-ro Yongsan-gu Seoul Korea ZIP 04393 | Phone: +82 2 797 7200



1016  
STUDIO

REALISM FASHION DESIGN STUDIO

PARK SUNG BIN (@1016\_studio)

Born in 1900

# Morph

Morph Management, 36 Jangmun-ro Yongsan-gu Seoul Korea ZIP 04393 | Phone: +82 2 797 7200



PARK SUNG BIN (@1016\_studio)

Born in 1900



# Morph

Morph Management, 36 Jangmun-ro Yongsan-gu Seoul Korea ZIP 04393 | Phone: +82 2 797 7200

1016 STUDIO

REALISM FASHION DESIGN STUDIO



1016 STUDIO

REALISM FASHION DESIGN STUDIO



PARK SUNG BIN (@1016\_studio)

Born in 1900

# Morph

Morph Management, 36 Jangmun-ro Yongsan-gu Seoul Korea ZIP 04393 | Phone: +82 2 797 7200

1016 STUDIO

REALISM FASHION DESIGN STUDIO



PARK SUNG BIN (@1016\_studio)

Born in 1900



# Morph

Morph Management, 36 Jangmun-ro Yongsan-gu Seoul Korea ZIP 04393 | Phone: +82 2 797 7200

1016 STUDIO

REALISM FASHION DESIGN STUDIO



PARK SUNG BIN (@1016\_studio)

Born in 1900