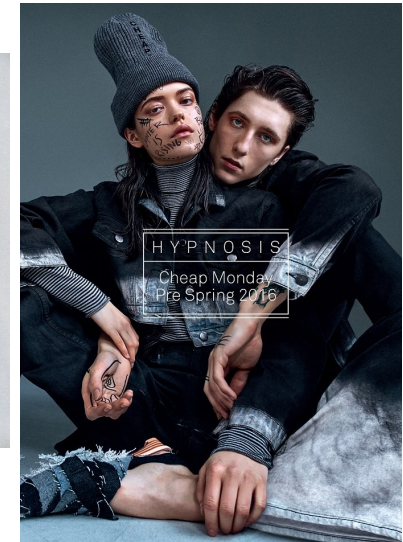
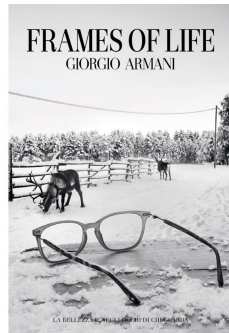
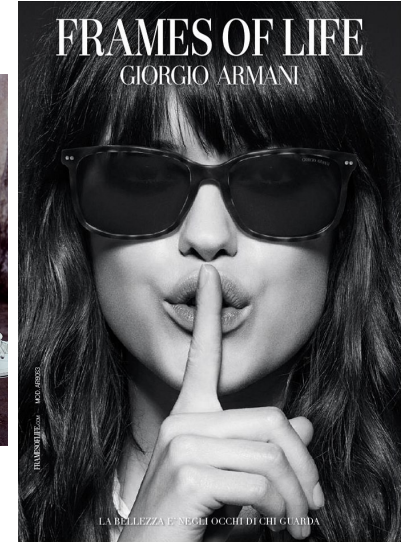
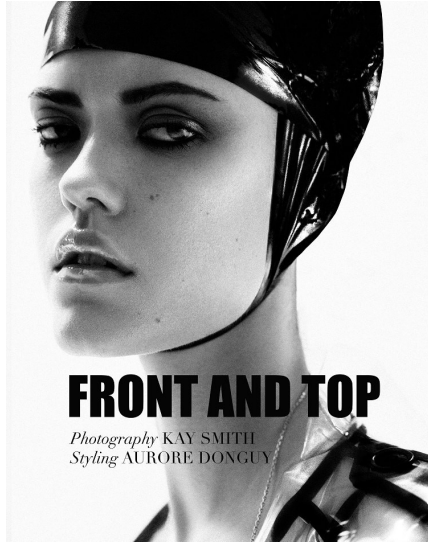


Morph

Morph Management, 36 Jangmun-ro Yongsan-gu Seoul Korea ZIP 04393 | Phone: +82 2 797 7200



ANNA NEVALA (@annajnevala)

Height 176/5'9.5" Bust 80/31.5" Waist 59/23" Hips 88/34.5" Hair Brown Eyes Brown Born in 1900

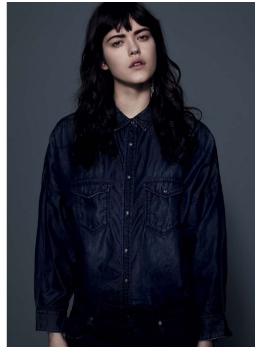
Morph

Morph Management, 36 Jangmun-ro Yongsan-gu Seoul Korea ZIP 04393 | Phone: +82 2 797 7200



DENIM
FALL / WINTER
2013

In terms of denim, Diesel is once again leading the evolutionary process with Denim Motion. Massimo is all about denim close going to also, some exciting sewing techniques to make and the other the material. Thanks to a new press, it had other the denim, a new cutting technique in the garments of fabric, all of Diesel's expertise has been applied to the new evolution of denim.

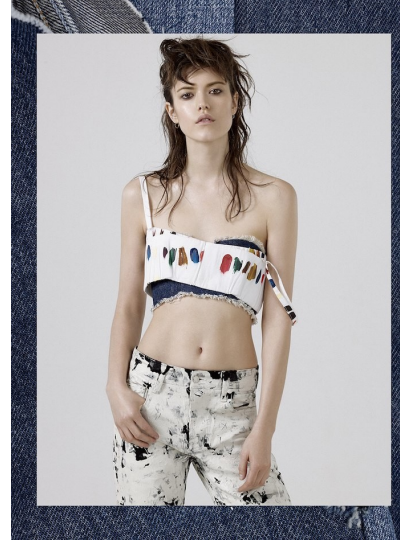


ANNA NEVALA (@annajnevala)

Height 176/5'9.5" Bust 80/31.5" Waist 59/23" Hips 88/34.5" Hair Brown Eyes Brown Born in 1900

Morph

Morph Management, 36 Jangmun-ro Yongsan-gu Seoul Korea ZIP 04393 | Phone: +82 2 797 7200

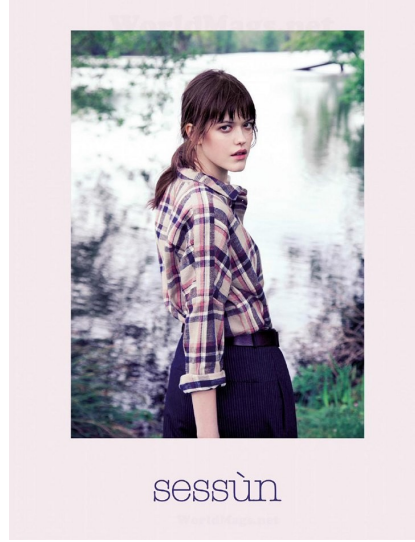


ANNA NEVALA (@annajnevala)

Height 176/5'9.5" Bust 80/31.5" Waist 59/23" Hips 88/34.5" Hair Brown Eyes Brown Born in 1900

Morph

Morph Management, 36 Jangmun-ro Yongsan-gu Seoul Korea ZIP 04393 | Phone: +82 2 797 7200



ANNA NEVALA (@annajnevala)

Height 176/5'9.5" Bust 80/31.5" Waist 59/23" Hips 88/34.5" Hair Brown Eyes Brown Born in 1900

Morph

Morph Management, 36 Jangmun-ro Yongsan-gu Seoul Korea ZIP 04393 | Phone: +82 2 797 7200



ANNA NEVALA (@annajnevala)

Height 176/5'9.5" Bust 80/31.5" Waist 59/23" Hips 88/34.5" Hair Brown Eyes Brown Born in 1900

Morph

Morph Management, 36 Jangmun-ro Yongsan-gu Seoul Korea ZIP 04393 | Phone: +82 2 797 7200



ANNA NEVALA (@annajnevala)

Height 176/5'9.5" Bust 80/31.5" Waist 59/23" Hips 88/34.5" Hair Brown Eyes Brown Born in 1900