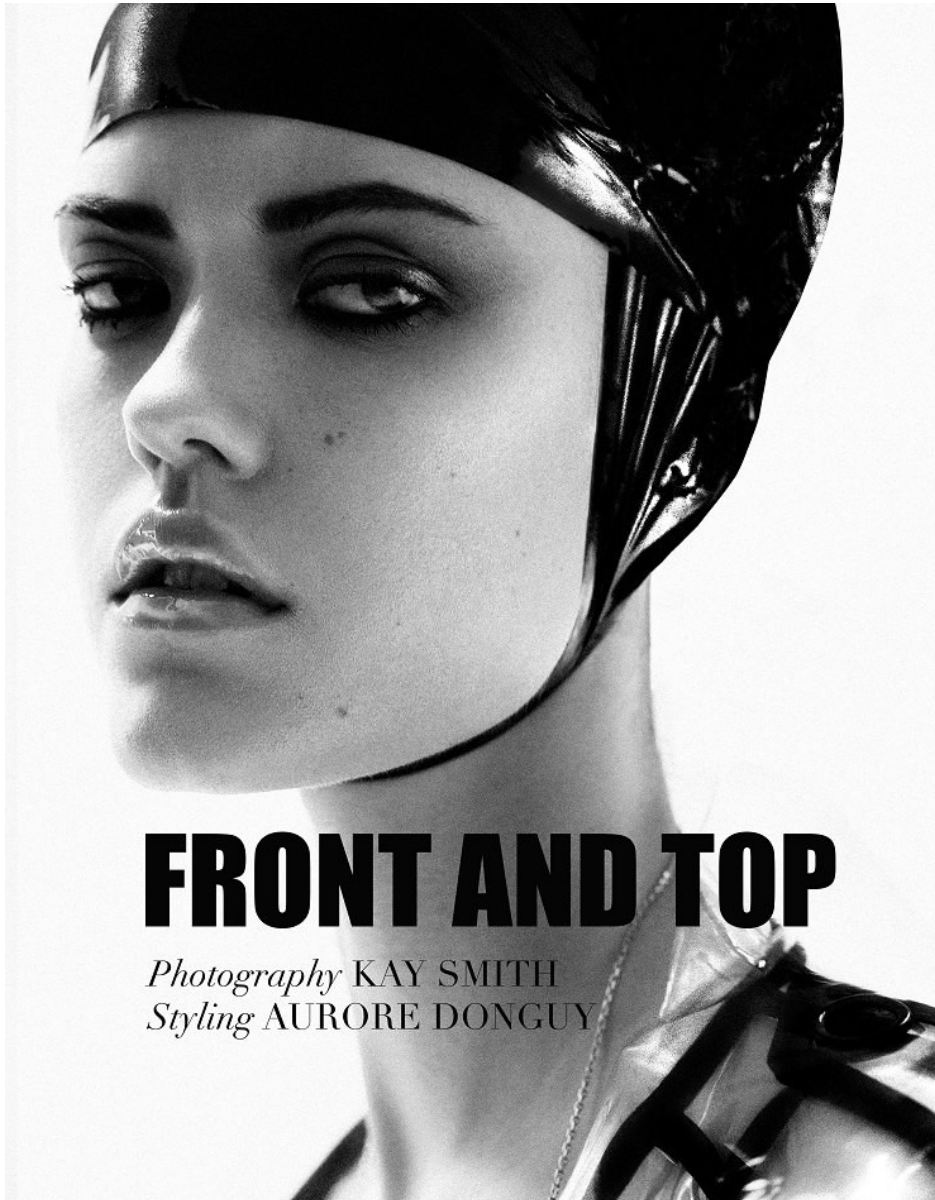


Morph

Morph Management, 36 Jangmun-ro Yongsan-gu Seoul Korea ZIP 04393 | Phone: +82 2 797 7200



ANNA NEVALA (@annajnevala)

Height 176/5'9.5" Bust 80/31.5" Waist 59/23" Hips 88/34.5" Hair Brown Eyes Brown Born in 1900

Morph

Morph Management, 36 Jangmun-ro Yongsan-gu Seoul Korea ZIP 04393 | Phone: +82 2 797 7200

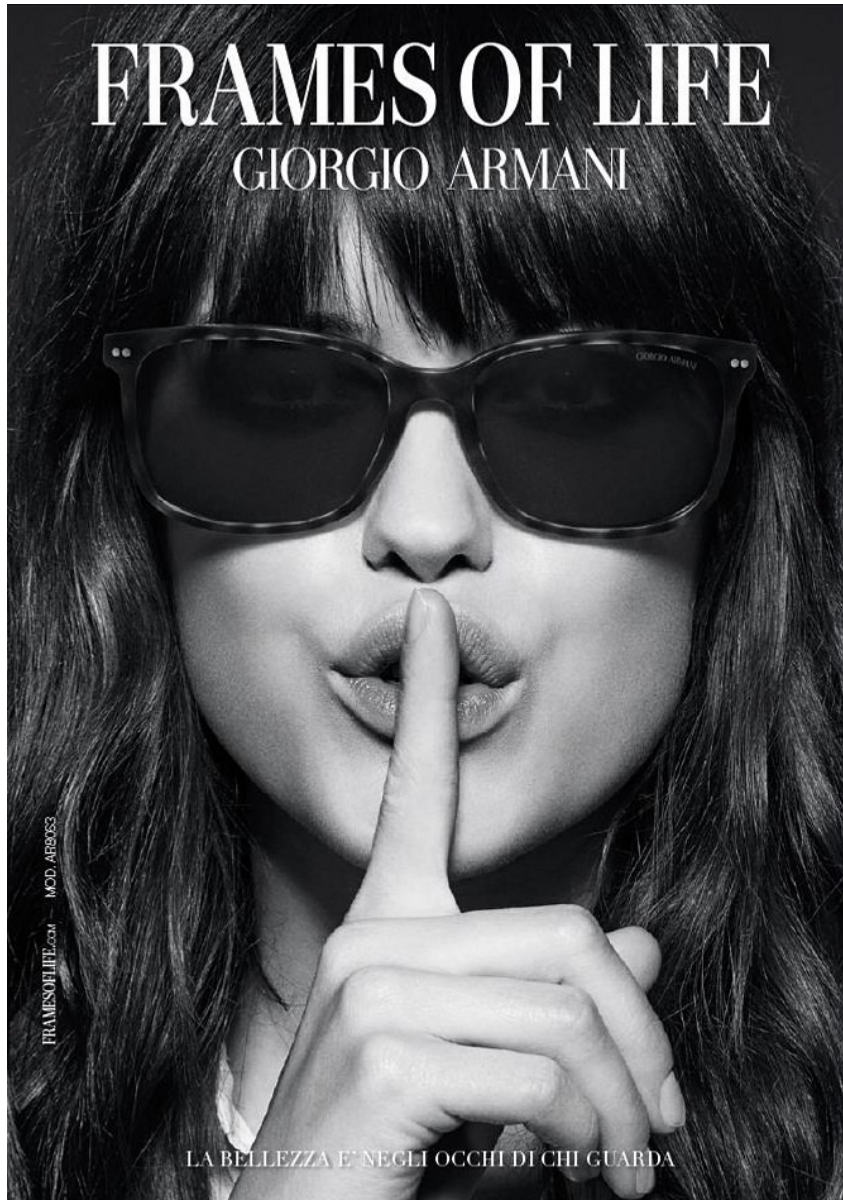


ANNA NEVALA (@annajnevala)

Height 176/5'9.5" Bust 80/31.5" Waist 59/23" Hips 88/34.5" Hair Brown Eyes Brown Born in 1900

Morph

Morph Management, 36 Jangmun-ro Yongsan-gu Seoul Korea ZIP 04393 | Phone: +82 2 797 7200

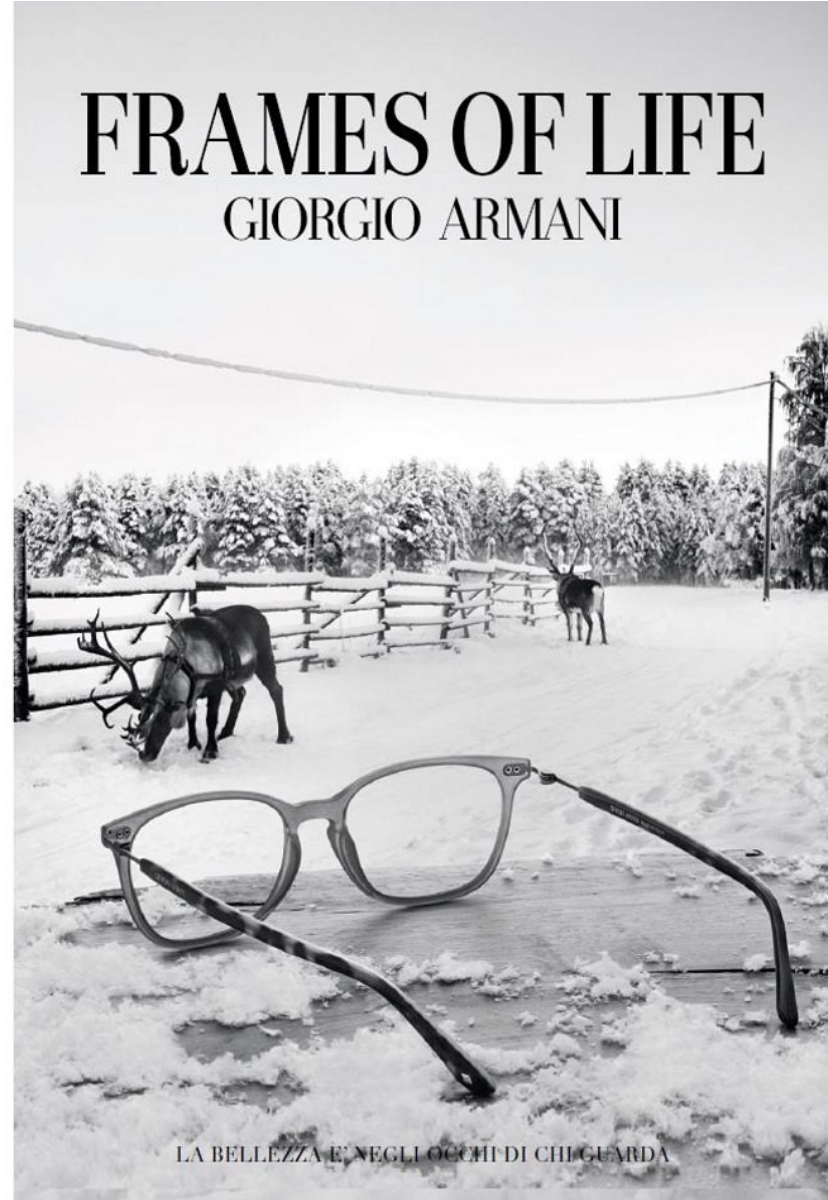


ANNA NEVALA (@annajnevala)

Height 176/5'9.5" Bust 80/31.5" Waist 59/23" Hips 88/34.5" Hair Brown Eyes Brown Born in 1900

Morph

Morph Management, 36 Jangmun-ro Yongsan-gu Seoul Korea ZIP 04393 | Phone: +82 2 797 7200



ANNA NEVALA (@annajnevala)

Height 176/5'9.5" Bust 80/31.5" Waist 59/23" Hips 88/34.5" Hair Brown Eyes Brown Born in 1900

Morph

Morph Management, 36 Jangmun-ro Yongsan-gu Seoul Korea ZIP 04393 | Phone: +82 2 797 7200



ANNA NEVALA (@annajnevala)

Height 176/5'9.5" Bust 80/31.5" Waist 59/23" Hips 88/34.5" Hair Brown Eyes Brown Born in 1900

Morph

Morph Management, 36 Jangmun-ro Yongsan-gu Seoul Korea ZIP 04393 | Phone: +82 2 797 7200



ANNA NEVALA (@annajnevala)

Height 176/5'9.5" Bust 80/31.5" Waist 59/23" Hips 88/34.5" Hair Brown Eyes Brown Born in 1900

Morph

Morph Management, 36 Jangmun-ro Yongsan-gu Seoul Korea ZIP 04393 | Phone: +82 2 797 7200



ANNA NEVALA (@annajnevala)

Height 176/5'9.5" Bust 80/31.5" Waist 59/23" Hips 88/34.5" Hair Brown Eyes Brown Born in 1900

Morph

Morph Management, 36 Jangmun-ro Yongsan-gu Seoul Korea ZIP 04393 | Phone: +82 2 797 7200



ANNA NEVALA (@annajnevala)

Height 176/5'9.5" Bust 80/31.5" Waist 59/23" Hips 88/34.5" Hair Brown Eyes Brown Born in 1900

Morph

Morph Management, 36 Jangmun-ro Yongsan-gu Seoul Korea ZIP 04393 | Phone: +82 2 797 7200



ANNA NEVALA (@annajnevala)

Height 176/5'9.5" Bust 80/31.5" Waist 59/23" Hips 88/34.5" Hair Brown Eyes Brown Born in 1900

Morph

Morph Management, 36 Jangmun-ro Yongsan-gu Seoul Korea ZIP 04393 | Phone: +82 2 797 7200

Muoti

Uusi tyyli,
uusi siinä!



Pienet mutta niin tärkeät

Ostan uudet bikinit joka vuosi. Se tarkoittaa, että kesä on virallisesti avattu. Tänä vuonna kokeilen eläin-kuoseja, tai paljastan vain kyljet kokouiskarissa. Biitsiltä suunnataan suoraan juhlimaan, ja sehän sopii, koska kesän viilein bilelook paljastaa navan.

KUVA: SAMULI KARALA

käännä



Läpikuultava
valkoraideellinen
paita 123 e, Malson
Scotch. Sininen
bikini yläosa,
jossa punaisia
pallioja 28 e, Helly
Hansen. Kultainen
rannakorju 139 e,
Kalevala Koru.
Kultainen
kaulakorju, jossa
kristalleja 179 e,
loikka Farkkukama
89 e, Diesel.

HIT THE POOL

Parhaissa bikineissä haluat hengata koko päivän.

KAWA H POUR Kuvast: SAMULI KARALA

66 COSMOPOLITAN TOUKOKUU 2014

ANNA NEVALA (@annajnevala)

Height 176/5'9.5" Bust 80/31.5" Waist 59/23" Hips 88/34.5" Hair Brown Eyes Brown Born in 1900

Morph

Morph Management, 36 Jangmun-ro Yongsan-gu Seoul Korea ZIP 04393 | Phone: +82 2 797 7200



ANNA NEVALA (@annajnevala)

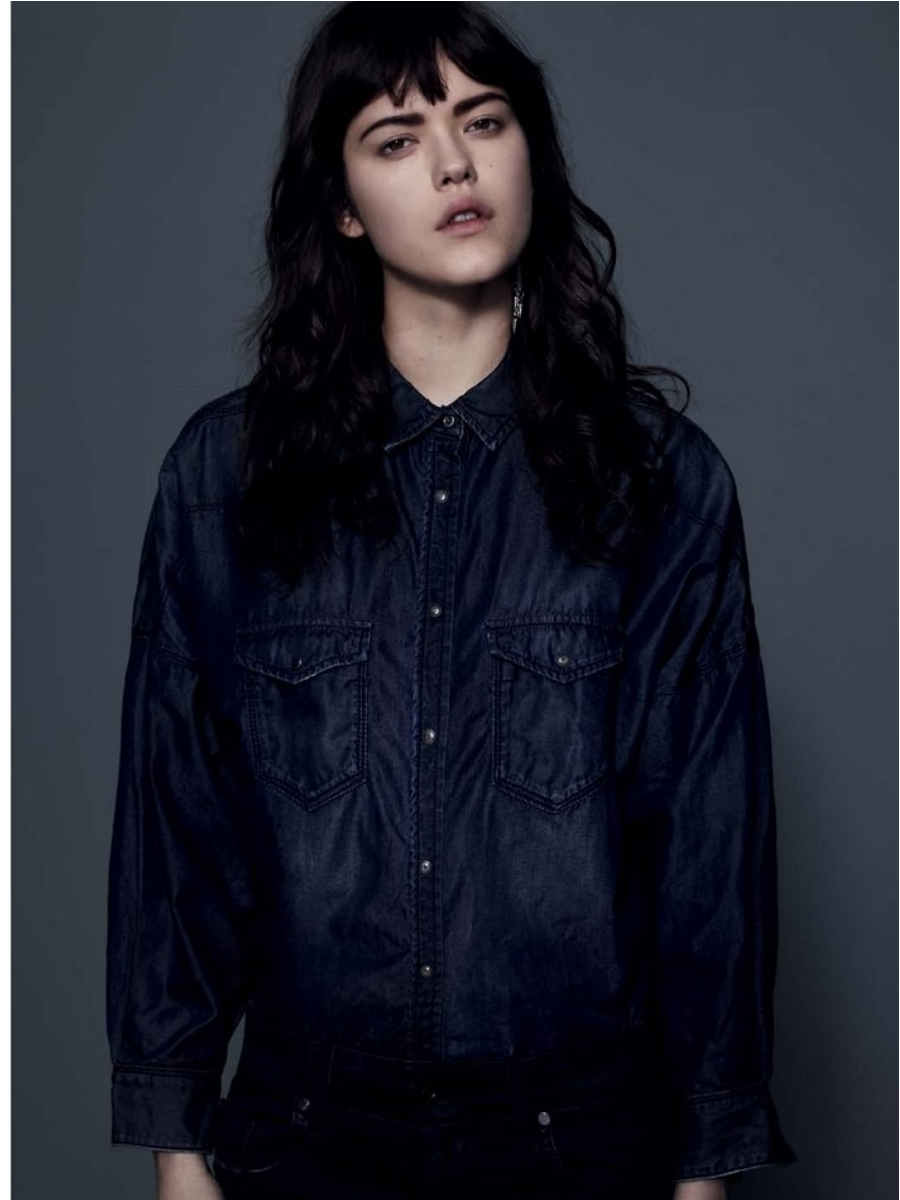
Height 176/5'9.5" Bust 80/31.5" Waist 59/23" Hips 88/34.5" Hair Brown Eyes Brown Born in 1900

Morph

Morph Management, 36 Jangmun-ro Yongsan-gu Seoul Korea ZIP 04393 | Phone: +82 2 797 7200

DENIM
FALL / WINTER
2013

In terms of denim, Diesel is once again leading the evolutionary process with Denim Mutation. Mutation is all about denim changing its skin, using multiple layering technologies to colour and de-colour the material. Whether it's a laser print, a faded colour treatment, a new coating technique or a new generation of fabrics, all of Diesel's expertise has been applied to this new evolution of denim.



ANNA NEVALA (@annajnevala)

Height 176/5'9.5" Bust 80/31.5" Waist 59/23" Hips 88/34.5" Hair Brown Eyes Brown Born in 1900

Morph

Morph Management, 36 Jangmun-ro Yongsan-gu Seoul Korea ZIP 04393 | Phone: +82 2 797 7200



ANNA NEVALA (@annajnevala)

Height 176/5'9.5" Bust 80/31.5" Waist 59/23" Hips 88/34.5" Hair Brown Eyes Brown Born in 1900

Morph

Morph Management, 36 Jangmun-ro Yongsan-gu Seoul Korea ZIP 04393 | Phone: +82 2 797 7200



rave party

Si sta in giro tutta la notte, e magari anche il giorno dopo. Come ci si veste? Niente di più facile: pantaloni della tuta o da sci, leggings stampati o calzamaglia. Sopra, una felpa con le scritte, un giubbotto imbottito, un top da palestra. Nessuno fa caso allo stile, per questo è il massimo dello stile

di Haria Norsa - foto Laurence Ellis

ANNA NEVALA (@annajnevala)

Height 176/5'9.5" Bust 80/31.5" Waist 59/23" Hips 88/34.5" Hair Brown Eyes Brown Born in 1900

Morph

Morph Management, 36 Jangmun-ro Yongsan-gu Seoul Korea ZIP 04393 | Phone: +82 2 797 7200



Collerette en soie, Lionel Giroud Garampon, psd. Veste en flanelle, 700 €. pantalon en Néoprène, 380 €, sandales en cuir, 470 €, le tout Emporio Armani.



Collerette en soie, Lionel Giroud Garampon, psd. Gilet en coton et viscose, Acoté, 129 €. Jupe en coton, Club Menaco, 175 €. Cycliste en dentelle, Intimissimi, env. 28 €. Chaussettes en coton, Falke, env. 7 €. Boots en cuir, Stella Luna pour Anthony Vaccarello, psd.

ANNA NEVALA (@annajnevala)

Height 176/5'9.5" Bust 80/31.5" Waist 59/23" Hips 88/34.5" Hair Brown Eyes Brown Born in 1900

Morph

Morph Management, 36 Jangmun-ro Yongsan-gu Seoul Korea ZIP 04393 | Phone: +82 2 797 7200



Veste en cuir brodée de sequins, Louis Vuitton, psd. Top en coton, Coperni Femme, psd. Jean en denim customisé, Pepe Jeans by Crystal Fighters pour les 40 ans de Pepe Jeans, psd.



Par Stéphanie BRISSAY
Photos Estelle RANCUREL

Chemise en coton, Alain Figaret. Corset en suède et cuir, Alaïa. Bague portée en camé «Camélia Galbé», en or blanc sertie d'un diamant et céramique, Chanel Joaillerie. A sa main droite: manchette en or gris et diamants, collection «Emprise», Louis Vuitton. Montre «Emprise» en acier, sertie de diamants, cadran opalin, bracet en veau, Louis Vuitton Horlogerie. Bague «Entre les doigts cosmos» en or blanc et diamants, Van Cleef & Arpels. A sa main gauche: Bagues multi-anneau en or blanc et diamants, O'fée.

ANNA NEVALA (@annajnevala)

Height 176/5'9.5" Bust 80/31.5" Waist 59/23" Hips 88/34.5" Hair Brown Eyes Brown Born in 1900

Morph

Morph Management, 36 Jangmun-ro Yongsan-gu Seoul Korea ZIP 04393 | Phone: +82 2 797 7200



Chemise en coton,
Saint Laurent
par **Hedi Slimane**.
Robe-bustier en
coton, **Dsquared²**.
Boucles d'oreilles
en or blanc et
diamants, **Dior**
Joaillerie.
Collier «Force 10»
en or blanc et
diamants, **Fred**.
À sa main droite:
bague «Pain de
sucre» en or gris
et diamants, **Fred**.
À sa main gauche:
montre «Force 10»
en acier, nacre et
diamants, bracelet
en corderie, **Fred**.
Bague multi-
anneau en or blanc
et diamants, **O'fée**.
Bague «Menottes»
en or blanc
et diamants,
Dinh Van.

Maquillage Chanel
par Alexandra
Schiavi avec Teint
Les Beiges n°20,
le Blush Crème de
Chanel Intonation,
sur les yeux
Écriture de Chanel
Noir, Mascara
Inimitable Noir,
Crayon Sourcils
Brun Naturel, sur
les lèvres Rouge
Coco Shine Mutine.

“PORTEZ
UNE TIARE AU
PETIT DÉJEUNER
ET LA
JOURNÉE SERA
BEAUCOUP PLUS
LUMINEUSE”

MARGHERITA MISSONI
à GRAZIA le 23 avril



This page: Trousers, Dbls1050, Bra top, Dbls2760, Bag, Dbls21000 all by Louis Vuitton

ANNA NEVALA (@annajnevala)

Height 176/5'9.5" Bust 80/31.5" Waist 59/23" Hips 88/34.5" Hair Brown Eyes Brown Born in 1900

Morph

Morph Management, 36 Jangmun-ro Yongsan-gu Seoul Korea ZIP 04393 | Phone: +82 2 797 7200



This page Earring (large) Dls3,600, Earring (small) Dls975, Brooch Dls2,900 all by Louis Vuitton



ANNA NEVALA (@annajnevala)

Height 176/5'9.5" Bust 80/31.5" Waist 59/23" Hips 88/34.5" Hair Brown Eyes Brown Born in 1900

Morph

Morph Management, 36 Jangmun-ro Yongsan-gu Seoul Korea ZIP 04393 | Phone: +82 2 797 7200

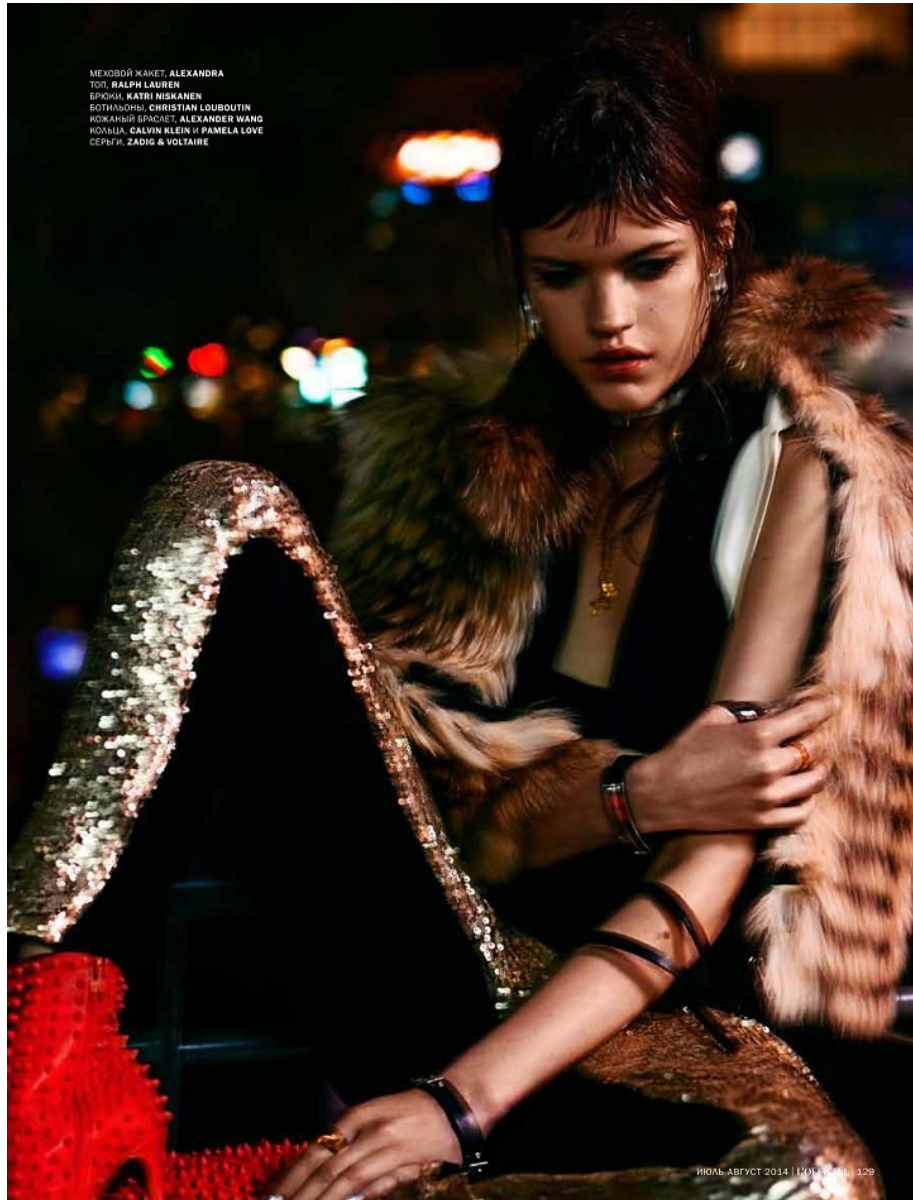


ANNA NEVALA (@annajnevala)

Height 176/5'9.5" Bust 80/31.5" Waist 59/23" Hips 88/34.5" Hair Brown Eyes Brown Born in 1900

Morph

Morph Management, 36 Jangmun-ro Yongsan-gu Seoul Korea ZIP 04393 | Phone: +82 2 797 7200



ANNA NEVALA (@annajnevala)

Height 176/5'9.5" Bust 80/31.5" Waist 59/23" Hips 88/34.5" Hair Brown Eyes Brown Born in 1900

Morph

Morph Management, 36 Jangmun-ro Yongsan-gu Seoul Korea ZIP 04393 | Phone: +82 2 797 7200



Pink lace bodysuit with sleeves by Fifi Chachnill
Pink maribou heels by Fifi Chachnill
Flower ring by Chelsea Taylor
Daisy sunglasses by Mercura NYC

ANNA NEVALA (@annajnevala)

Height 176/5'9.5" Bust 80/31.5" Waist 59/23" Hips 88/34.5" Hair Brown Eyes Brown Born in 1900

Morph

Morph Management, 36 Jangmun-ro Yongsan-gu Seoul Korea ZIP 04393 | Phone: +82 2 797 7200



ANNA NEVALA (@annajnevala)

Height 176/5'9.5" Bust 80/31.5" Waist 59/23" Hips 88/34.5" Hair Brown Eyes Brown Born in 1900

Morph

Morph Management, 36 Jangmun-ro Yongsan-gu Seoul Korea ZIP 04393 | Phone: +82 2 797 7200



ANNA NEVALA (@annajnevala)

Height 176/5'9.5" Bust 80/31.5" Waist 59/23" Hips 88/34.5" Hair Brown Eyes Brown Born in 1900

Morph

Morph Management, 36 Jangmun-ro Yongsan-gu Seoul Korea ZIP 04393 | Phone: +82 2 797 7200



ANNA NEVALA (@annajnevala)

Height 176/5'9.5" Bust 80/31.5" Waist 59/23" Hips 88/34.5" Hair Brown Eyes Brown Born in 1900

Morph

Morph Management, 36 Jangmun-ro Yongsan-gu Seoul Korea ZIP 04393 | Phone: +82 2 797 7200



sessùn

WANTAGENTS



Top, £295, Teatum Jones (teatumjones.com); dress, £4,800, Jason Wu (jasonwustudio.com); apron, £615, Phoebe English (doverstreetmarket.com); net dress (underneath), £265, Hofmann Copenhagen (hofmann copenhagen.com); choker, £560, and gold plated bronze double carnivore ring, £180, both Annelise Michelson (annelisemichelson.com); MFP ring, £120 and double band rings in gold, rose gold and silver, £78 each, all Maria Francesca Pepe (mfpepe.com); shoes, £575, Jimmy Choo (jimmychoo.com)

ANNA NEVALA (@annajnevala)

Height 176/5'9.5" Bust 80/31.5" Waist 59/23" Hips 88/34.5" Hair Brown Eyes Brown Born in 1900

Morph

Morph Management, 36 Jangmun-ro Yongsan-gu Seoul Korea ZIP 04393 | Phone: +82 2 797 7200



ANNA NEVALA (@annajnevala)

Height 176/5'9.5" Bust 80/31.5" Waist 59/23" Hips 88/34.5" Hair Brown Eyes Brown Born in 1900

Morph

Morph Management, 36 Jangmun-ro Yongsan-gu Seoul Korea ZIP 04393 | Phone: +82 2 797 7200



ANNA NEVALA (@annajnevala)

Height 176/5'9.5" Bust 80/31.5" Waist 59/23" Hips 88/34.5" Hair Brown Eyes Brown Born in 1900

Morph

Morph Management, 36 Jangmun-ro Yongsan-gu Seoul Korea ZIP 04393 | Phone: +82 2 797 7200



ANNA NEVALA (@annajnevala)

Height 176/5'9.5" Bust 80/31.5" Waist 59/23" Hips 88/34.5" Hair Brown Eyes Brown Born in 1900

Morph

Morph Management, 36 Jangmun-ro Yongsan-gu Seoul Korea ZIP 04393 | Phone: +82 2 797 7200



ANNA NEVALA (@annajnevala)

Height 176/5'9.5" Bust 80/31.5" Waist 59/23" Hips 88/34.5" Hair Brown Eyes Brown Born in 1900

Morph

Morph Management, 36 Jangmun-ro Yongsan-gu Seoul Korea ZIP 04393 | Phone: +82 2 797 7200



ANNA NEVALA (@annajnevala)

Height 176/5'9.5" Bust 80/31.5" Waist 59/23" Hips 88/34.5" Hair Brown Eyes Brown Born in 1900

Morph

Morph Management, 36 Jangmun-ro Yongsan-gu Seoul Korea ZIP 04393 | Phone: +82 2 797 7200



ANNA NEVALA (@annajnevala)

Height 176/5'9.5" Bust 80/31.5" Waist 59/23" Hips 88/34.5" Hair Brown Eyes Brown Born in 1900

Morph

Morph Management, 36 Jangmun-ro Yongsan-gu Seoul Korea ZIP 04393 | Phone: +82 2 797 7200

HERBSTMODE



ANNA NEVALA (@annajnevala)

Height 176/5'9.5" Bust 80/31.5" Waist 59/23" Hips 88/34.5" Hair Brown Eyes Brown Born in 1900

Morph

Morph Management, 36 Jangmun-ro Yongsan-gu Seoul Korea ZIP 04393 | Phone: +82 2 797 7200

HERBSTMODE



ANNA NEVALA (@annajnevala)

Height 176/5'9.5" Bust 80/31.5" Waist 59/23" Hips 88/34.5" Hair Brown Eyes Brown Born in 1900

Morph

Morph Management, 36 Jangmun-ro Yongsan-gu Seoul Korea ZIP 04393 | Phone: +82 2 797 7200



ANNA NEVALA (@annajnevala)

Height 176/5'9.5" Bust 80/31.5" Waist 59/23" Hips 88/34.5" Hair Brown Eyes Brown Born in 1900

Morph

Morph Management, 36 Jangmun-ro Yongsan-gu Seoul Korea ZIP 04393 | Phone: +82 2 797 7200



ANNA NEVALA (@annajnevala)

Height 176/5'9.5" Bust 80/31.5" Waist 59/23" Hips 88/34.5" Hair Brown Eyes Brown Born in 1900