

Morph

Morph Management, 36 Jangmun-ro Yongsan-gu Seoul Korea ZIP 04393 | Phone: +82 2 797 7200



NASTYA GUSEVA

Height 180/5'11" Bust 82/32.5" Waist 60/23.5" Hips 90/35.5" Hair Dark Blonde Eyes Brown Born in 1995

Morph

Morph Management, 36 Jangmun-ro Yongsan-gu Seoul Korea ZIP 04393 | Phone: +82 2 797 7200



NASTYA GUSEVA

Height 180/5'11" Bust 82/32.5" Waist 60/23.5" Hips 90/35.5" Hair Dark Blonde Eyes Brown Born in 1995

Morph

Morph Management, 36 Jangmun-ro Yongsan-gu Seoul Korea ZIP 04393 | Phone: +82 2 797 7200

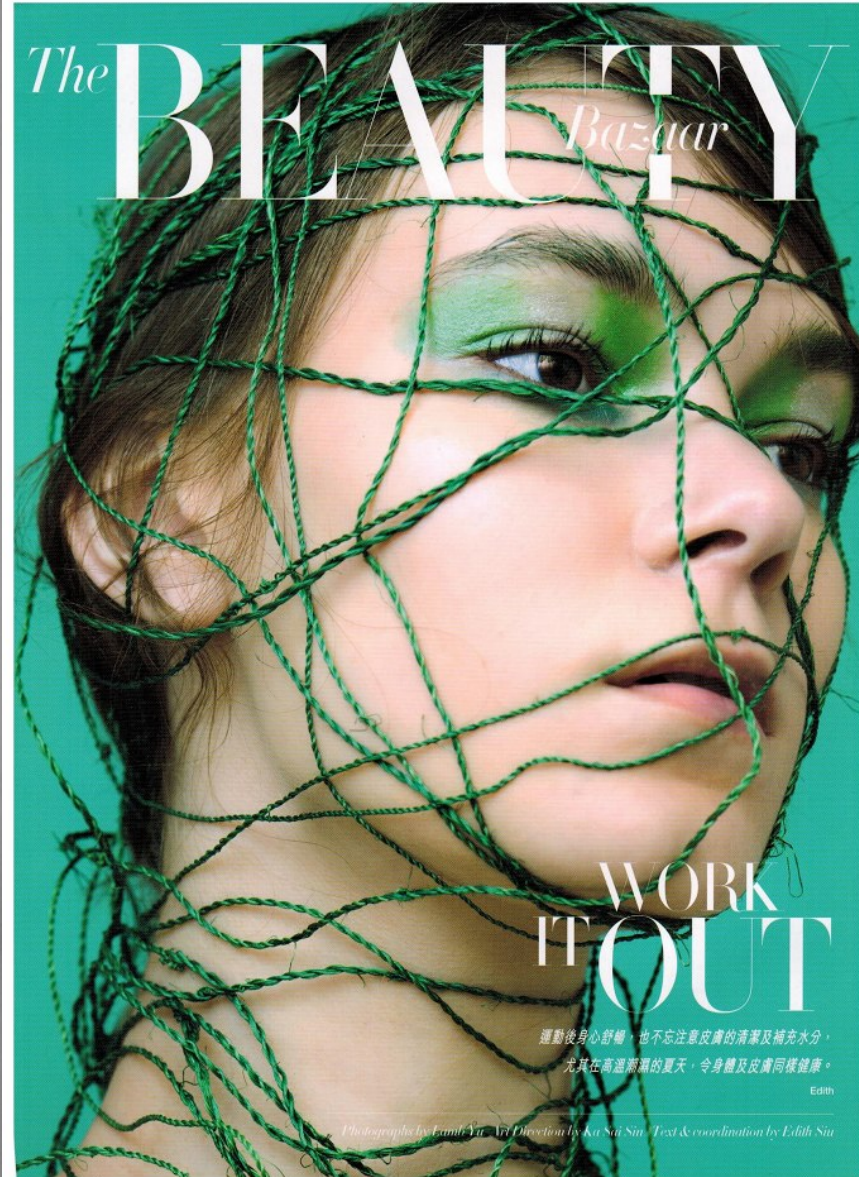


NASTYA GUSEVA

Height 180/5'11" Bust 82/32.5" Waist 60/23.5" Hips 90/35.5" Hair Dark Blonde Eyes Brown Born in 1995

Morph

Morph Management, 36 Jangmun-ro Yongsan-gu Seoul Korea ZIP 04393 | Phone: +82 2 797 7200



NASTYA GUSEVA

Height 180/5'11" Bust 82/32.5" Waist 60/23.5" Hips 90/35.5" Hair Dark Blonde Eyes Brown Born in 1995

Morph

Morph Management, 36 Jangmun-ro Yongsan-gu Seoul Korea ZIP 04393 | Phone: +82 2 797 7200



NASTYA GUSEVA

Height 180/5'11" Bust 82/32.5" Waist 60/23.5" Hips 90/35.5" Hair Dark Blonde Eyes Brown Born in 1995

Morph

Morph Management, 36 Jangmun-ro Yongsan-gu Seoul Korea ZIP 04393 | Phone: +82 2 797 7200



NASTYA GUSEVA

Height 180/5'11" Bust 82/32.5" Waist 60/23.5" Hips 90/35.5" Hair Dark Blonde Eyes Brown Born in 1995

Morph

Morph Management, 36 Jangmun-ro Yongsan-gu Seoul Korea ZIP 04393 | Phone: +82 2 797 7200



NASTYA GUSEVA

Height 180/5'11" Bust 82/32.5" Waist 60/23.5" Hips 90/35.5" Hair Dark Blonde Eyes Brown Born in 1995

Morph

Morph Management, 36 Jangmun-ro Yongsan-gu Seoul Korea ZIP 04393 | Phone: +82 2 797 7200



NASTYA GUSEVA

Height 180/5'11" Bust 82/32.5" Waist 60/23.5" Hips 90/35.5" Hair Dark Blonde Eyes Brown Born in 1995

Morph

Morph Management, 36 Jangmun-ro Yongsan-gu Seoul Korea ZIP 04393 | Phone: +82 2 797 7200



NASTYA GUSEVA

Height 180/5'11" Bust 82/32.5" Waist 60/23.5" Hips 90/35.5" Hair Dark Blonde Eyes Brown Born in 1995

Morph

Morph Management, 36 Jangmun-ro Yongsan-gu Seoul Korea ZIP 04393 | Phone: +82 2 797 7200

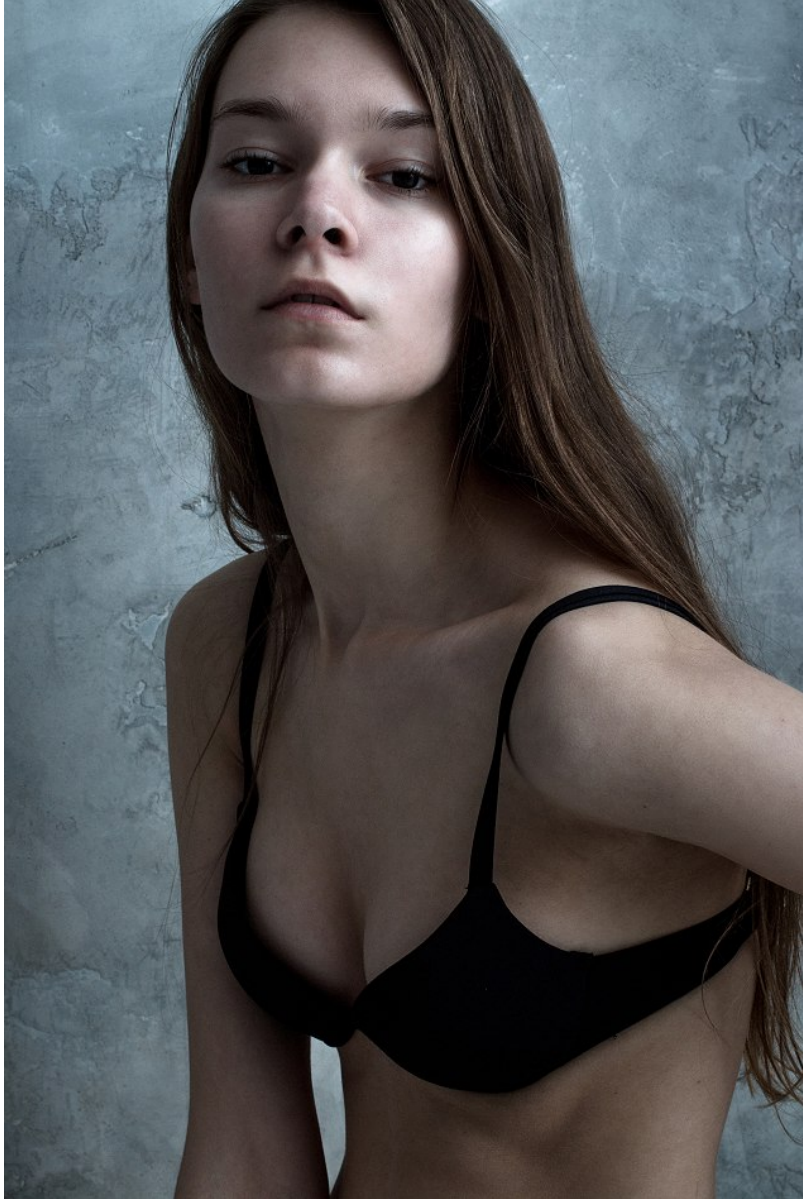


NASTYA GUSEVA

Height 180/5'11" Bust 82/32.5" Waist 60/23.5" Hips 90/35.5" Hair Dark Blonde Eyes Brown Born in 1995

Morph

Morph Management, 36 Jangmun-ro Yongsan-gu Seoul Korea ZIP 04393 | Phone: +82 2 797 7200



NASTYA GUSEVA

Height 180/5'11" Bust 82/32.5" Waist 60/23.5" Hips 90/35.5" Hair Dark Blonde Eyes Brown Born in 1995

Morph

Morph Management, 36 Jangmun-ro Yongsan-gu Seoul Korea ZIP 04393 | Phone: +82 2 797 7200



NASTYA GUSEVA

Height 180/5'11" Bust 82/32.5" Waist 60/23.5" Hips 90/35.5" Hair Dark Blonde Eyes Brown Born in 1995

Morph

Morph Management, 36 Jangmun-ro Yongsan-gu Seoul Korea ZIP 04393 | Phone: +82 2 797 7200



NASTYA GUSEVA

Height 180/5'11" Bust 82/32.5" Waist 60/23.5" Hips 90/35.5" Hair Dark Blonde Eyes Brown Born in 1995

Morph

Morph Management, 36 Jangmun-ro Yongsan-gu Seoul Korea ZIP 04393 | Phone: +82 2 797 7200



NASTYA GUSEVA

Height 180/5'11" Bust 82/32.5" Waist 60/23.5" Hips 90/35.5" Hair Dark Blonde Eyes Brown Born in 1995

Morph

Morph Management, 36 Jangmun-ro Yongsan-gu Seoul Korea ZIP 04393 | Phone: +82 2 797 7200



NASTYA GUSEVA

Height 180/5'11" Bust 82/32.5" Waist 60/23.5" Hips 90/35.5" Hair Dark Blonde Eyes Brown Born in 1995

Morph

Morph Management, 36 Jangmun-ro Yongsan-gu Seoul Korea ZIP 04393 | Phone: +82 2 797 7200



NASTYA GUSEVA

Height 180/5'11" Bust 82/32.5" Waist 60/23.5" Hips 90/35.5" Hair Dark Blonde Eyes Brown Born in 1995

Morph

Morph Management, 36 Jangmun-ro Yongsan-gu Seoul Korea ZIP 04393 | Phone: +82 2 797 7200



NASTYA GUSEVA

Height 180/5'11" Bust 82/32.5" Waist 60/23.5" Hips 90/35.5" Hair Dark Blonde Eyes Brown Born in 1995

Morph

Morph Management, 36 Jangmun-ro Yongsan-gu Seoul Korea ZIP 04393 | Phone: +82 2 797 7200



NASTYA GUSEVA

Height 180/5'11" Bust 82/32.5" Waist 60/23.5" Hips 90/35.5" Hair Dark Blonde Eyes Brown Born in 1995

Morph

Morph Management, 36 Jangmun-ro Yongsan-gu Seoul Korea ZIP 04393 | Phone: +82 2 797 7200



NASTYA GUSEVA

Height 180/5'11" Bust 82/32.5" Waist 60/23.5" Hips 90/35.5" Hair Dark Blonde Eyes Brown Born in 1995

Morph

Morph Management, 36 Jangmun-ro Yongsan-gu Seoul Korea ZIP 04393 | Phone: +82 2 797 7200



NASTYA GUSEVA

Height 180/5'11" Bust 82/32.5" Waist 60/23.5" Hips 90/35.5" Hair Dark Blonde Eyes Brown Born in 1995

Morph

Morph Management, 36 Jangmun-ro Yongsan-gu Seoul Korea ZIP 04393 | Phone: +82 2 797 7200



NASTYA GUSEVA

Height 180/5'11" Bust 82/32.5" Waist 60/23.5" Hips 90/35.5" Hair Dark Blonde Eyes Brown Born in 1995

Morph

Morph Management, 36 Jangmun-ro Yongsan-gu Seoul Korea ZIP 04393 | Phone: +82 2 797 7200



Bottega Veneta 深藍色牛仔
布百結襪 \$17,100
Saint Laurent 藍色星星圖案
絲巾 \$2,450
Ela Stone 金屬蛇頭吊鉤耳環
\$3,250 from On Pedder



JESSICA | STYLING
FORBIA/BUCHI

Bottega Veneta 白色綴亮片連身裙 \$113,250
Miu Miu 深藍色圖案長襪 \$32,500
MSGM 縐羽毛涼鞋 \$4,590 from On Pedder
Jonathan Saunders 透明粉紅色平鞋太陽鏡 \$3,600

NASTYA GUSEVA

Height 180/5'11" Bust 82/32.5" Waist 60/23.5" Hips 90/35.5" Hair Dark Blonde Eyes Brown Born in 1995

Morph

Morph Management, 36 Jangmun-ro Yongsan-gu Seoul Korea ZIP 04393 | Phone: +82 2 797 7200

JESSICA STYLING
Art direction: Vincent Choi Styling: Vincent Choi Hair: Yu Liu @ Queen's private /
 Makeup: Hanyu @ Colour surfaces Photo: Timothy Lee Model: Nastya G Mission Model

今夏, Bottega Veneta 以打造漫不經心的鞋履形象為靈感, 率性的牛仔布繡上燕片及拱橋格仔布, 隨風搖曳的裙擺對人愛不釋手。
 深藍色牛仔布繡燕片連身裙 \$113,250
 卡其色鱷魚皮拱橋皮手挽袋 \$99,000

032

SUMMER'S DESIRE

藍天與白風、微風撲臉, 放下沉重的工作壓力, 懶洋洋地於陽光下享受著夏日氣息, 不正是我們所嚮往的嗎?

www.jessicastyle.com

all about the
OCEAN

Styling/ Karan Ling
 Photography/ Vinki Ng
 Hair/ OK-Cap Cheung @Gifok.com
 Makeup/ Ikon Tsang
 Models/ Nastya G. @Mission Models

MINI'S MODE | CAT-COUTURE | YOU CAN

棕色雪紡連身長裙 \$83,500
 金色繡珠刺繡連身(worn ss choker) \$ 5,600
 金色戒指 \$ 5,500 (一套5隻)
 金色手錶 \$ 2,000
 All Valentino

NASTYA GUSEVA

Height 180/5'11" Bust 82/32.5" Waist 60/23.5" Hips 90/35.5" Hair Dark Blonde Eyes Brown Born in 1995

Morph

Morph Management, 36 Jangmun-ro Yongsan-gu Seoul Korea ZIP 04393 | Phone: +82 2 797 7200



NASTYA GUSEVA

Height 180/5'11" Bust 82/32.5" Waist 60/23.5" Hips 90/35.5" Hair Dark Blonde Eyes Brown Born in 1995

Morph

Morph Management, 36 Jangmun-ro Yongsan-gu Seoul Korea ZIP 04393 | Phone: +82 2 797 7200

167 FASHION EXPLORER

DISAYA

WAKE ME UP ON THE TABLE

早上，陽光透過窗戶灑落床邊，伸個懶腰，隨即起床為新一天作好準備。美麗的一天由一份精緻的早餐開始，而這種浪漫生活態度亦是泰國品牌DISAYA的2015春夏系列靈感來源。DISAYA的設計風格一向較為女性化及富童話元素，品牌創辦人MS. DISAYA SORAKRAIKITIKUL是倫敦中央聖馬丁藝術學院畢業的泰國設計師，在西方學習了時裝及首飾設計之後回到曼谷發展，受西方文化影響亦不忘混入東方色彩。今回品牌貫徹主題採用早餐時餐桌上擺放的物件轉化成精緻圖案，加入花邊、鏤摺及十字繡工藝，讓穿起DISAYA的女生喜歡上每個享受早餐的清晨。

set & styling: SWAN photo: SU FAN model: NASTYA G @ MISSION MODELS makeup & hair: YAN LEUNG @ WENDY'S WORDSHOP design: MIM

BLACK & WHITE BREAKFAST WITH FLORAL PATTERN RUFFLE SHIRT \$2,550
BLACK & WHITE BREAKFAST WITH FLORAL PATTERN SHORTS \$2,150

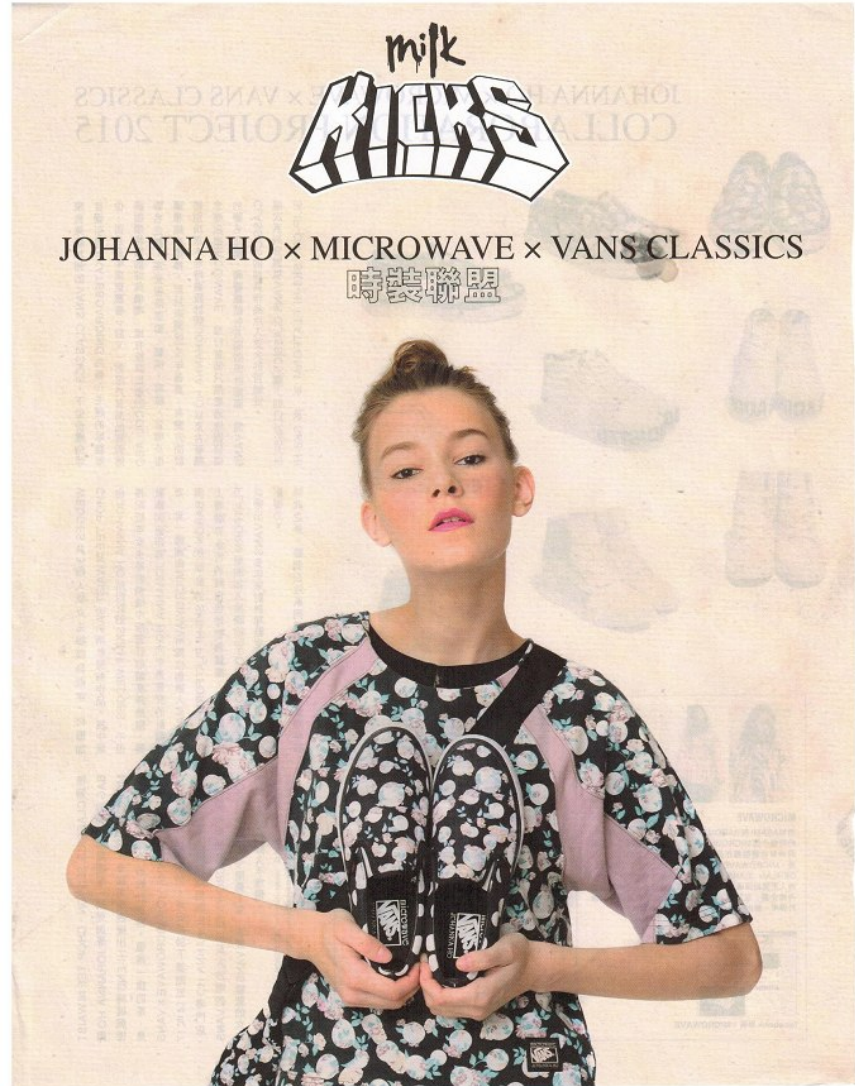
MARON & RED CHILI COOL ORBIL COOL HOOVY \$199
BLACK GRANITE & LIGHT GREY-SAGE PADDIS SPORTS BIA \$199
SILK & SATIN VACATION A RED CHILI SANG TOWN SPORTS \$199
SILK & SATIN VACATION A RED CHILI SANG TOWN SPORTS \$199
CORNE BLACK & RED ZEST ANKLET SLIDE SLIPPERS \$49

NASTYA GUSEVA

Height 180/5'11" Bust 82/32.5" Waist 60/23.5" Hips 90/35.5" Hair Dark Blonde Eyes Brown Born in 1995

Morph

Morph Management, 36 Jangmun-ro Yongsan-gu Seoul Korea ZIP 04393 | Phone: +82 2 797 7200



NASTYA GUSEVA

Height 180/5'11" Bust 82/32.5" Waist 60/23.5" Hips 90/35.5" Hair Dark Blonde Eyes Brown Born in 1995

Morph

Morph Management, 36 Jangmun-ro Yongsan-gu Seoul Korea ZIP 04393 | Phone: +82 2 797 7200



NASTYA GUSEVA

Height 180/5'11" Bust 82/32.5" Waist 60/23.5" Hips 90/35.5" Hair Dark Blonde Eyes Brown Born in 1995

Morph

Morph Management, 36 Jangmun-ro Yongsan-gu Seoul Korea ZIP 04393 | Phone: +82 2 797 7200



NASTYA GUSEVA

Height 180/5'11" Bust 82/32.5" Waist 60/23.5" Hips 90/35.5" Hair Dark Blonde Eyes Brown Born in 1995

Morph

Morph Management, 36 Jangmun-ro Yongsan-gu Seoul Korea ZIP 04393 | Phone: +82 2 797 7200



NASTYA GUSEVA

Height 180/5'11" Bust 82/32.5" Waist 60/23.5" Hips 90/35.5" Hair Dark Blonde Eyes Brown Born in 1995