

Morph

Morph Management, 36 Jangmun-ro Yongsan-gu Seoul Korea ZIP 04393 | Phone: +82 2 797 7200



LIA PAVLOVA (@lia.pavlova)

Height 178/5'10" Bust 78/30.5" Waist 60/23.5" Hips 88/34.5" Hair Brown Eyes Blue Born in 1900

Morph

Morph Management, 36 Jangmun-ro Yongsan-gu Seoul Korea ZIP 04393 | Phone: +82 2 797 7200



GUCCI

LIA PAVLOVA (@lia.pavlova)

Height 178/5'10" Bust 78/30.5" Waist 60/23.5" Hips 88/34.5" Hair Brown Eyes Blue Born in 1900

Morph

Morph Management, 36 Jangmun-ro Yongsan-gu Seoul Korea ZIP 04393 | Phone: +82 2 797 7200



GUCCI

LIA PAVLOVA (@lia.pavlova)

Height 178/5'10" Bust 78/30.5" Waist 60/23.5" Hips 88/34.5" Hair Brown Eyes Blue Born in 1900

Morph

Morph Management, 36 Jangmun-ro Yongsan-gu Seoul Korea ZIP 04393 | Phone: +82 2 797 7200



GUCCI

LIA PAVLOVA (@lia.pavlova)

Height 178/5'10" Bust 78/30.5" Waist 60/23.5" Hips 88/34.5" Hair Brown Eyes Blue Born in 1900

Morph

Morph Management, 36 Jangmun-ro Yongsan-gu Seoul Korea ZIP 04393 | Phone: +82 2 797 7200



T-shirt glissé LOEWE.
Basique relief AREA NYC.
Chaussons MASSARO.
Colonne AMERICAN APPAREL.
Brunch d'oreilles personnalisées
par FUNKY TOWN, NYC.



LIA PAVLOVA (@lia.pavlova)

Height 178/5'10" Bust 78/30.5" Waist 60/23.5" Hips 88/34.5" Hair Brown Eyes Blue Born in 1900

Morph

Morph Management, 36 Jangmun-ro Yongsan-gu Seoul Korea ZIP 04393 | Phone: +82 2 797 7200



LIA PAVLOVA (@lia.pavlova)

Height 178/5'10" Bust 78/30.5" Waist 60/23.5" Hips 88/34.5" Hair Brown Eyes Blue Born in 1900

Morph

Morph Management, 36 Jangmun-ro Yongsan-gu Seoul Korea ZIP 04393 | Phone: +82 2 797 7200



*Chandail tricoté à manches
longues LACOSTE.
Haut en cuir WANDA NYLON.
Boucles d'oreilles personnalisées par
FUNKY TOWN, NYC.
Colliers (portés sur les mains)
WE LOVE COLORS.
Col personnalisé par LONG XU.*

*Chandail à manches prolongées COPERNI FEMME.
Haut tricoté asymétrique sans manches ROSETTA GETTY.
Shorts taille basse tricotés MAX MARA.
Colliers AMERICAN APPAREL.
Col personnalisé par LONG XU.
Boucles d'oreilles personnalisées par FUNKY TOWN, NYC.*

LIA PAVLOVA (@lia.pavlova)

Height 178/5'10" Bust 78/30.5" Waist 60/23.5" Hips 88/34.5" Hair Brown Eyes Blue Born in 1900

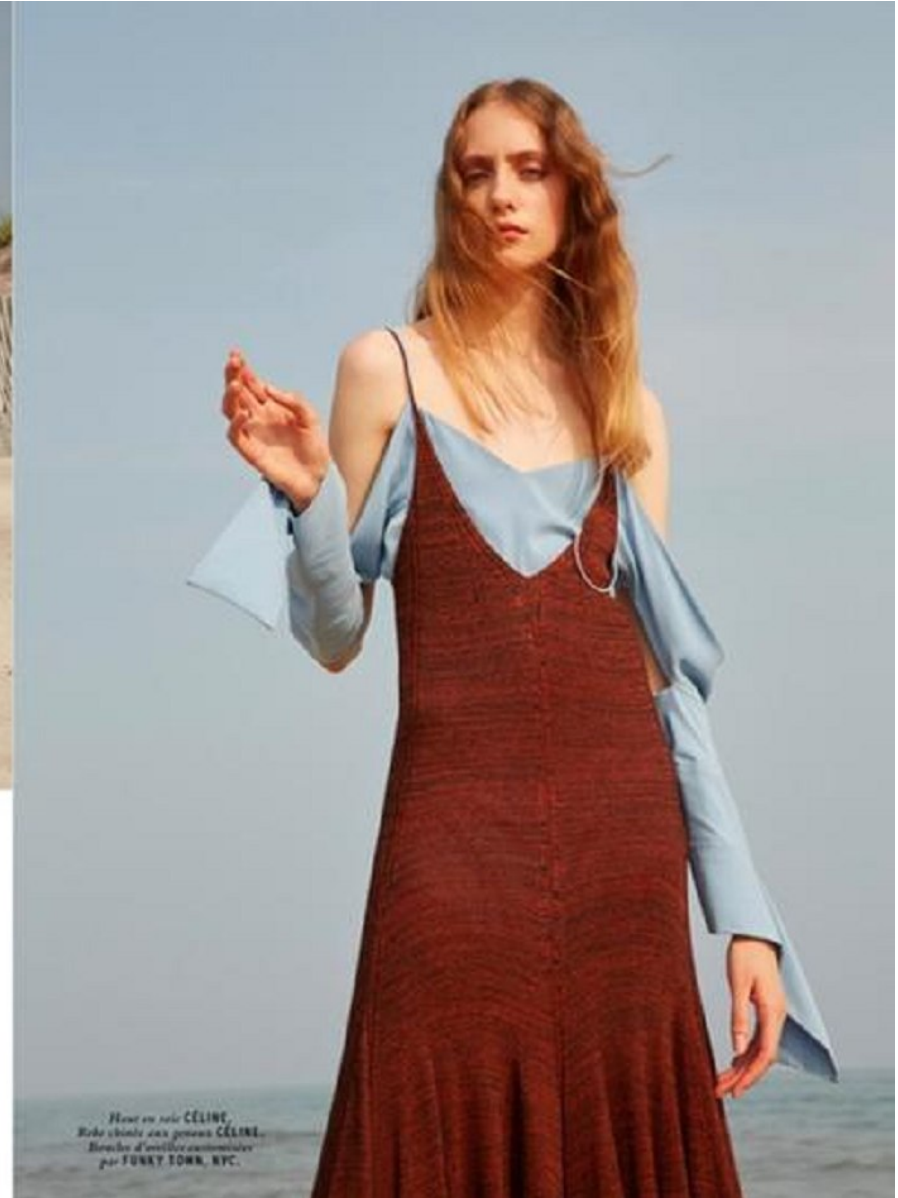
Morph

Morph Management, 36 Jangmun-ro Yongsan-gu Seoul Korea ZIP 04393 | Phone: +82 2 797 7200

*Le bleu
est
une couleur
chaude*

Matières et coupes se superposent dans
la lumière, beige et bleu se confondent
comme la mer et l'horizon, alors que
le rouge triomphe, funèbre et étincelant

*Photographe Thomas Giddings
Styliste Clare Byrne*



LIA PAVLOVA (@lia.pavlova)

Height 178/5'10" Bust 78/30.5" Waist 60/23.5" Hips 88/34.5" Hair Brown Eyes Blue Born in 1900

Morph

Morph Management, 36 Jangmun-ro Yongsan-gu Seoul Korea ZIP 04393 | Phone: +82 2 797 7200



LIA PAVLOVA (@lia.pavlova)

Height 178/5'10" Bust 78/30.5" Waist 60/23.5" Hips 88/34.5" Hair Brown Eyes Blue Born in 1900

Morph

Morph Management, 36 Jangmun-ro Yongsan-gu Seoul Korea ZIP 04393 | Phone: +82 2 797 7200



LIA PAVLOVA (@lia.pavlova)

Height 178/5'10" Bust 78/30.5" Waist 60/23.5" Hips 88/34.5" Hair Brown Eyes Blue Born in 1900

Morph

Morph Management, 36 Jangmun-ro Yongsan-gu Seoul Korea ZIP 04393 | Phone: +82 2 797 7200



LIA PAVLOVA (@lia.pavlova)

Height 178/5'10" Bust 78/30.5" Waist 60/23.5" Hips 88/34.5" Hair Brown Eyes Blue Born in 1900

Morph

Morph Management, 36 Jangmun-ro Yongsan-gu Seoul Korea ZIP 04393 | Phone: +82 2 797 7200



LIA PAVLOVA (@lia.pavlova)

Height 178/5'10" Bust 78/30.5" Waist 60/23.5" Hips 88/34.5" Hair Brown Eyes Blue Born in 1900

Morph

Morph Management, 36 Jangmun-ro Yongsan-gu Seoul Korea ZIP 04393 | Phone: +82 2 797 7200



LIA PAVLOVA (@lia.pavlova)

Height 178/5'10" Bust 78/30.5" Waist 60/23.5" Hips 88/34.5" Hair Brown Eyes Blue Born in 1900

Morph

Morph Management, 36 Jangmun-ro Yongsan-gu Seoul Korea ZIP 04393 | Phone: +82 2 797 7200



LIA PAVLOVA (@lia.pavlova)

Height 178/5'10" Bust 78/30.5" Waist 60/23.5" Hips 88/34.5" Hair Brown Eyes Blue Born in 1900

Morph

Morph Management, 36 Jangmun-ro Yongsan-gu Seoul Korea ZIP 04393 | Phone: +82 2 797 7200



LIA PAVLOVA (@lia.pavlova)

Height 178/5'10" Bust 78/30.5" Waist 60/23.5" Hips 88/34.5" Hair Brown Eyes Blue Born in 1900

Morph

Morph Management, 36 Jangmun-ro Yongsan-gu Seoul Korea ZIP 04393 | Phone: +82 2 797 7200



LIA PAVLOVA (@lia.pavlova)

Height 178/5'10" Bust 78/30.5" Waist 60/23.5" Hips 88/34.5" Hair Brown Eyes Blue Born in 1900

Morph

Morph Management, 36 Jangmun-ro Yongsan-gu Seoul Korea ZIP 04393 | Phone: +82 2 797 7200



LIA PAVLOVA (@lia.pavlova)

Height 178/5'10" Bust 78/30.5" Waist 60/23.5" Hips 88/34.5" Hair Brown Eyes Blue Born in 1900

Morph

Morph Management, 36 Jangmun-ro Yongsan-gu Seoul Korea ZIP 04393 | Phone: +82 2 797 7200

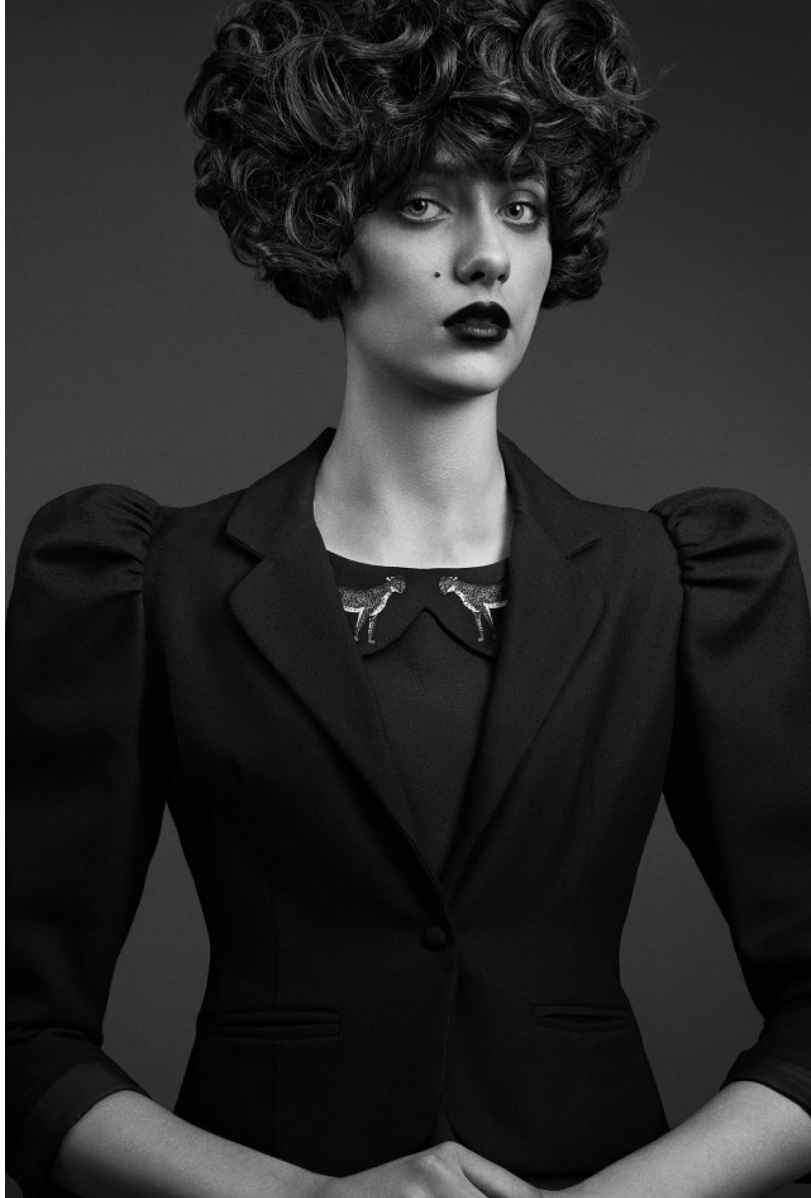


LIA PAVLOVA (@lia.pavlova)

Height 178/5'10" Bust 78/30.5" Waist 60/23.5" Hips 88/34.5" Hair Brown Eyes Blue Born in 1900

Morph

Morph Management, 36 Jangmun-ro Yongsan-gu Seoul Korea ZIP 04393 | Phone: +82 2 797 7200



LIA PAVLOVA (@lia.pavlova)

Height 178/5'10" Bust 78/30.5" Waist 60/23.5" Hips 88/34.5" Hair Brown Eyes Blue Born in 1900

Morph

Morph Management, 36 Jangmun-ro Yongsan-gu Seoul Korea ZIP 04393 | Phone: +82 2 797 7200



GIVENCHY 드레이프 디테일의 품,
칼업트의 착용에서 영감을 받은
코사이크 픽셀 코린트가 인상적인
비서커 재킷, 레드와 화이트 컬러
블록으로 포인트를 준 벨트, 이질 장식의
스웨이드 소재의 FENDI 아이제이드와
스워드, 깃털이 어우러진 이어링.



LIA PAVLOVA (@lia.pavlova)

Height 178/5'10" Bust 78/30.5" Waist 60/23.5" Hips 88/34.5" Hair Brown Eyes Blue Born in 1900

Morph

Morph Management, 36 Jangmun-ro Yongsan-gu Seoul Korea ZIP 04393 | Phone: +82 2 797 7200



MICHAEL MICHAEL KORS 소매에
지퍼를 장식한 카탈루냐 레인의
스웨트셔츠와 미니스커트,
CHANEL 장식적인 진주 오브제를
장식한 라운드 넥탑, CHLOÉ
프레스드그린 컬러의 사이하이 부츠,



PRADA 삼베 가죽으로 트리밍한
아트데코 프린트의 드레스와 브리
컬리 실크 스카프, FENDI 핑크색
아케이드의 브랜딩 로고가 어우러진
비트윈 터틀넥 일.

LIA PAVLOVA (@lia.pavlova)

Height 178/5'10" Bust 78/30.5" Waist 60/23.5" Hips 88/34.5" Hair Brown Eyes Blue Born in 1900

Morph

Morph Management, 36 Jangmun-ro Yongsan-gu Seoul Korea ZIP 04393 | Phone: +82 2 797 7200



LIA PAVLOVA (@lia.pavlova)

Height 178/5'10" Bust 78/30.5" Waist 60/23.5" Hips 88/34.5" Hair Brown Eyes Blue Born in 1900

Morph

Morph Management, 36 Jangmun-ro Yongsan-gu Seoul Korea ZIP 04393 | Phone: +82 2 797 7200



LIA PAVLOVA (@lia.pavlova)

Height 178/5'10" Bust 78/30.5" Waist 60/23.5" Hips 88/34.5" Hair Brown Eyes Blue Born in 1900

Morph

Morph Management, 36 Jangmun-ro Yongsan-gu Seoul Korea ZIP 04393 | Phone: +82 2 797 7200



LIA PAVLOVA (@lia.pavlova)

Height 178/5'10" Bust 78/30.5" Waist 60/23.5" Hips 88/34.5" Hair Brown Eyes Blue Born in 1900

Morph

Morph Management, 36 Jangmun-ro Yongsan-gu Seoul Korea ZIP 04393 | Phone: +82 2 797 7200



LIA PAVLOVA (@lia.pavlova)

Height 178/5'10" Bust 78/30.5" Waist 60/23.5" Hips 88/34.5" Hair Brown Eyes Blue Born in 1900

Morph

Morph Management, 36 Jangmun-ro Yongsan-gu Seoul Korea ZIP 04393 | Phone: +82 2 797 7200



LIA PAVLOVA (@lia.pavlova)

Height 178/5'10" Bust 78/30.5" Waist 60/23.5" Hips 88/34.5" Hair Brown Eyes Blue Born in 1900

Morph

Morph Management, 36 Jangmun-ro Yongsan-gu Seoul Korea ZIP 04393 | Phone: +82 2 797 7200



LIA PAVLOVA (@lia.pavlova)

Height 178/5'10" Bust 78/30.5" Waist 60/23.5" Hips 88/34.5" Hair Brown Eyes Blue Born in 1900

Morph

Morph Management, 36 Jangmun-ro Yongsan-gu Seoul Korea ZIP 04393 | Phone: +82 2 797 7200



LIA PAVLOVA (@lia.pavlova)

Height 178/5'10" Bust 78/30.5" Waist 60/23.5" Hips 88/34.5" Hair Brown Eyes Blue Born in 1900

Morph

Morph Management, 36 Jangmun-ro Yongsan-gu Seoul Korea ZIP 04393 | Phone: +82 2 797 7200



LIA PAVLOVA (@lia.pavlova)

Height 178/5'10" Bust 78/30.5" Waist 60/23.5" Hips 88/34.5" Hair Brown Eyes Blue Born in 1900

Morph

Morph Management, 36 Jangmun-ro Yongsan-gu Seoul Korea ZIP 04393 | Phone: +82 2 797 7200



소녀와 소년의 경계를 허문 시크한 스포츠 믹스 룩. 느긋하지만 묘한
긴장감이 느껴지는, 나른한 듯 발톱을 세운 고양이와 닮았다.

디테일을 절제한 심플한 룩이기에
그 본연의 아름다움이 더욱
강조되는 반전의 미. 또 루스한
오버 핏에서 여유가 묻어난다.

스웨트 원피스 빈들 레이디스
가죽 베스트 빈들 레이디스
스니커즈 푸마
플라워 스냅백 햇츠온

LIA PAVLOVA (@lia.pavlova)

Height 178/5'10" Bust 78/30.5" Waist 60/23.5" Hips 88/34.5" Hair Brown Eyes Blue Born in 1900

Morph

Morph Management, 36 Jangmun-ro Yongsan-gu Seoul Korea ZIP 04393 | Phone: +82 2 797 7200

FACTORY GIRL

에디 세즈윅을 추억하다

에디 세즈윅, 그녀의 눈빛 속에서는 폭발할 것 같은 불안감이 엿보인다.
앤디 워홀의 뮤즈이자 밥 딜런의 연인이었던 그녀의 스타일과 삶을 재조명한다.

언제라도 모든 것을 털어 버리고 떠날 수 있다는 듯, 그녀에게서는 바람 냄새가 묻어난다.
한 낮의 뜨거움과 석양의 나른함이 공존한다.

베이지 코트 로워
점퍼 주시 꾸뛰르
프린트 블라우스 커밍스텝
프린트 스커트 커밍스텝
오픈토 힐 캐롤리나 헤레라
큐빅 이어링 젤마 알루스 디자인 by 에토르



LIA PAVLOVA (@lia.pavlova)

Height 178/5'10" Bust 78/30.5" Waist 60/23.5" Hips 88/34.5" Hair Brown Eyes Blue Born in 1900