

Morph

Morph Management, 36 Jangmun-ro Yongsan-gu Seoul Korea ZIP 04393 | Phone: +82 2 797 7200



IRINA GORBAN

Height 175/5'9" Bust 82/32.5" Waist 59/23" Hips 87/34.5" Hair Light Brown Eyes Blue Born in 1900

Morph

Morph Management, 36 Jangmun-ro Yongsan-gu Seoul Korea ZIP 04393 | Phone: +82 2 797 7200



원목 데이지, 패치워크 디테일 데님 드레스와 로고 청장식 네그리스 Louis Vuitton,
화이트 스트립 카멜레온 쥘리 Fendi, 레드 컬러 배너 브레이슬릿 AX,
시각 프레임 블루 선글라스 Chanel, 알코올 가죽으로 장식된
캔버스 소재 메스파드러유 슈즈와 바퀴에 놓인 에르 맥 Hermès

네이비 컬러 스트라이프 니트 Vince, 데님 스커트 Balmain,
양 손목에 착용한 화이트와 블랙 볼 장식 브레이슬릿 Chanel,
네이비와 화이트 컬러가 조화를 이룬 모자 Hermès

IRINA GORBAN

Height 175/5'9" Bust 82/32.5" Waist 59/23" Hips 87/34.5" Hair Light Brown Eyes Blue Born in 1900

Morph

Morph Management, 36 Jangmun-ro Yongsan-gu Seoul Korea ZIP 04393 | Phone: +82 2 797 7200



IRINA GORBAN

Height 175/5'9" Bust 82/32.5" Waist 59/23" Hips 87/34.5" Hair Light Brown Eyes Blue Born in 1900

Morph

Morph Management, 36 Jangmun-ro Yongsan-gu Seoul Korea ZIP 04393 | Phone: +82 2 797 7200



Tropical Paradise

미움은 이번 시즌 가장 속의 새끼 열매를 받은 이국적인 열대 열대어로 완성된 세미 메이크업을 선보였다. 어두운 볼록 피코 그린, 오렌지색 핑크 및 황금 피코트로 그린 듯한 선명하고 비현실적인 컬러로 완성된 드로퍼컬룩은 그레머틱한 느낌을 더해 보인하게 마무리한다.

makeup 수에두라 아이코너 컬러의 리얼리 미움 컬러를 눈 윗머리부터 아이너로까지 넓게 발라주었고 아이콜러는 세미 아이글로스 블랙 크린을 발랐다. 메이크업 포어비 아쿠아리아나 N8으로 정제된 라인 관리를 보완하여 그린다. 메이크업 외의 향은 메이크업으로 발라주며 더욱 더욱 강조한다. 눈썹 윗 끝이 높아져 볼 안쪽으로 나스 디자인이 붙어서 첫 번째 컬러를 발라 발라주어 아이브리시드 첫 컬러 컬러를 한 번 더 도포해 황금 핑크의 무드를 한껏 강조한다. 입술은 시벨 루소 알파인 글로스 07 레드 컬러를 음영 발라 볼륨감을 연출한다.

리얼 컬러의 첫 컬러 드레스 핑방

IRINA GORBAN

Height 175/5'9" Bust 82/32.5" Waist 59/23" Hips 87/34.5" Hair Light Brown Eyes Blue Born in 1900

Morph

Morph Management, 36 Jangmun-ro Yongsan-gu Seoul Korea ZIP 04393 | Phone: +82 2 797 7200



Worcester Stearns Feb. 1975

IRINA GORBAN

Height 175/5'9" Bust 82/32.5" Waist 59/23" Hips 87/34.5" Hair Light Brown Eyes Blue Born in 1900

Morph

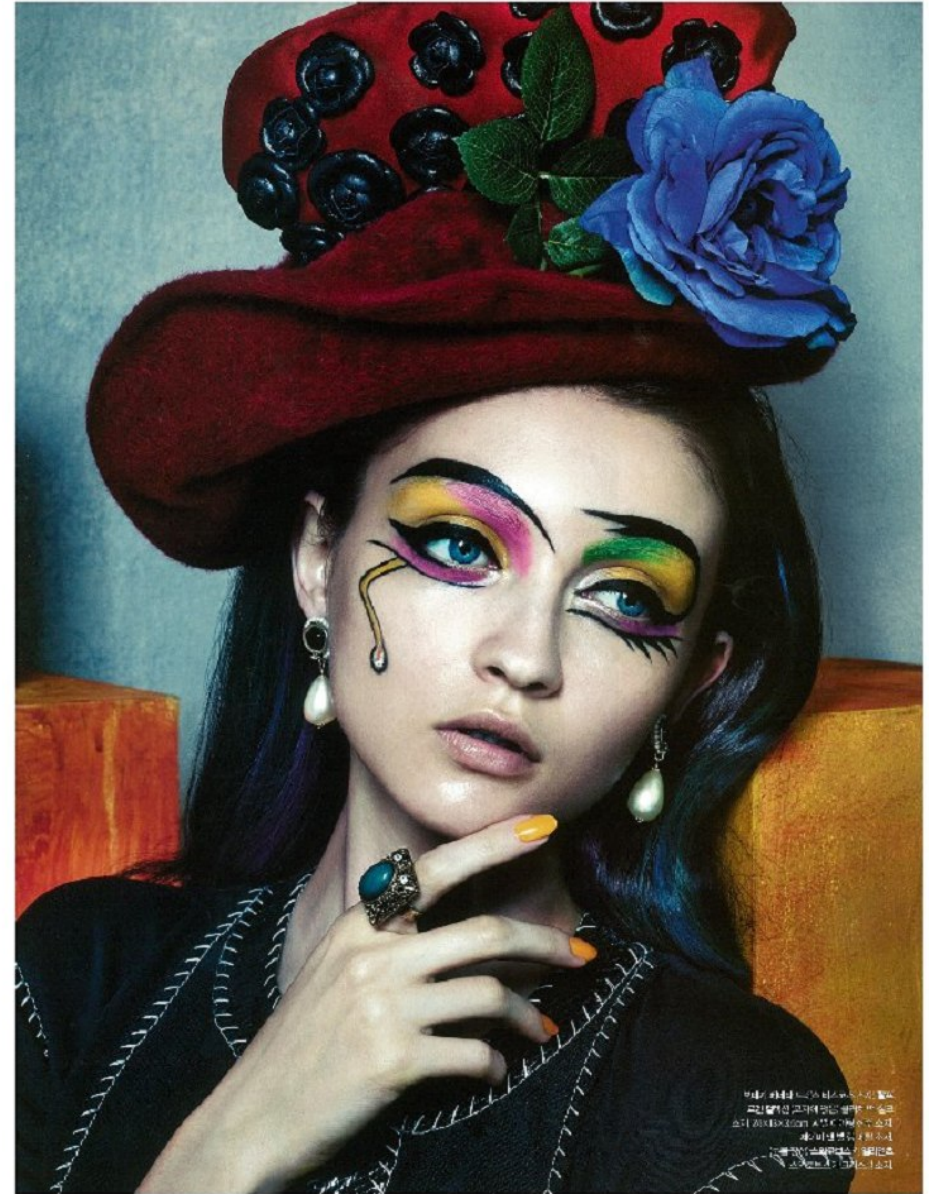
Morph Management, 36 Jangmun-ro Yongsan-gu Seoul Korea ZIP 04393 | Phone: +82 2 797 7200

Picasso Lady

피카소를 모방한 여자를 가늠할 수 없다. 완벽한 모방을 하기 때문이다. 피카소는, 그와 그의 그림 속 여자들은 오시유라다. *management: HONG JANG HYUN*



The Woman in a Red Hat, 1907



IRINA GORBAN

Height 175/5'9" Bust 82/32.5" Waist 59/23" Hips 87/34.5" Hair Light Brown Eyes Blue Born in 1900

Morph

Morph Management, 36 Jangmun-ro Yongsan-gu Seoul Korea ZIP 04393 | Phone: +82 2 797 7200



IRINA GORBAN

Height 175/5'9" Bust 82/32.5" Waist 59/23" Hips 87/34.5" Hair Light Brown Eyes Blue Born in 1900

Morph

Morph Management, 36 Jangmun-ro Yongsan-gu Seoul Korea ZIP 04393 | Phone: +82 2 797 7200



IRINA GORBAN

Height 175/5'9" Bust 82/32.5" Waist 59/23" Hips 87/34.5" Hair Light Brown Eyes Blue Born in 1900

Morph

Morph Management, 36 Jangmun-ro Yongsan-gu Seoul Korea ZIP 04393 | Phone: +82 2 797 7200



IRINA GORBAN

Height 175/5'9" Bust 82/32.5" Waist 59/23" Hips 87/34.5" Hair Light Brown Eyes Blue Born in 1900

Morph

Morph Management, 36 Jangmun-ro Yongsan-gu Seoul Korea ZIP 04393 | Phone: +82 2 797 7200



IRINA GORBAN

Height 175/5'9" Bust 82/32.5" Waist 59/23" Hips 87/34.5" Hair Light Brown Eyes Blue Born in 1900

Morph

Morph Management, 36 Jangmun-ro Yongsan-gu Seoul Korea ZIP 04393 | Phone: +82 2 797 7200



IRINA GORBAN

Height 175/5'9" Bust 82/32.5" Waist 59/23" Hips 87/34.5" Hair Light Brown Eyes Blue Born in 1900

Morph

Morph Management, 36 Jangmun-ro Yongsan-gu Seoul Korea ZIP 04393 | Phone: +82 2 797 7200



china collar ivory sheer blouse by CLUB MONACO
eyelid patterned ivory leather embellished sheer dress by LOUIS VUITTON
a pair of birds motif emerald color ceramic objects by BADA DESIGN ATELIER
petal shape classic table mat worn as headpiece by MAISON DE PARIS



khaki color wide brim hat by DIOR
eyelid patterned white large collar decoration by LOUIS VUITTON
laced white cotton blouse by MAX MARA
embroidered black organza dress with organza ruffles, embroidered khaki color large Paekaboo bag by FENDI
black large cotton bow tie worn as belt by MARNI

2 pumpkin motif black ceramic ornaments by BADA DESIGN ATELIER

IRINA GORBAN

Height 175/5'9" Bust 82/32.5" Waist 59/23" Hips 87/34.5" Hair Light Brown Eyes Blue Born in 1900

Morph

Morph Management, 36 Jangmun-ro Yongsan-gu Seoul Korea ZIP 04393 | Phone: +82 2 797 7200



IRINA GORBAN

Height 175/5'9" Bust 82/32.5" Waist 59/23" Hips 87/34.5" Hair Light Brown Eyes Blue Born in 1900

Morph

Morph Management, 36 Jangmun-ro Yongsan-gu Seoul Korea ZIP 04393 | Phone: +82 2 797 7200



IRINA GORBAN

Height 175/5'9" Bust 82/32.5" Waist 59/23" Hips 87/34.5" Hair Light Brown Eyes Blue Born in 1900

Morph

Morph Management, 36 Jangmun-ro Yongsan-gu Seoul Korea ZIP 04393 | Phone: +82 2 797 7200



VOGUE PROMOTION

A stunning crystal and jet necklace is decoration enough – apart from a chic sparkler on your finger, no other details are necessary
This page: Chic ring in purple blue, £165, People necklace, £570, All Swarovski
 Myriad colours, from deepest purple to scarlet, ocean blue and forest green, perfectly imitate feathers fluttering in a breeze and make for show-stopping pieces
Opposite, clockwise from top left: Parade bangle, £285, Purple Red ring, £135, Proudly necklace, £720, All Swarovski

A shining bird-in-flight brooch, a crystal-encrusted cuff and shimmering earrings – Swarovski's winter jewellery collection brings light to all it touches
Opposite: Phoenix brooch, £140, Louise necklace, £112, Nirvana ring in emerald, £180, Kinship evening bag in silver, £465, Platinum cuff, £128, Night-time pierced earrings, £107, All Swarovski
 Strike a pose – Swarovski's delicate bracelets, bangles and elegant earrings subtly complement any evening gown
This page: Boulder pierced earrings, £92, Nautical bracelet, £67, Powder bangle (one of trio), £115, Party Time evening bag, special commission – similar styles from £205, All Swarovski
 For more details on Swarovski or to find your nearest store, call 01737 856314 or visit Swarovski.com

ERIC FRIESEN

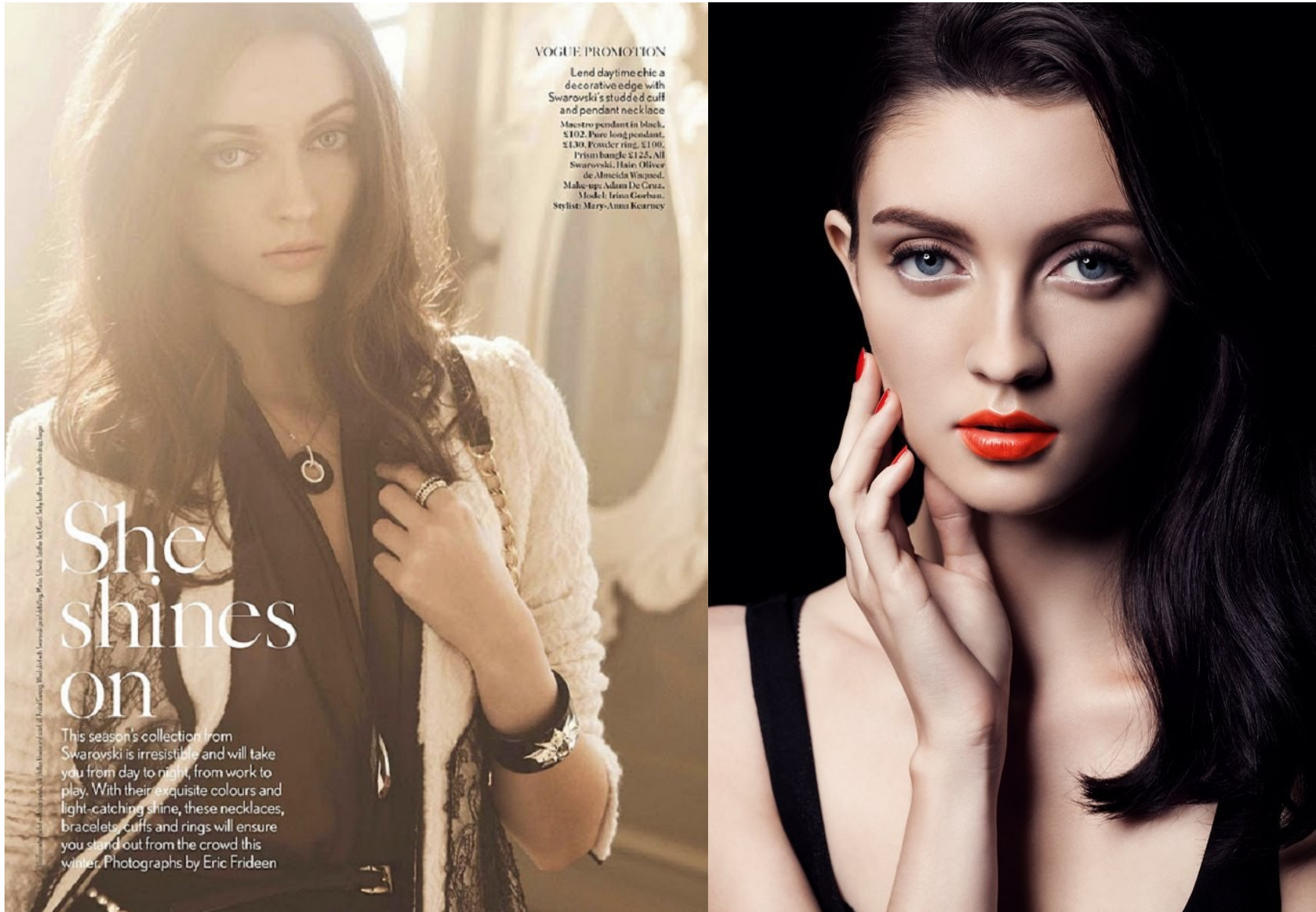
ERIC FRIESEN

IRINA GORBUN

Height 175/5'9" Bust 82/32.5" Waist 59/23" Hips 87/34.5" Hair Light Brown Eyes Blue Born in 1900

Morph

Morph Management, 36 Jangmun-ro Yongsan-gu Seoul Korea ZIP 04393 | Phone: +82 2 797 7200



IRINA GORBAN

Height 175/5'9" Bust 82/32.5" Waist 59/23" Hips 87/34.5" Hair Light Brown Eyes Blue Born in 1900

Morph

Morph Management, 36 Jangmun-ro Yongsan-gu Seoul Korea ZIP 04393 | Phone: +82 2 797 7200



IRINA GORBAN

Height 175/5'9" Bust 82/32.5" Waist 59/23" Hips 87/34.5" Hair Light Brown Eyes Blue Born in 1900

Morph

Morph Management, 36 Jangmun-ro Yongsan-gu Seoul Korea ZIP 04393 | Phone: +82 2 797 7200



IRINA GORBAN

Height 175/5'9" Bust 82/32.5" Waist 59/23" Hips 87/34.5" Hair Light Brown Eyes Blue Born in 1900

Morph

Morph Management, 36 Jangmun-ro Yongsan-gu Seoul Korea ZIP 04393 | Phone: +82 2 797 7200



IRINA GORBAN

Height 175/5'9" Bust 82/32.5" Waist 59/23" Hips 87/34.5" Hair Light Brown Eyes Blue Born in 1900

Morph

Morph Management, 36 Jangmun-ro Yongsan-gu Seoul Korea ZIP 04393 | Phone: +82 2 797 7200



IRINA GORBAN

Height 175/5'9" Bust 82/32.5" Waist 59/23" Hips 87/34.5" Hair Light Brown Eyes Blue Born in 1900

Morph

Morph Management, 36 Jangmun-ro Yongsan-gu Seoul Korea ZIP 04393 | Phone: +82 2 797 7200



IRINA GORBAN

Height 175/5'9" Bust 82/32.5" Waist 59/23" Hips 87/34.5" Hair Light Brown Eyes Blue Born in 1900

Morph

Morph Management, 36 Jangmun-ro Yongsan-gu Seoul Korea ZIP 04393 | Phone: +82 2 797 7200



IRINA GORBAN

Height 175/5'9" Bust 82/32.5" Waist 59/23" Hips 87/34.5" Hair Light Brown Eyes Blue Born in 1900

Morph

Morph Management, 36 Jangmun-ro Yongsan-gu Seoul Korea ZIP 04393 | Phone: +82 2 797 7200



Dress: Derecung. On face: Face Fabric Second Skin foundation in Nude, Giorgio Armani, Torracotta Bronzer, Guerlain. On eyes: Black Coffee eyeliner, Lancôme. Carben eye shadow, MAC. Faux cils mascara, Yves Saint Laurent. On lips: Womanly Lipgloss, MAC.



Dress: Malo. Nechlan, Lee Angel. Headpiece, Mistress O Mine Vintage. On face: Face Fabric Second Skin foundation in Nude, Giorgio Armani, Torracotta Bronzer, Guerlain. On eyes: Black Coffee eyeliner, Lancôme. Carben eye shadow, MAC. Faux cils mascara, Yves Saint Laurent. On lips: Womanly Lipgloss, MAC.

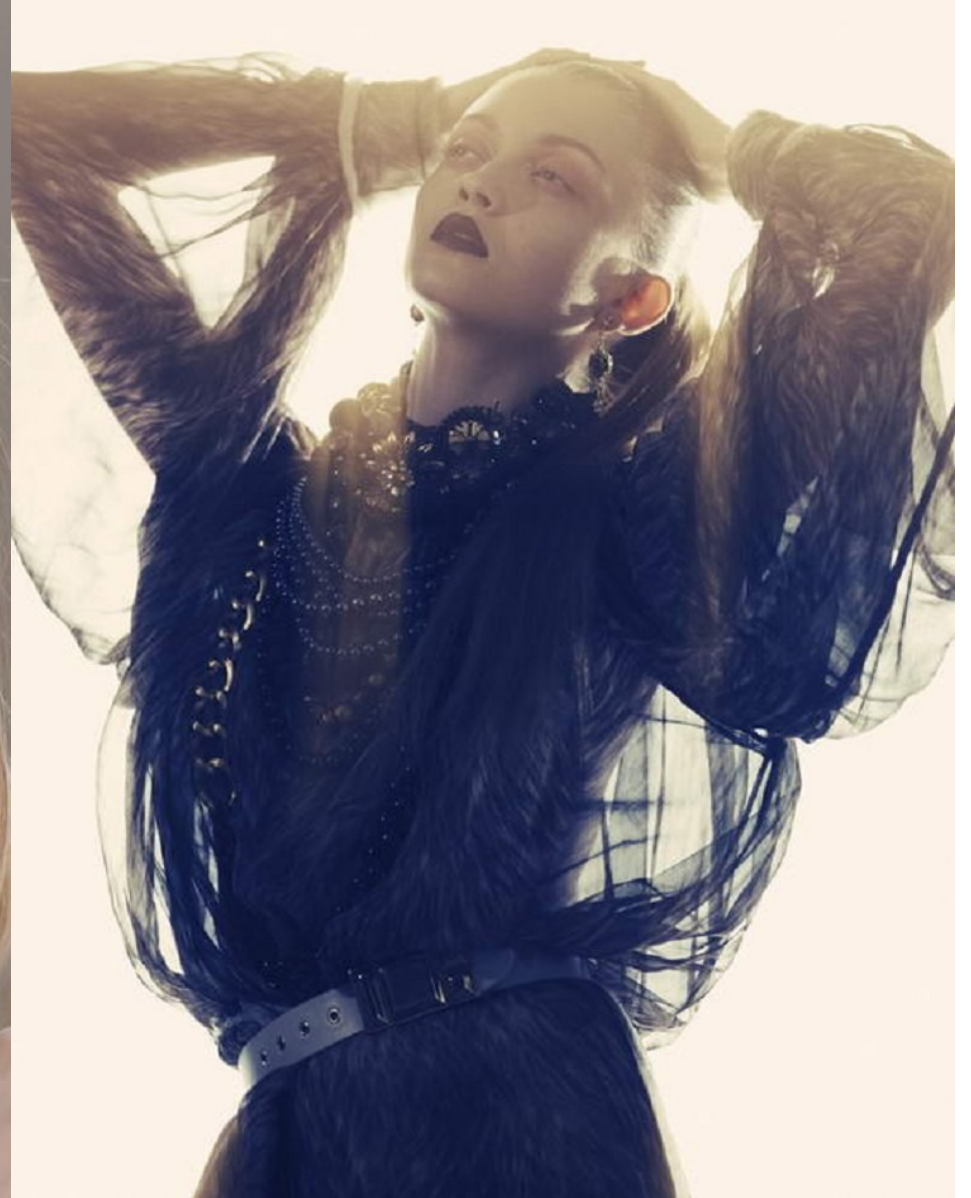
43

IRINA GORBUN

Height 175/5'9" Bust 82/32.5" Waist 59/23" Hips 87/34.5" Hair Light Brown Eyes Blue Born in 1900

Morph

Morph Management, 36 Jangmun-ro Yongsan-gu Seoul Korea ZIP 04393 | Phone: +82 2 797 7200



IRINA GORBAN

Height 175/5'9" Bust 82/32.5" Waist 59/23" Hips 87/34.5" Hair Light Brown Eyes Blue Born in 1900

Morph

Morph Management, 36 Jangmun-ro Yongsan-gu Seoul Korea ZIP 04393 | Phone: +82 2 797 7200



IRINA GORBAN

Height 175/5'9" Bust 82/32.5" Waist 59/23" Hips 87/34.5" Hair Light Brown Eyes Blue Born in 1900

Morph

Morph Management, 36 Jangmun-ro Yongsan-gu Seoul Korea ZIP 04393 | Phone: +82 2 797 7200



IRINA GORBAN

Height 175/5'9" Bust 82/32.5" Waist 59/23" Hips 87/34.5" Hair Light Brown Eyes Blue Born in 1900