

# Morph

Morph Management, 36 Jangmun-ro Yongsan-gu Seoul Korea ZIP 04393 | Phone: +82 2 797 7200



Francy is your ultimate skinny. It hugs every curve and uses super soft technology for the best comfort yet.

**ANNA NEVALA (@annajnevala)**

Height 176/5'9.5" Bust 80/31.5" Waist 59/23" Hips 88/34.5" Hair Brown Eyes Brown Born in 1900

# Morph

Morph Management, 36 Jangmun-ro Yongsan-gu Seoul Korea ZIP 04393 | Phone: +82 2 797 7200



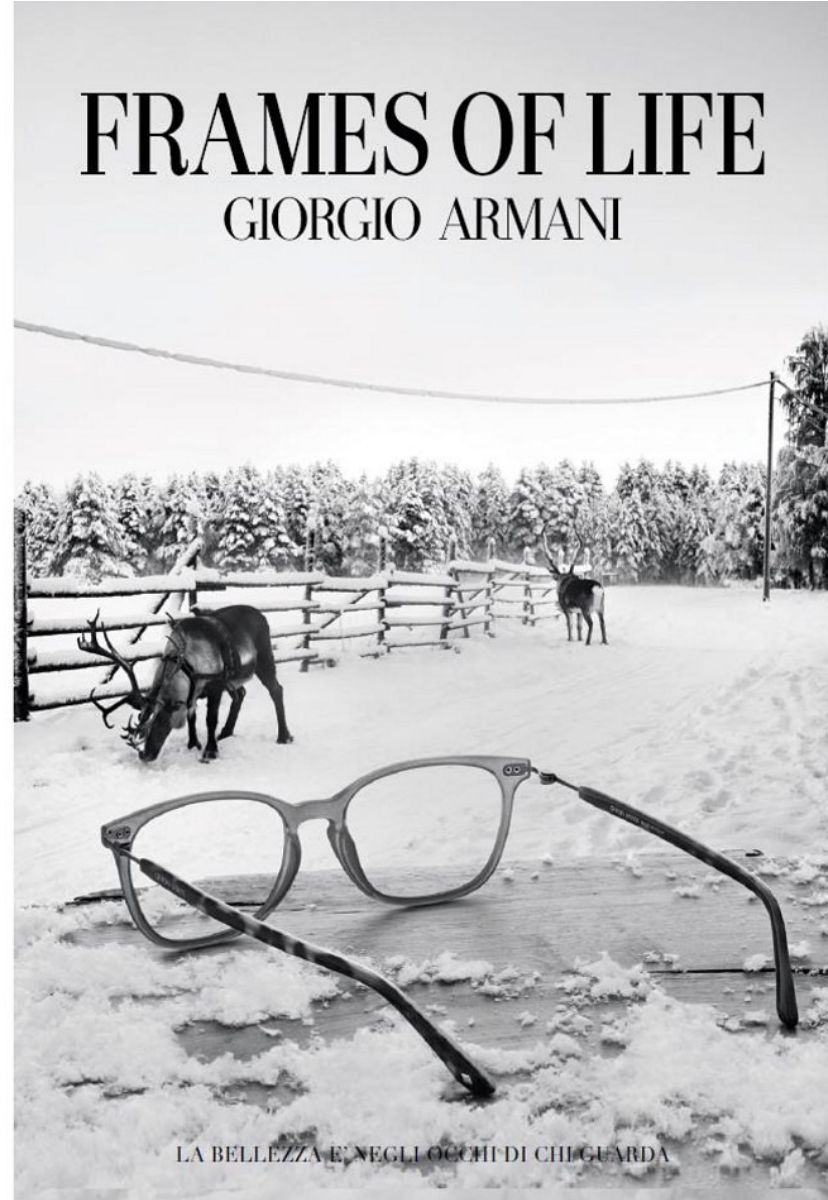
The DNA collection features new washes every season for the bravest innovations Diesel can create.

**ANNA NEVALA** (@annajnevala)

Height 176/5'9.5" Bust 80/31.5" Waist 59/23" Hips 88/34.5" Hair Brown Eyes Brown Born in 1900

# Morph

Morph Management, 36 Jangmun-ro Yongsan-gu Seoul Korea ZIP 04393 | Phone: +82 2 797 7200

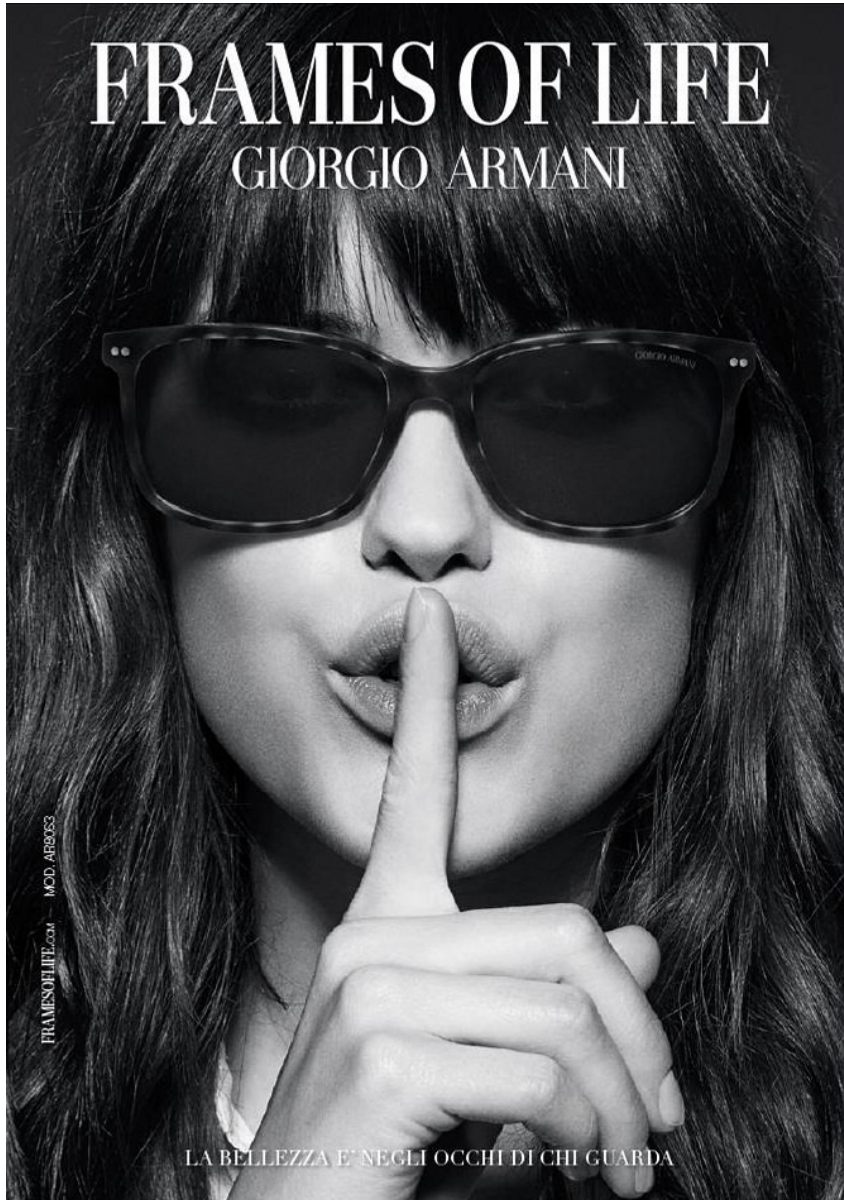


ANNA NEVALA (@annajnevala)

Height 176/5'9.5" Bust 80/31.5" Waist 59/23" Hips 88/34.5" Hair Brown Eyes Brown Born in 1900

# Morph

Morph Management, 36 Jangmun-ro Yongsan-gu Seoul Korea ZIP 04393 | Phone: +82 2 797 7200



ANNA NEVALA (@annajnevala)

Height 176/5'9.5" Bust 80/31.5" Waist 59/23" Hips 88/34.5" Hair Brown Eyes Brown Born in 1900

# Morph

Morph Management, 36 Jangmun-ro Yongsan-gu Seoul Korea ZIP 04393 | Phone: +82 2 797 7200



ANNA NEVALA (@annajnevala)

Height 176/5'9.5" Bust 80/31.5" Waist 59/23" Hips 88/34.5" Hair Brown Eyes Brown Born in 1900

# Morph

Morph Management, 36 Jangmun-ro Yongsan-gu Seoul Korea ZIP 04393 | Phone: +82 2 797 7200



ANNA NEVALA (@annajnevala)

Height 176/5'9.5" Bust 80/31.5" Waist 59/23" Hips 88/34.5" Hair Brown Eyes Brown Born in 1900

# Morph

Morph Management, 36 Jangmun-ro Yongsan-gu Seoul Korea ZIP 04393 | Phone: +82 2 797 7200



ANNA NEVALA (@annajnevala)

Height 176/5'9.5" Bust 80/31.5" Waist 59/23" Hips 88/34.5" Hair Brown Eyes Brown Born in 1900

# Morph

Morph Management, 36 Jangmun-ro Yongsan-gu Seoul Korea ZIP 04393 | Phone: +82 2 797 7200



## Muoti

*Uusi tyyli,  
uusi siinä!*



### Pienet mutta niin tärkeät

Ostan uudet bikinit joka vuosi. Se tarkoittaa, että kesä on virallisesti avattu. Tänä vuonna kokeilen eläin-kuoseja, tai paljastan vain kyljet kokouiskarissa. Biitsiltä suunnataan suoraan juhlimaan, ja sehän sopii, koska kesän viilein bilelook paljastaa navan.

ANNA NEVALA (@annajnevala)

Height 176/5'9.5" Bust 80/31.5" Waist 59/23" Hips 88/34.5" Hair Brown Eyes Brown Born in 1900



# Morph

Morph Management, 36 Jangmun-ro Yongsan-gu Seoul Korea ZIP 04393 | Phone: +82 2 797 7200



Epäkuultava  
valkoraudallinen  
paita 123 e, Maison  
Scotch Sininen  
biikinen yllöso,  
jossa punaisia  
palloja 28 e, Helly  
Hanson, Kullainen  
rannekoru 139 e,  
Käivola Koru,  
Kullainen  
kaulakoru, jossa  
kristalleja 179 e,  
leikki, Farakuhame  
89 e, Diesel.

## HIT THE POOL

Parhaissa bikineissä haluat hengata koko päivän.

KAWA H POUR Kineex SAMULI KARALA

66 COSMOPOLITAN TOUKOKUU 2014



DRESS  
00S6ME 0QA4W 42Y  
SHOES GUADALUPY  
Y00750 PR013 T8013

ANNA NEVALA (@annajnevala)

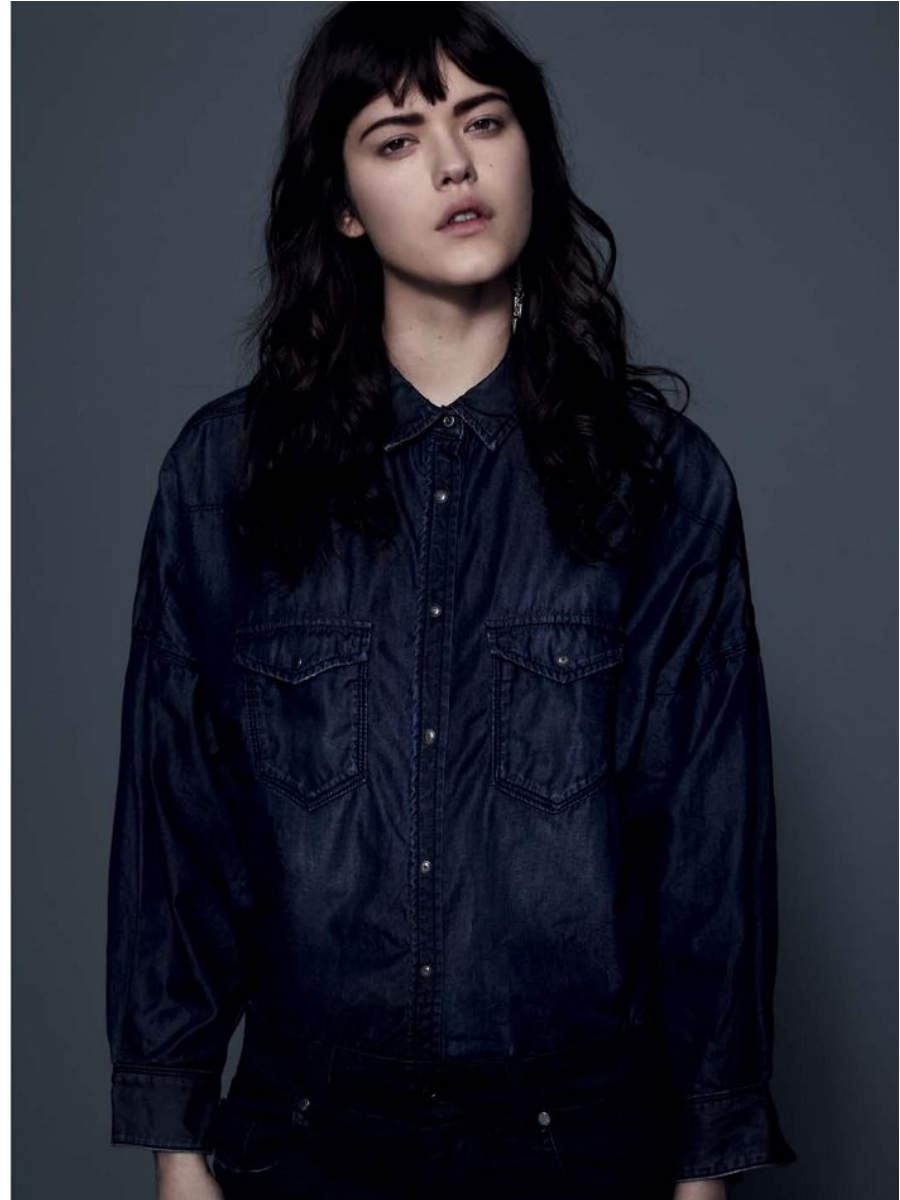
Height 176/5'9.5" Bust 80/31.5" Waist 59/23" Hips 88/34.5" Hair Brown Eyes Brown Born in 1900

# Morph

Morph Management, 36 Jangmun-ro Yongsan-gu Seoul Korea ZIP 04393 | Phone: +82 2 797 7200

DENIM  
FALL / WINTER  
2013

In terms of denim, Diesel is once again leading the evolutionary process with Denim Mutation. Mutation is all about denim changing its skin, using multiple layering technologies to colour and de-colour the material. Whether it's a laser print, a faded colour treatment, a new coating technique or a new generation of fabrics, all of Diesel's expertise has been applied to this new evolution of denim.



ANNA NEVALA (@annajnevala)

Height 176/5'9.5" Bust 80/31.5" Waist 59/23" Hips 88/34.5" Hair Brown Eyes Brown Born in 1900

# Morph

Morph Management, 36 Jangmun-ro Yongsan-gu Seoul Korea ZIP 04393 | Phone: +82 2 797 7200



ANNA NEVALA (@annajnevala)

Height 176/5'9.5" Bust 80/31.5" Waist 59/23" Hips 88/34.5" Hair Brown Eyes Brown Born in 1900



# Morph

Morph Management, 36 Jangmun-ro Yongsan-gu Seoul Korea ZIP 04393 | Phone: +82 2 797 7200



Collerette en soie, Lionel Giroud Garampon, psd. Veste en flanelle, 700 €. pantalon en Néoprène, 380 €, sandales en cuir, 470 €, le tout Emporio Armani.



Collerette en soie, Lionel Giroud Garampon, psd. Gilet en coton et viscose, Acoté, 129 €. Jupe en coton, Club Menaco, 175 €. Cycliste en dentelle, Intimissimi, env. 28 €. Chaussettes en coton, Falke, env. 7 €. Boots en cuir, Stella Luna pour Anthony Vaccarello, psd.

ANNA NEVALA (@annajnevala)

Height 176/5'9.5" Bust 80/31.5" Waist 59/23" Hips 88/34.5" Hair Brown Eyes Brown Born in 1900

# Morph

Morph Management, 36 Jangmun-ro Yongsan-gu Seoul Korea ZIP 04393 | Phone: +82 2 797 7200



Veste en cuir brodée de sequins, Louis Vuitton, psd. Top en coton, Coperni Femme, psd. Jean en denim customisé, Pepe Jeans by Crystal Fighters pour les 40 ans de Pepe Jeans, psd.



Par Stéphanie BRISSAY  
Photos Estelle RANCUREL

Chemise en coton, Alain Figaret. Corset en suède et cuir, Alaïa. Bague portée en camé «Camélia Galbé», en or blanc sertie d'un diamant et céramique, Chanel Joaillerie. A sa main droite: manchette en or gris et diamants, collection «Emprise», Louis Vuitton. Montre «Emprise» en acier, sertie de diamants, cadran opalin, bracetet en veau, Louis Vuitton Horlogerie. Bague «Entre les doigts cosmos» en or blanc et diamants, Van Cleef & Arpels. A sa main gauche: Bagues multi-anneau en or blanc et diamants, O'fée.

ANNA NEVALA (@annajnevala)

Height 176/5'9.5" Bust 80/31.5" Waist 59/23" Hips 88/34.5" Hair Brown Eyes Brown Born in 1900

# Morph

Morph Management, 36 Jangmun-ro Yongsan-gu Seoul Korea ZIP 04393 | Phone: +82 2 797 7200



Chemise en coton,  
**Saint Laurent**  
par **Hedi Slimane**.  
Robe-bustier en  
coton, **Dsquared²**.  
Boucles d'oreilles  
en or blanc et  
diamants, **Dior**  
**Joaillerie**.  
Collier «Force 10»  
en or blanc et  
diamants, **Fred**.  
À sa main droite:  
bague «Pain de  
sucre» en or gris  
et diamants, **Fred**.  
À sa main gauche:  
montre «Force 10»  
en acier, nacre et  
diamants, bracelet  
en corderie, **Fred**.  
Bague multi-  
anneau en or blanc  
et diamants, **O'fée**.  
Bague «Menottes»  
en or blanc  
et diamants,  
**Dinh Van**.

Maquillage Chanel  
par Alexandra  
Schiavi avec Teint  
Les Beiges n°20,  
le Blush Crème de  
Chanel Intonation,  
sur les yeux  
Écriture de Chanel  
Noir, Mascara  
Inimitable Noir,  
Crayon Sourcils  
Brun Naturel, sur  
les lèvres Rouge  
Coco Shine Mutine.

“PORTEZ  
UNE TIARE AU  
PETIT DÉJEUNER  
ET LA  
JOURNÉE SERA  
BEAUCOUP PLUS  
LUMINEUSE”

MARGHERITA MISSONI  
à GRAZIA le 23 avril



This page: Trousers, Dbls1050, Bra top, Dbls2760, Bag, Dbls21000 all by Louis Vuitton

ANNA NEVALA (@annajnevala)

Height 176/5'9.5" Bust 80/31.5" Waist 59/23" Hips 88/34.5" Hair Brown Eyes Brown Born in 1900

# Morph

Morph Management, 36 Jangmun-ro Yongsan-gu Seoul Korea ZIP 04393 | Phone: +82 2 797 7200



*This page Earring (large) Dls3,600, Earring (small) Dls975, Brooch Dls2,900 all by Louis Vuitton*



**ANNA NEVALA (@annajnevala)**

Height 176/5'9.5" Bust 80/31.5" Waist 59/23" Hips 88/34.5" Hair Brown Eyes Brown Born in 1900



# Morph

Morph Management, 36 Jangmun-ro Yongsan-gu Seoul Korea ZIP 04393 | Phone: +82 2 797 7200



ANNA NEVALA (@annajnevala)

Height 176/5'9.5" Bust 80/31.5" Waist 59/23" Hips 88/34.5" Hair Brown Eyes Brown Born in 1900

# Morph

Morph Management, 36 Jangmun-ro Yongsan-gu Seoul Korea ZIP 04393 | Phone: +82 2 797 7200



photographed by **Angelika Buettner**/[www.angelikabuettner.com](http://www.angelikabuettner.com)  
styled by **Kelly Brown**  
make-up by **Ingeborg/Opus Beauty** using Make Up Forever and Jurlique Skincare  
hair by **Hikari/ArtMix Beauty**  
manicure by **Rachel Shin/ArtMix Beauty** using Kiss products  
modelled by **Anna/NY Models**  
assisted by **Brandon Holmes**  
production by **Effie Tziavas**  
post-production by **Stephanie Wencek**

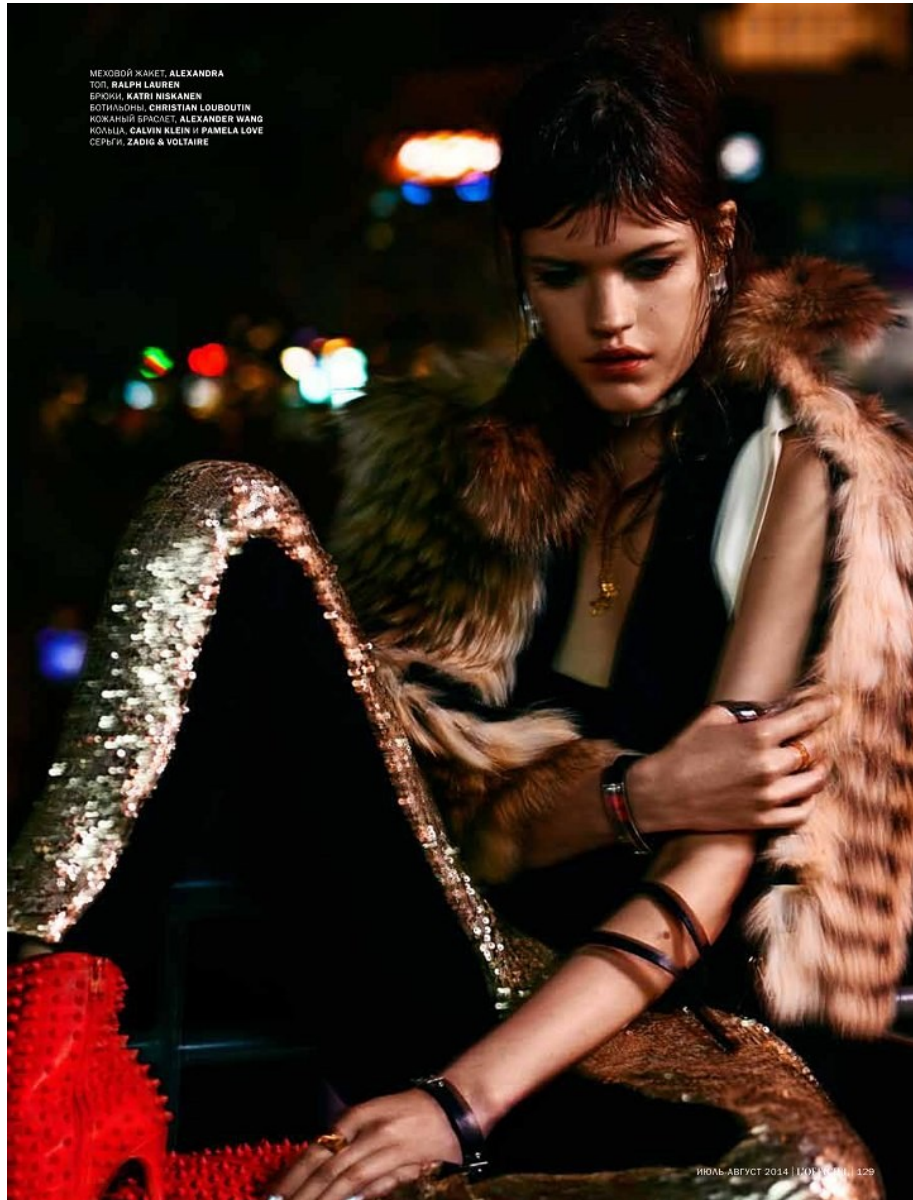
Black mesh bra and underwear set by Eres  
White fur scarf by Adrienne Landau  
Silver horse sculpted sunglasses by Mercura NYC  
Lemon maribou jacket by Erin Fetherston

**ANNA NEVALA (@annajnevala)**

Height 176/5'9.5" Bust 80/31.5" Waist 59/23" Hips 88/34.5" Hair Brown Eyes Brown Born in 1900

# Morph

Morph Management, 36 Jangmun-ro Yongsan-gu Seoul Korea ZIP 04393 | Phone: +82 2 797 7200



ANNA NEVALA (@annajnevala)

Height 176/5'9.5" Bust 80/31.5" Waist 59/23" Hips 88/34.5" Hair Brown Eyes Brown Born in 1900

# Morph

Morph Management, 36 Jangmun-ro Yongsan-gu Seoul Korea ZIP 04393 | Phone: +82 2 797 7200



Pink lace bodysuit with sleeves by Fifi Chachnil  
Pink maribou heels by Fifi Chachnil  
Flower ring by Chelsea Taylor  
Daisy sunglasses by Mercura NYC

**ANNA NEVALA (@annajnevala)**

Height 176/5'9.5" Bust 80/31.5" Waist 59/23" Hips 88/34.5" Hair Brown Eyes Brown Born in 1900

# Morph

Morph Management, 36 Jangmun-ro Yongsan-gu Seoul Korea ZIP 04393 | Phone: +82 2 797 7200



Jacket by Erin Fetherston  
Bra by Miki de Montparnasse  
Silk powder blue panties by Eres  
Cocktail ring by Chelsea Taylor

**ANNA NEVALA (@annajnevala)**

Height 176/5'9.5" Bust 80/31.5" Waist 59/23" Hips 88/34.5" Hair Brown Eyes Brown Born in 1900

# Morph

Morph Management, 36 Jangmun-ro Yongsan-gu Seoul Korea ZIP 04393 | Phone: +82 2 797 7200



ANNA NEVALA (@annajnevala)

Height 176/5'9.5" Bust 80/31.5" Waist 59/23" Hips 88/34.5" Hair Brown Eyes Brown Born in 1900

# Morph

Morph Management, 36 Jangmun-ro Yongsan-gu Seoul Korea ZIP 04393 | Phone: +82 2 797 7200



sessùn

WANTAGENCY.COM



Top, £295, Teatum Jones (teatumjones.com); dress, £4,800, Jason Wu (jasonwustudio.com); apron, £615, Phoebe English (doverstreetmarket.com); net dress (underneath), £265, Hofmann Copenhagen (hofmanncopenhagen.com); choker, £560, and gold plated bronze double carnivore ring, £180, both Annelise Michelson (annelisemichelson.com); MFP ring, £120 and double band rings in gold, rose gold and silver, £78 each, all Maria Francesca Pepe (mfpepe.com); shoes, £575, Jimmy Choo (jimmychoo.com)

ANNA NEVALA (@annajnevala)

Height 176/5'9.5" Bust 80/31.5" Waist 59/23" Hips 88/34.5" Hair Brown Eyes Brown Born in 1900

# Morph

Morph Management, 36 Jangmun-ro Yongsan-gu Seoul Korea ZIP 04393 | Phone: +82 2 797 7200



ANNA NEVALA (@annajnevala)

Height 176/5'9.5" Bust 80/31.5" Waist 59/23" Hips 88/34.5" Hair Brown Eyes Brown Born in 1900



# Morph

Morph Management, 36 Jangmun-ro Yongsan-gu Seoul Korea ZIP 04393 | Phone: +82 2 797 7200



## FRONT AND TOP

*Photography* KAY SMITH  
*Styling* AURORE DONGUY

Title page: top ZANA BAYNE for Mise en Cage, Right: Jacket CLARISSE HIERAIX, necklace ZANA BAYNE for Mise en Cage, pants TRES BONJOUR for Mise en Cage, Left: coat WANDA NYLON, bra TATU COUTURE for Mise en Cage, panties CA-DOLLE, bag & necklace MELLERIO, shoes VERSACE

ANNA NEVALA (@annajnevala)

Height 176/5'9.5" Bust 80/31.5" Waist 59/23" Hips 88/34.5" Hair Brown Eyes Brown Born in 1900

# Morph

Morph Management, 36 Jangmun-ro Yongsan-gu Seoul Korea ZIP 04393 | Phone: +82 2 797 7200



ANNA NEVALA (@annajnevala)

Height 176/5'9.5" Bust 80/31.5" Waist 59/23" Hips 88/34.5" Hair Brown Eyes Brown Born in 1900

# Morph

Morph Management, 36 Jangmun-ro Yongsan-gu Seoul Korea ZIP 04393 | Phone: +82 2 797 7200



ANNA NEVALA (@annajnevala)

Height 176/5'9.5" Bust 80/31.5" Waist 59/23" Hips 88/34.5" Hair Brown Eyes Brown Born in 1900

# Morph

Morph Management, 36 Jangmun-ro Yongsan-gu Seoul Korea ZIP 04393 | Phone: +82 2 797 7200



ANNA NEVALA (@annajnevala)

Height 176/5'9.5" Bust 80/31.5" Waist 59/23" Hips 88/34.5" Hair Brown Eyes Brown Born in 1900

# Morph

Morph Management, 36 Jangmun-ro Yongsan-gu Seoul Korea ZIP 04393 | Phone: +82 2 797 7200



ANNA NEVALA (@annajnevala)

Height 176/5'9.5" Bust 80/31.5" Waist 59/23" Hips 88/34.5" Hair Brown Eyes Brown Born in 1900

# Morph

Morph Management, 36 Jangmun-ro Yongsan-gu Seoul Korea ZIP 04393 | Phone: +82 2 797 7200

HERBSTMODE



ANNA NEVALA (@annajnevala)

Height 176/5'9.5" Bust 80/31.5" Waist 59/23" Hips 88/34.5" Hair Brown Eyes Brown Born in 1900

# Morph

Morph Management, 36 Jangmun-ro Yongsan-gu Seoul Korea ZIP 04393 | Phone: +82 2 797 7200

## HERBSTMODE



**ANNA NEVALA (@annajnevala)**

Height 176/5'9.5" Bust 80/31.5" Waist 59/23" Hips 88/34.5" Hair Brown Eyes Brown Born in 1900

# Morph

Morph Management, 36 Jangmun-ro Yongsan-gu Seoul Korea ZIP 04393 | Phone: +82 2 797 7200



ANNA NEVALA (@annajnevala)

Height 176/5'9.5" Bust 80/31.5" Waist 59/23" Hips 88/34.5" Hair Brown Eyes Brown Born in 1900



# Morph

Morph Management, 36 Jangmun-ro Yongsan-gu Seoul Korea ZIP 04393 | Phone: +82 2 797 7200



ANNA NEVALA (@annajnevala)

Height 176/5'9.5" Bust 80/31.5" Waist 59/23" Hips 88/34.5" Hair Brown Eyes Brown Born in 1900