

Morph

Morph Management, 36 Jangmun-ro Yongsan-gu Seoul Korea ZIP 04393 | Phone: +82 2 797 7200



MARIIA GOLOMUZDOVA (@may_g17)

Height 172/5'7.5" Bust 84/33" Waist 59/23" Hips 87/34.5" Hair Dark Blonde Eyes Blue Born in 2002

Morph

Morph Management, 36 Jangmun-ro Yongsan-gu Seoul Korea ZIP 04393 | Phone: +82 2 797 7200



MARIIA GOLOMUZDOVA (@may_g17)

Height 172/5'7.5" Bust 84/33" Waist 59/23" Hips 87/34.5" Hair Dark Blonde Eyes Blue Born in 2002

Morph

Morph Management, 36 Jangmun-ro Yongsan-gu Seoul Korea ZIP 04393 | Phone: +82 2 797 7200



MARIIA GOLOMUZDOVA (@may_g17)

Height 172/5'7.5" Bust 84/33" Waist 59/23" Hips 87/34.5" Hair Dark Blonde Eyes Blue Born in 2002

Morph

Morph Management, 36 Jangmun-ro Yongsan-gu Seoul Korea ZIP 04393 | Phone: +82 2 797 7200



MARIIA GOLOMUZDOVA (@may_g17)

Height 172/5'7.5" Bust 84/33" Waist 59/23" Hips 87/34.5" Hair Dark Blonde Eyes Blue Born in 2002

Morph

Morph Management, 36 Jangmun-ro Yongsan-gu Seoul Korea ZIP 04393 | Phone: +82 2 797 7200



MARIIA GOLOMUZDOVA (@may_g17)

Height 172/5'7.5" Bust 84/33" Waist 59/23" Hips 87/34.5" Hair Dark Blonde Eyes Blue Born in 2002

Morph

Morph Management, 36 Jangmun-ro Yongsan-gu Seoul Korea ZIP 04393 | Phone: +82 2 797 7200



MARIIA GOLOMUZDOVA (@may_g17)

Height 172/5'7.5" Bust 84/33" Waist 59/23" Hips 87/34.5" Hair Dark Blonde Eyes Blue Born in 2002

Morph

Morph Management, 36 Jangmun-ro Yongsan-gu Seoul Korea ZIP 04393 | Phone: +82 2 797 7200



MARIIA GOLOMUZDOVA (@may_g17)

Height 172/5'7.5" Bust 84/33" Waist 59/23" Hips 87/34.5" Hair Dark Blonde Eyes Blue Born in 2002

Morph

Morph Management, 36 Jangmun-ro Yongsan-gu Seoul Korea ZIP 04393 | Phone: +82 2 797 7200



MARIIA GOLOMUZDOVA (@may_g17)

Height 172/5'7.5" Bust 84/33" Waist 59/23" Hips 87/34.5" Hair Dark Blonde Eyes Blue Born in 2002

Morph

Morph Management, 36 Jangmun-ro Yongsan-gu Seoul Korea ZIP 04393 | Phone: +82 2 797 7200



MARIIA GOLOMUZDOVA (@may_g17)

Height 172/5'7.5" Bust 84/33" Waist 59/23" Hips 87/34.5" Hair Dark Blonde Eyes Blue Born in 2002

Morph

Morph Management, 36 Jangmun-ro Yongsan-gu Seoul Korea ZIP 04393 | Phone: +82 2 797 7200



MARIIA GOLOMUZDOVA (@may_g17)

Height 172/5'7.5" Bust 84/33" Waist 59/23" Hips 87/34.5" Hair Dark Blonde Eyes Blue Born in 2002

Morph

Morph Management, 36 Jangmun-ro Yongsan-gu Seoul Korea ZIP 04393 | Phone: +82 2 797 7200

INVOISE
SHOOTING



colore: 5 gilette LA ROBE
colore: MAGIA DI GAMMA
colore: JIMMY CHOO

62



colore: PINKO
colore: PONAMALA
colore: LA ROBE
colore: MAGIA DI GAMMA

MARIIA GOLOMUZDOVA (@may_g17)

Height 172/5'7.5" Bust 84/33" Waist 59/23" Hips 87/34.5" Hair Dark Blonde Eyes Blue Born in 2002

Morph

Morph Management, 36 Jangmun-ro Yongsan-gu Seoul Korea ZIP 04393 | Phone: +82 2 797 7200



MARIIA GOLOMUZDOVA (@may_g17)

Height 172/5'7.5" Bust 84/33" Waist 59/23" Hips 87/34.5" Hair Dark Blonde Eyes Blue Born in 2002

Morph

Morph Management, 36 Jangmun-ro Yongsan-gu Seoul Korea ZIP 04393 | Phone: +82 2 797 7200



MARIIA GOLOMUZDOVA (@may_g17)

Height 172/5'7.5" Bust 84/33" Waist 59/23" Hips 87/34.5" Hair Dark Blonde Eyes Blue Born in 2002

Morph

Morph Management, 36 Jangmun-ro Yongsan-gu Seoul Korea ZIP 04393 | Phone: +82 2 797 7200



MARIIA GOLOMUZDOVA (@may_g17)

Height 172/5'7.5" Bust 84/33" Waist 59/23" Hips 87/34.5" Hair Dark Blonde Eyes Blue Born in 2002

Morph

Morph Management, 36 Jangmun-ro Yongsan-gu Seoul Korea ZIP 04393 | Phone: +82 2 797 7200



MARIIA GOLOMUZDOVA (@may_g17)

Height 172/5'7.5" Bust 84/33" Waist 59/23" Hips 87/34.5" Hair Dark Blonde Eyes Blue Born in 2002

Morph

Morph Management, 36 Jangmun-ro Yongsan-gu Seoul Korea ZIP 04393 | Phone: +82 2 797 7200

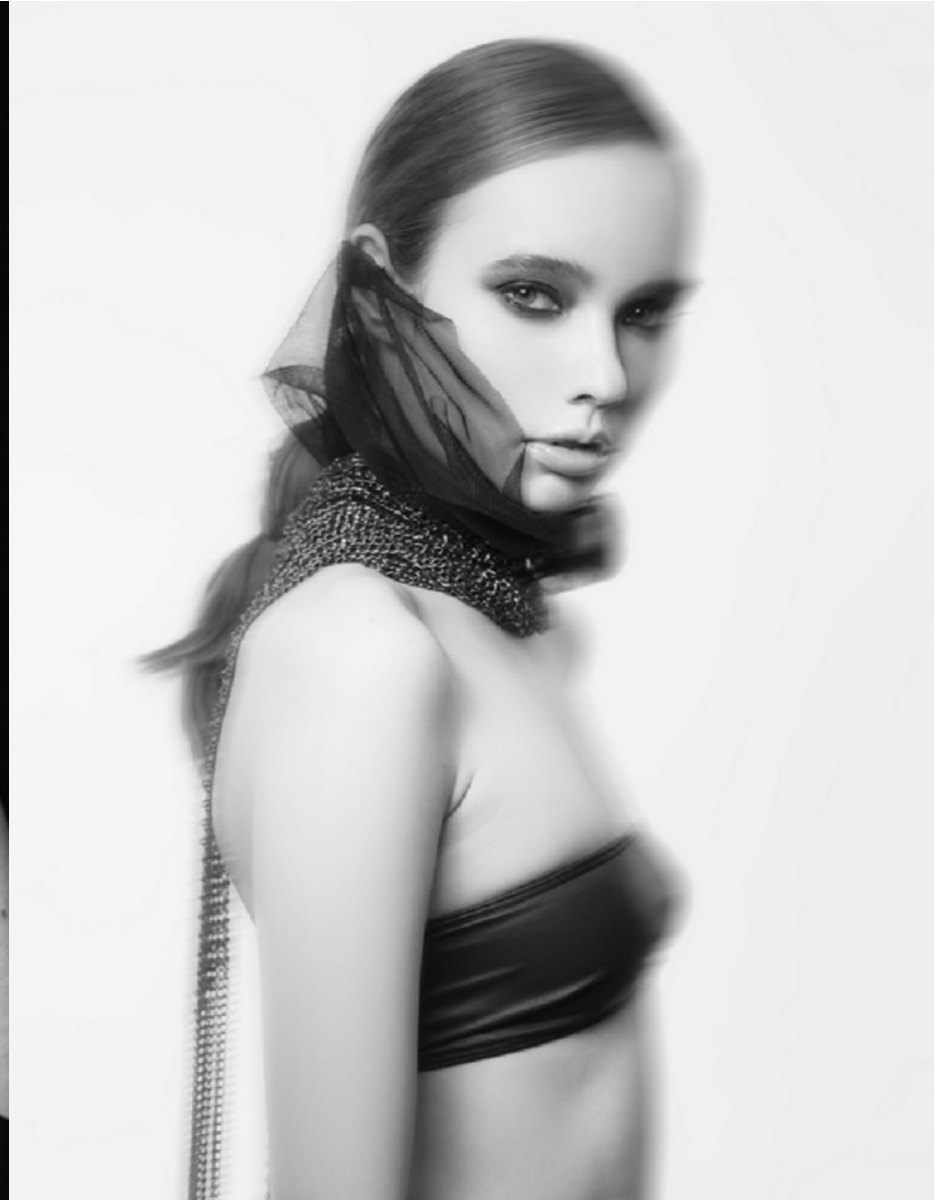


MARIIA GOLOMUZDOVA (@may_g17)

Height 172/5'7.5" Bust 84/33" Waist 59/23" Hips 87/34.5" Hair Dark Blonde Eyes Blue Born in 2002

Morph

Morph Management, 36 Jangmun-ro Yongsan-gu Seoul Korea ZIP 04393 | Phone: +82 2 797 7200



MARIIA GOLOMUZDOVA (@may_g17)

Height 172/5'7.5" Bust 84/33" Waist 59/23" Hips 87/34.5" Hair Dark Blonde Eyes Blue Born in 2002

Morph

Morph Management, 36 Jangmun-ro Yongsan-gu Seoul Korea ZIP 04393 | Phone: +82 2 797 7200



MARIIA GOLOMUZDOVA (@may_g17)

Height 172/5'7.5" Bust 84/33" Waist 59/23" Hips 87/34.5" Hair Dark Blonde Eyes Blue Born in 2002

Morph

Morph Management, 36 Jangmun-ro Yongsan-gu Seoul Korea ZIP 04393 | Phone: +82 2 797 7200



MARIIA GOLOMUZDOVA (@may_g17)

Height 172/5'7.5" Bust 84/33" Waist 59/23" Hips 87/34.5" Hair Dark Blonde Eyes Blue Born in 2002

Morph

Morph Management, 36 Jangmun-ro Yongsan-gu Seoul Korea ZIP 04393 | Phone: +82 2 797 7200



MARIIA GOLOMUZDOVA (@may_g17)

Height 172/5'7.5" Bust 84/33" Waist 59/23" Hips 87/34.5" Hair Dark Blonde Eyes Blue Born in 2002

Morph

Morph Management, 36 Jangmun-ro Yongsan-gu Seoul Korea ZIP 04393 | Phone: +82 2 797 7200



MARIIA GOLOMUZDOVA (@may_g17)

Height 172/5'7.5" Bust 84/33" Waist 59/23" Hips 87/34.5" Hair Dark Blonde Eyes Blue Born in 2002

Morph

Morph Management, 36 Jangmun-ro Yongsan-gu Seoul Korea ZIP 04393 | Phone: +82 2 797 7200

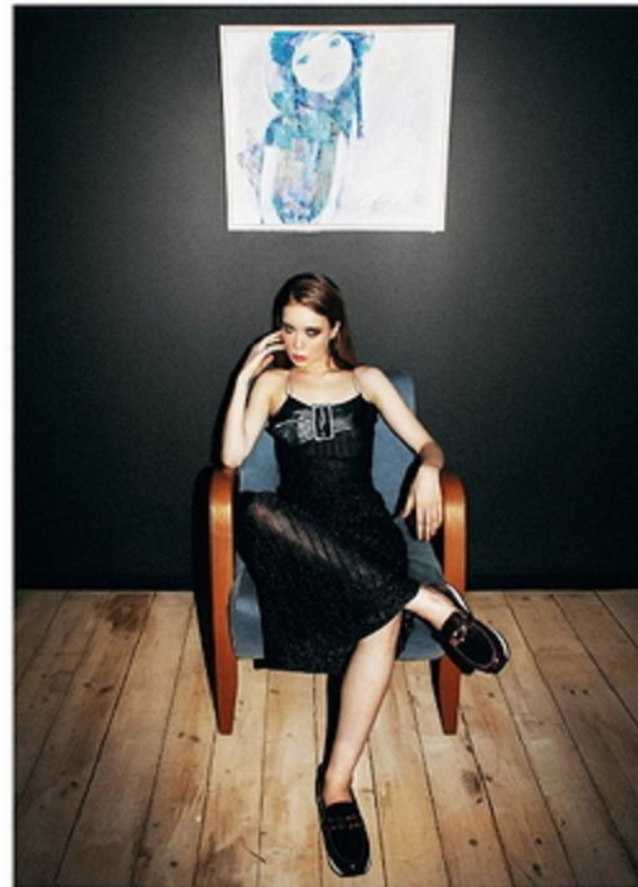


MARIIA GOLOMUZDOVA (@may_g17)

Height 172/5'7.5" Bust 84/33" Waist 59/23" Hips 87/34.5" Hair Dark Blonde Eyes Blue Born in 2002

Morph

Morph Management, 36 Jangmun-ro Yongsan-gu Seoul Korea ZIP 04393 | Phone: +82 2 797 7200



dress & belt SHOWROOM DKROOM; shoes ALDO

MARIIA GOLOMUZDOVA (@may_g17)

Height 172/5'7.5" Bust 84/33" Waist 59/23" Hips 87/34.5" Hair Dark Blonde Eyes Blue Born in 2002

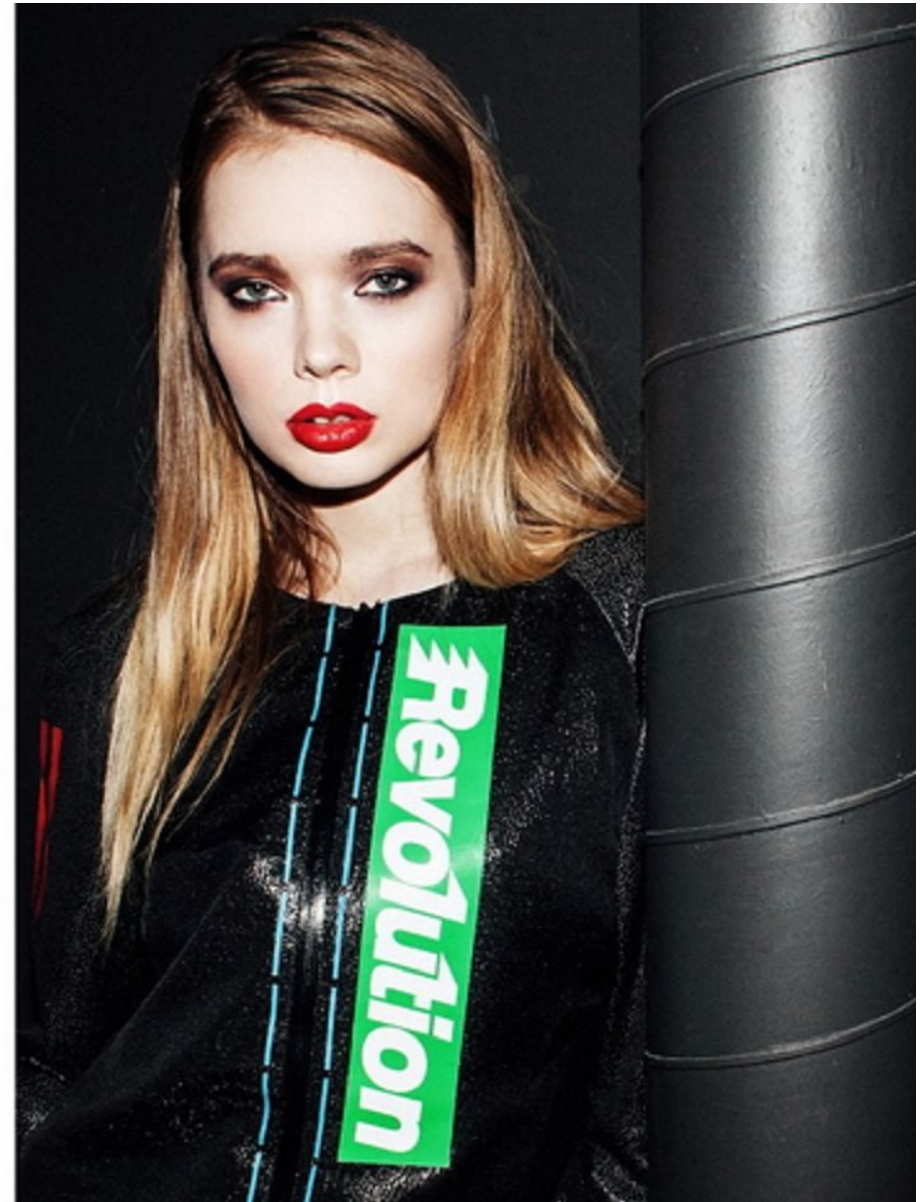
Morph

Morph Management, 36 Jangmun-ro Yongsan-gu Seoul Korea ZIP 04393 | Phone: +82 2 797 7200

INVØISE
SHOOTING



©2016 MARC BY MARC JACOBS



MARIIA GOLOMUZDOVA (@may_g17)

Height 172/5'7.5" Bust 84/33" Waist 59/23" Hips 87/34.5" Hair Dark Blonde Eyes Blue Born in 2002

Morph

Morph Management, 36 Jangmun-ro Yongsan-gu Seoul Korea ZIP 04393 | Phone: +82 2 797 7200

INVØISE
SHOOTING



SHIPS
GALLERY

photographer | MAKSIM SERIKOW
model | MARIIA GOLOMUZDOVA @figaro
makeup | IRINA POPOVA
style | DENIS CHECHKOV
location | ZART GALLERY



gloves & knit dress SHOWROOM DKROOM;
glasses & shoes FURLA

MARIIA GOLOMUZDOVA (@may_g17)

Height 172/5'7.5" Bust 84/33" Waist 59/23" Hips 87/34.5" Hair Dark Blonde Eyes Blue Born in 2002

Morph

Morph Management, 36 Jangmun-ro Yongsan-gu Seoul Korea ZIP 04393 | Phone: +82 2 797 7200



MARIIA GOLOMUZDOVA (@may_g17)

Height 172/5'7.5" Bust 84/33" Waist 59/23" Hips 87/34.5" Hair Dark Blonde Eyes Blue Born in 2002

Morph

Morph Management, 36 Jangmun-ro Yongsan-gu Seoul Korea ZIP 04393 | Phone: +82 2 797 7200



MARIIA GOLOMUZDOVA (@may_g17)

Height 172/5'7.5" Bust 84/33" Waist 59/23" Hips 87/34.5" Hair Dark Blonde Eyes Blue Born in 2002

Morph

Morph Management, 36 Jangmun-ro Yongsan-gu Seoul Korea ZIP 04393 | Phone: +82 2 797 7200



MARIIA GOLOMUZDOVA (@may_g17)

Height 172/5'7.5" Bust 84/33" Waist 59/23" Hips 87/34.5" Hair Dark Blonde Eyes Blue Born in 2002

Morph

Morph Management, 36 Jangmun-ro Yongsan-gu Seoul Korea ZIP 04393 | Phone: +82 2 797 7200



MARIIA GOLOMUZDOVA (@may_g17)

Height 172/5'7.5" Bust 84/33" Waist 59/23" Hips 87/34.5" Hair Dark Blonde Eyes Blue Born in 2002

Morph

Morph Management, 36 Jangmun-ro Yongsan-gu Seoul Korea ZIP 04393 | Phone: +82 2 797 7200



Eberjey (エバージェイ) というブランドは、
1996年にカタログ販売の下着メーカーとしてはじまり、
その後マイアミ、ニューヨークへの店舗進出を果たし、
その後バーニーズ・ニューヨーク、サクス、ニーマンマーカス、
ノードストローム等の高級デパートでの取扱がはじまり、
イギリスのハロッズなどでも販売されている注目のブランドです。
日本でもバーニーズ・ニューヨークなど取り扱われています。

MARIIA GOLOMUZDOVA (@may_g17)

Height 172/5'7.5" Bust 84/33" Waist 59/23" Hips 87/34.5" Hair Dark Blonde Eyes Blue Born in 2002

Morph

Morph Management, 36 Jangmun-ro Yongsan-gu Seoul Korea ZIP 04393 | Phone: +82 2 797 7200



MARIIA GOLOMUZDOVA (@may_g17)

Height 172/5'7.5" Bust 84/33" Waist 59/23" Hips 87/34.5" Hair Dark Blonde Eyes Blue Born in 2002

Morph

Morph Management, 36 Jangmun-ro Yongsan-gu Seoul Korea ZIP 04393 | Phone: +82 2 797 7200



MARIIA GOLOMUZDOVA (@may_g17)

Height 172/5'7.5" Bust 84/33" Waist 59/23" Hips 87/34.5" Hair Dark Blonde Eyes Blue Born in 2002

Morph

Morph Management, 36 Jangmun-ro Yongsan-gu Seoul Korea ZIP 04393 | Phone: +82 2 797 7200

Echoes & Reflections

*Photographer: Yulia Kovaleva
Fashion Designer: Elmira Markes
Model: Maria Golomuzdova
Makeup Artist: Yulia Arzbanova
Wardrobe Stylist: Anastasia Borzova
Clothing: Elmira Markes, Zara, Mango.*



MARIIA GOLOMUZDOVA (@may_g17)

Height 172/5'7.5" Bust 84/33" Waist 59/23" Hips 87/34.5" Hair Dark Blonde Eyes Blue Born in 2002

Morph

Morph Management, 36 Jangmun-ro Yongsan-gu Seoul Korea ZIP 04393 | Phone: +82 2 797 7200

FASHION



FASHION



8 ELEGANT

ELEGANT 11

MARIIA GOLOMUZDOVA (@may_g17)

Height 172/5'7.5" Bust 84/33" Waist 59/23" Hips 87/34.5" Hair Dark Blonde Eyes Blue Born in 2002

Morph

Morph Management, 36 Jangmun-ro Yongsan-gu Seoul Korea ZIP 04393 | Phone: +82 2 797 7200



MARIIA GOLOMUZDOVA (@may_g17)

Height 172/5'7.5" Bust 84/33" Waist 59/23" Hips 87/34.5" Hair Dark Blonde Eyes Blue Born in 2002