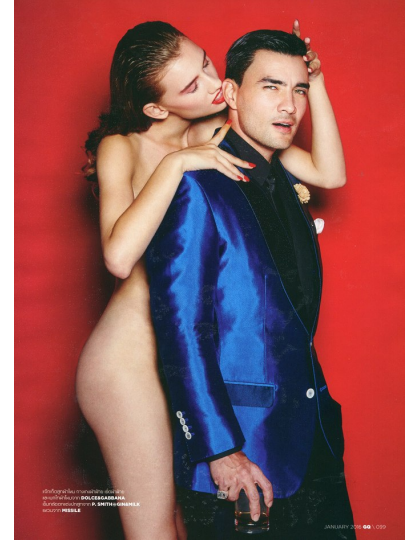
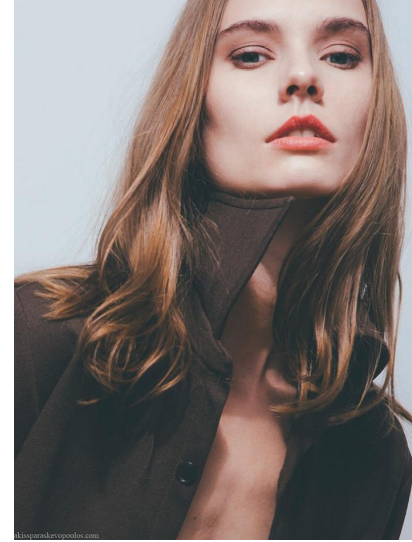


Morph

Morph Management, 36 Jangmun-ro Yongsan-gu Seoul Korea ZIP 04393 | Phone: +82 2 797 7200



NATALIA KUCINSKA (@nat_qcinska)

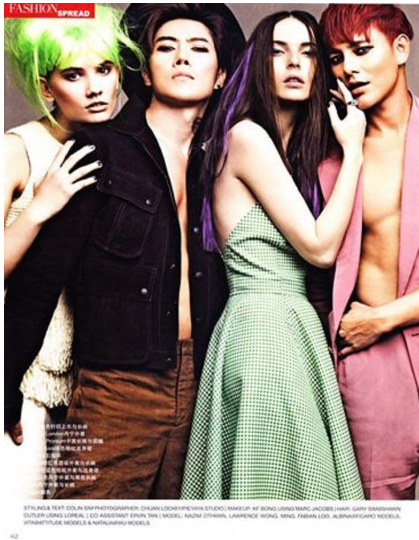
Height 175/5'9" Bust 86/34" Waist 61/24" Hips 88/34.5" Hair Blonde Eyes Blue/Green Born in 1993

Morph

Morph Management, 36 Jangmun-ro Yongsan-gu Seoul Korea ZIP 04393 | Phone: +82 2 797 7200

ANOTHER
EARTH
EARTH
EARTH
EARTH

PHOTOGRAPHY & STYLING: MELBA SEMPLIKA
HAIR: MARLA LUTHER
MAKEUP: SARAH Y. FINE MODELS AGENCY



NATALIA KUCINSKA (@nat_qcinska)

Height 175/5'9" Bust 86/34" Waist 61/24" Hips 88/34.5" Hair Blonde Eyes Blue/Green Born in 1993

Morph

Morph Management, 36 Jangmun-ro Yongsan-gu Seoul Korea ZIP 04393 | Phone: +82 2 797 7200



VASSILIKI CHARITOU



NATALIA KUCINSKA (@nat_qcinska)

Height 175/5'9" Bust 86/34" Waist 61/24" Hips 88/34.5" Hair Blonde Eyes Blue/Green Born in 1993

Morph

Morph Management, 36 Jangmun-ro Yongsan-gu Seoul Korea ZIP 04393 | Phone: +82 2 797 7200

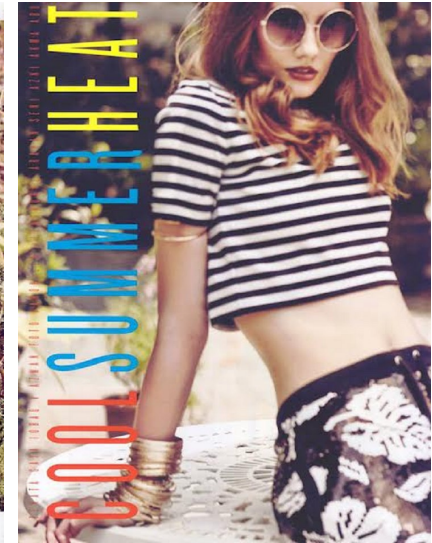


NATALIA KUCINSKA (@nat_qcinska)

Height 175/5'9" Bust 86/34" Waist 61/24" Hips 88/34.5" Hair Blonde Eyes Blue/Green Born in 1993

Morph

Morph Management, 36 Jangmun-ro Yongsan-gu Seoul Korea ZIP 04393 | Phone: +82 2 797 7200

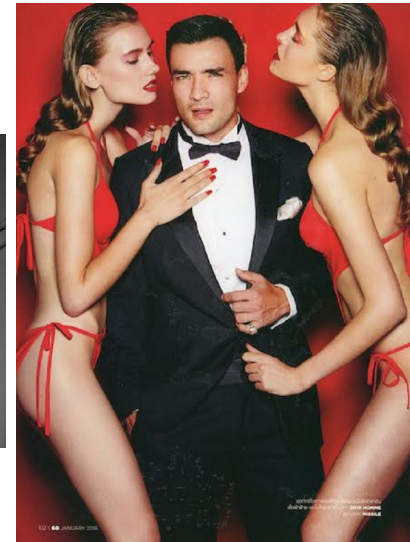
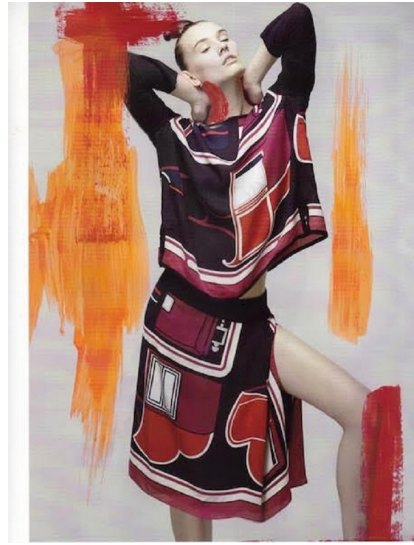


NATALIA KUCINSKA (@nat_qcinska)

Height 175/5'9" Bust 86/34" Waist 61/24" Hips 88/34.5" Hair Blonde Eyes Blue/Green Born in 1993

Morph

Morph Management, 36 Jangmun-ro Yongsan-gu Seoul Korea ZIP 04393 | Phone: +82 2 797 7200

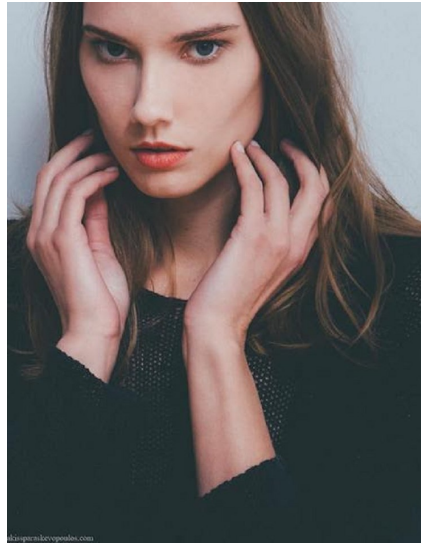


NATALIA KUCINSKA (@nat_qcinska)

Height 175/5'9" Bust 86/34" Waist 61/24" Hips 88/34.5" Hair Blonde Eyes Blue/Green Born in 1993

Morph

Morph Management, 36 Jangmun-ro Yongsan-gu Seoul Korea ZIP 04393 | Phone: +82 2 797 7200



NATALIA KUCINSKA (@nat_qcinska)

Height 175/5'9" Bust 86/34" Waist 61/24" Hips 88/34.5" Hair Blonde Eyes Blue/Green Born in 1993