

Morph

Morph Management, 36 Jangmun-ro Yongsan-gu Seoul Korea ZIP 04393 | Phone: +82 2 797 7200



ANASTASIA KNAUB

Height 175/5'9" Bust 83/32.5" Waist 60/23.5" Hips 88/34.5" Hair Dark Blonde Eyes Brown Born in 2000

Morph

Morph Management, 36 Jangmun-ro Yongsan-gu Seoul Korea ZIP 04393 | Phone: +82 2 797 7200

Hair Solution 魔发时刻 COSMO

刘海配对人美百倍

编辑: 田原文 (Tomonori) 摄影: 陈俊 (Chen Jun) 化妆: 发型: 谢礼 (谢田田) Styling: 徐新 (徐新) 造型助理: Chen 模特: Anna (Anna) 摄影: Adrien (Adrien) 服装: 黄色丝质衬衫 Chris by Christopher Bu 粉色耳饰 Yvmin

所以在下定决心下剪之前,不妨先参考以下指导意见,

才能达到最佳效果。

要知道,不同的脸型发型对应不同的刘海样式,

想来点惊艳又与众不同又怕剪错拉低颜值?

嫌满大街的空气刘海太普通又甜腻,

今年秋冬不难发现刘海又一跃成为发型主角。

黄色丝质衬衫 Chris by Christopher Bu
粉色耳饰 Yvmin

ANASTASIA KNAUB

Height 175/5'9" Bust 83/32.5" Waist 60/23.5" Hips 88/34.5" Hair Dark Blonde Eyes Brown Born in 2000

Morph

Morph Management, 36 Jangmun-ro Yongsan-gu Seoul Korea ZIP 04393 | Phone: +82 2 797 7200



ANASTASIA KNAUB

Height 175/5'9" Bust 83/32.5" Waist 60/23.5" Hips 88/34.5" Hair Dark Blonde Eyes Brown Born in 2000

Morph

Morph Management, 36 Jangmun-ro Yongsan-gu Seoul Korea ZIP 04393 | Phone: +82 2 797 7200



ANASTASIA KNAUB

Height 175/5'9" Bust 83/32.5" Waist 60/23.5" Hips 88/34.5" Hair Dark Blonde Eyes Brown Born in 2000

Morph

Morph Management, 36 Jangmun-ro Yongsan-gu Seoul Korea ZIP 04393 | Phone: +82 2 797 7200



ANASTASIA KNAUB

Height 175/5'9" Bust 83/32.5" Waist 60/23.5" Hips 88/34.5" Hair Dark Blonde Eyes Brown Born in 2000

Morph

Morph Management, 36 Jangmun-ro Yongsan-gu Seoul Korea ZIP 04393 | Phone: +82 2 797 7200



ANASTASIA KNAUB

Height 175/5'9" Bust 83/32.5" Waist 60/23.5" Hips 88/34.5" Hair Dark Blonde Eyes Brown Born in 2000

Morph

Morph Management, 36 Jangmun-ro Yongsan-gu Seoul Korea ZIP 04393 | Phone: +82 2 797 7200



ANASTASIA KNAUB

Height 175/5'9" Bust 83/32.5" Waist 60/23.5" Hips 88/34.5" Hair Dark Blonde Eyes Brown Born in 2000

Morph

Morph Management, 36 Jangmun-ro Yongsan-gu Seoul Korea ZIP 04393 | Phone: +82 2 797 7200



ANASTASIA KNAUB

Height 175/5'9" Bust 83/32.5" Waist 60/23.5" Hips 88/34.5" Hair Dark Blonde Eyes Brown Born in 2000

Morph

Morph Management, 36 Jangmun-ro Yongsan-gu Seoul Korea ZIP 04393 | Phone: +82 2 797 7200



ANASTASIA KNAUB

Height 175/5'9" Bust 83/32.5" Waist 60/23.5" Hips 88/34.5" Hair Dark Blonde Eyes Brown Born in 2000

Morph

Morph Management, 36 Jangmun-ro Yongsan-gu Seoul Korea ZIP 04393 | Phone: +82 2 797 7200



ANASTASIA KNAUB

Height 175/5'9" Bust 83/32.5" Waist 60/23.5" Hips 88/34.5" Hair Dark Blonde Eyes Brown Born in 2000

Morph

Morph Management, 36 Jangmun-ro Yongsan-gu Seoul Korea ZIP 04393 | Phone: +82 2 797 7200



ANASTASIA KNAUB

Height 175/5'9" Bust 83/32.5" Waist 60/23.5" Hips 88/34.5" Hair Dark Blonde Eyes Brown Born in 2000

Morph

Morph Management, 36 Jangmun-ro Yongsan-gu Seoul Korea ZIP 04393 | Phone: +82 2 797 7200



ANASTASIA KNAUB

Height 175/5'9" Bust 83/32.5" Waist 60/23.5" Hips 88/34.5" Hair Dark Blonde Eyes Brown Born in 2000

Morph

Morph Management, 36 Jangmun-ro Yongsan-gu Seoul Korea ZIP 04393 | Phone: +82 2 797 7200



ANASTASIA KNAUB

Height 175/5'9" Bust 83/32.5" Waist 60/23.5" Hips 88/34.5" Hair Dark Blonde Eyes Brown Born in 2000

Morph

Morph Management, 36 Jangmun-ro Yongsan-gu Seoul Korea ZIP 04393 | Phone: +82 2 797 7200



ANASTASIA KNAUB

Height 175/5'9" Bust 83/32.5" Waist 60/23.5" Hips 88/34.5" Hair Dark Blonde Eyes Brown Born in 2000

Morph

Morph Management, 36 Jangmun-ro Yongsan-gu Seoul Korea ZIP 04393 | Phone: +82 2 797 7200



ANASTASIA KNAUB

Height 175/5'9" Bust 83/32.5" Waist 60/23.5" Hips 88/34.5" Hair Dark Blonde Eyes Brown Born in 2000

Morph

Morph Management, 36 Jangmun-ro Yongsan-gu Seoul Korea ZIP 04393 | Phone: +82 2 797 7200



ANASTASIA KNAUB

Height 175/5'9" Bust 83/32.5" Waist 60/23.5" Hips 88/34.5" Hair Dark Blonde Eyes Brown Born in 2000

Morph

Morph Management, 36 Jangmun-ro Yongsan-gu Seoul Korea ZIP 04393 | Phone: +82 2 797 7200



ANASTASIA KNAUB

Height 175/5'9" Bust 83/32.5" Waist 60/23.5" Hips 88/34.5" Hair Dark Blonde Eyes Brown Born in 2000

Morph

Morph Management, 36 Jangmun-ro Yongsan-gu Seoul Korea ZIP 04393 | Phone: +82 2 797 7200



ANASTASIA KNAUB

Height 175/5'9" Bust 83/32.5" Waist 60/23.5" Hips 88/34.5" Hair Dark Blonde Eyes Brown Born in 2000

Morph

Morph Management, 36 Jangmun-ro Yongsan-gu Seoul Korea ZIP 04393 | Phone: +82 2 797 7200



ANASTASIA KNAUB

Height 175/5'9" Bust 83/32.5" Waist 60/23.5" Hips 88/34.5" Hair Dark Blonde Eyes Brown Born in 2000

Morph

Morph Management, 36 Jangmun-ro Yongsan-gu Seoul Korea ZIP 04393 | Phone: +82 2 797 7200



ANASTASIA KNAUB

Height 175/5'9" Bust 83/32.5" Waist 60/23.5" Hips 88/34.5" Hair Dark Blonde Eyes Brown Born in 2000

Morph

Morph Management, 36 Jangmun-ro Yongsan-gu Seoul Korea ZIP 04393 | Phone: +82 2 797 7200

COSMO 魔发时刻 | Hair Solution

俏皮超短刘海

看起来有点霸气的短刘海却能意外漂亮,不但能修饰脸型、突出五官,而且多了一丝俏皮,减龄效果也是棒棒哒!

脸型

唯一遗憾的就是,刻意露出额头的超短刘海是比较挑脸型的造型,会让方脸更方,长脸更长,它只能作为心形脸的主场。

发型

搭配俏丽的男孩式短发或齐耳复古发能让超短刘海更加有魅力;如果你是长发,那束起发髻以后搭配这样的短刘海就有几分赫本的风范。

妆容

如此个性的刘海当然要搭配同样古怪少女的妆容,甜美风成熟风统统靠边站,既然露出额头,眉毛和眼睛自然是重点,用眉粉打造出毛茸茸感的粗眉,眼线不能太宽,突出眼神即可,倘若黑发,省略腮红直接红唇就够时髦;如果是染发,就搭配粉色橘色系腮红和唇膏点缀出可爱感。

心机中分刘海

想要留刘海,但脸型不适合,或者觉得与一直追求的精英成熟气质不相符,那么就试试这款中分刘海吧!偶尔垂落下来的几缕发丝更能增添女性的优雅韵味呢!

脸型

中分刘海适合长脸姑娘,长及眼角的刘海是近两年的大热,除了能修饰脸型,还能让你看起来清爽;对于颧骨突出的人,发型师一般建议使用没有刘海的发型去遮盖倒三角形的脸。不过,没有刘海又给人一种土土的感觉,那么不妨试一下把刘海剪短至刚好覆盖两腮的位置,然后微微内卷,这样随意的分线摆脱了古板的印象,既能达到美化脸型的效果又超级时髦!

发型

短发款的中分刘海妩媚知性,再搭配发色,韩范儿十足;若配上长发则一定要加上微微的卷度,除了减龄,还能让人更加性感。

妆容

由于中分刘海会遮挡住一部分脸颊,因此横向拉长,平衡脸部整体线条的眼线就显得尤为重要。腮红在眼下横向轻扫,可尝试低调的珊瑚色。

刘海不油腻才真正提颜值

不管你梳那种类型的刘海,要记住千万别让它们变得油腻。如果刘海变脏粘成一缕一缕的话,就用点头发干洗喷雾,喷雾里的粉末能吸收头发上的油脂,让它们重新顺滑蓬松起来。

经典齐眉刘海

最自然、最不挑脸型且最不易出错的是长度刚好盖过眉毛的长度,搭配短发长发都很挑。

脸型

齐眉刘海很适合长形脸以及前额较宽的人,对于颧骨高或者脸宽的姑娘也是福音,只要让刘海带点自然弧度就好,内卷的弧度和颧骨处与长发的自然衔接,不但遮盖了大部分额头,让脸看起来变小了之外,使脸部轮廓也变得立体起来。

但是这种刘海也并非没有弱点,那就是圆脸最需要避免!不过如果你剪了长直发却另当别论了,发尾处打理出内扣的效果,刘海儿遮住宽额头,也是完全OK的。

发型

齐眉刘海介于眉毛和睫毛之间,用剪刀而非剃刀修剪而成,如果你的头发又厚又直的话,当然也可以试一下厚重齐刘海,头发长度最好不要过肩;如果发质很好或带些微自来卷,就试试束状刘海造型,再搭配染色过的长发,绝对惊艳绝人。

妆容

想让经典齐眉刘海更出彩,纤长睫毛大地色眼影来帮忙,但无论怎样,齐眉刘海的跟大红丝绒唇不搭,否则只能展现最无质感造型了。

发量少星人,必备圆筒梳

发量多的人留齐眉刘海效果会很好,发量少的话会觉得齐刘海过于服帖,想让它显得蓬松饱满的话,可用圆筒梳子将刘海裹着向里卷,并用吹风机由下往上吹风来达到这种效果。



COSMO 推荐:
1. Shiseido 资生堂蓬粉露 168元/150ml
2. Rene Furterer 莱润平衡干洗喷雾 218元/150ml
3. Tsubaki 资生堂修护系列滋养精华护发油 160ml/40元
4. Tangle Teezer 蓬干造型系列 249元



红色高领针织衫 SHUSHU/TONG

ANASTASIA KNAUB

Height 175/5'9" Bust 83/32.5" Waist 60/23.5" Hips 88/34.5" Hair Dark Blonde Eyes Brown Born in 2000

Morph

Morph Management, 36 Jangmun-ro Yongsan-gu Seoul Korea ZIP 04393 | Phone: +82 2 797 7200



ANASTASIA KNAUB

Height 175/5'9" Bust 83/32.5" Waist 60/23.5" Hips 88/34.5" Hair Dark Blonde Eyes Brown Born in 2000

Morph

Morph Management, 36 Jangmun-ro Yongsan-gu Seoul Korea ZIP 04393 | Phone: +82 2 797 7200



ANASTASIA KNAUB

Height 175/5'9" Bust 83/32.5" Waist 60/23.5" Hips 88/34.5" Hair Dark Blonde Eyes Brown Born in 2000

Morph

Morph Management, 36 Jangmun-ro Yongsan-gu Seoul Korea ZIP 04393 | Phone: +82 2 797 7200



ANASTASIA KNAUB

Height 175/5'9" Bust 83/32.5" Waist 60/23.5" Hips 88/34.5" Hair Dark Blonde Eyes Brown Born in 2000

Morph

Morph Management, 36 Jangmun-ro Yongsan-gu Seoul Korea ZIP 04393 | Phone: +82 2 797 7200



STRAPSE

follow your heart, but be quiet for a while first. learn to trust your heart. follow your heart. follow your heart, but be quiet for a while first. learn to trust your heart.

always listen to your heart because even though it's on your left side, it's always right.
Dream what you want to dream, go where you want to go, be what you want to be, because you have only one life and one chance to do all the things you want to do.

Mix and Match
Exclusive designs, endless styles

ANASTASIA KNAUB

Height 175/5'9" Bust 83/32.5" Waist 60/23.5" Hips 88/34.5" Hair Dark Blonde Eyes Brown Born in 2000

Morph

Morph Management, 36 Jangmun-ro Yongsan-gu Seoul Korea ZIP 04393 | Phone: +82 2 797 7200



時尚衣櫥萌物
潮流背帶

**I'M A
PERECT ONE**

休閒俏皮，如今背帶褲“進化”成了各種時尚的款式，只要簡單內搭一件T恤就能時髦出街。背帶的可拆卸設計，提供更多穿搭可能性，可直接把背帶卸下也可將背帶隨意搭在褲腿兩側更顯隨性。

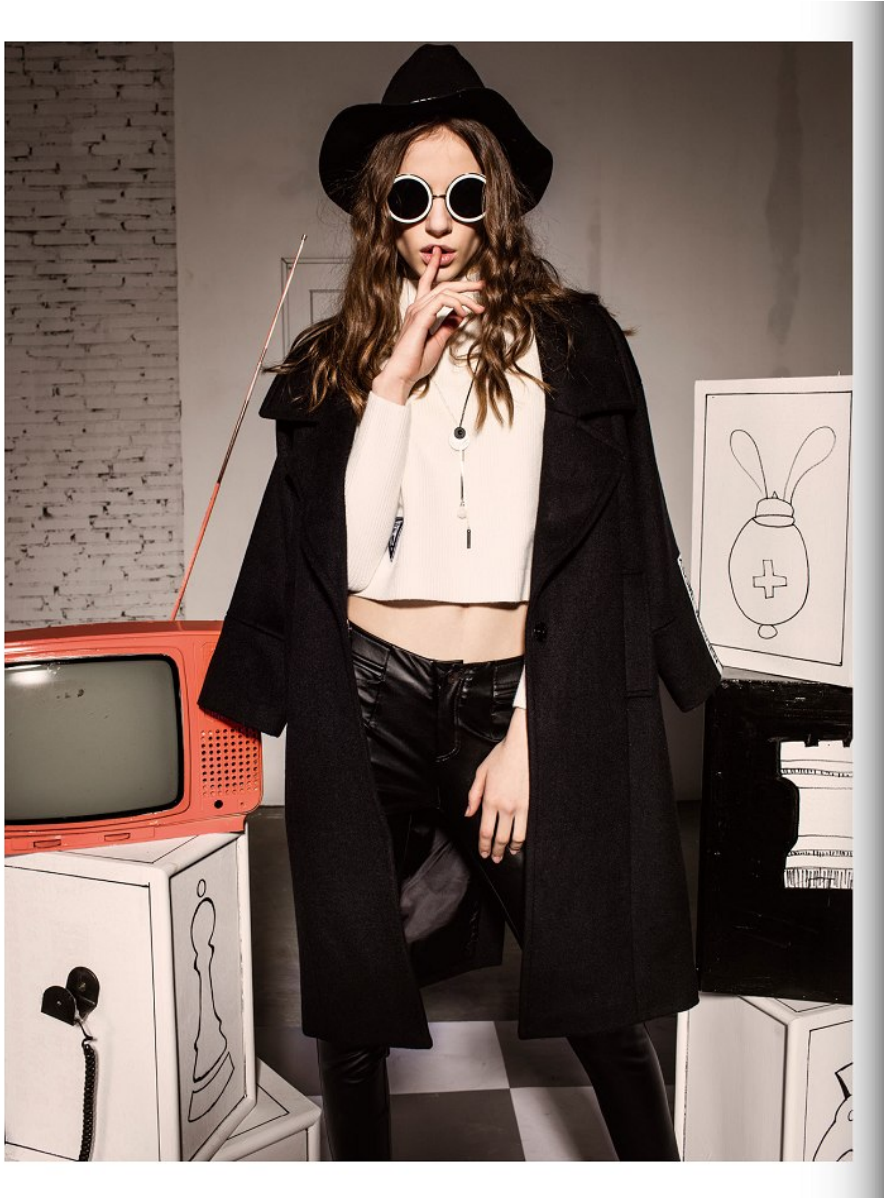


ANASTASIA KNAUB

Height 175/5'9" Bust 83/32.5" Waist 60/23.5" Hips 88/34.5" Hair Dark Blonde Eyes Brown Born in 2000

Morph

Morph Management, 36 Jangmun-ro Yongsan-gu Seoul Korea ZIP 04393 | Phone: +82 2 797 7200



Mix and Match
Exclusive designs, endless styles



ASGIR6

ANASTASIA KNAUB

Height 175/5'9" Bust 83/32.5" Waist 60/23.5" Hips 88/34.5" Hair Dark Blonde Eyes Brown Born in 2000

Morph

Morph Management, 36 Jangmun-ro Yongsan-gu Seoul Korea ZIP 04393 | Phone: +82 2 797 7200



COLLEGE QUEEN

A . S G I R L

everthing shiny

20

16



AUTUMN

/COLLEGE QUEEN/
2016

ANASTASIA KNAUB

Height 175/5'9" Bust 83/32.5" Waist 60/23.5" Hips 88/34.5" Hair Dark Blonde Eyes Brown Born in 2000

Morph

Morph Management, 36 Jangmun-ro Yongsan-gu Seoul Korea ZIP 04393 | Phone: +82 2 797 7200



ANASTASIA KNAUB

Height 175/5'9" Bust 83/32.5" Waist 60/23.5" Hips 88/34.5" Hair Dark Blonde Eyes Brown Born in 2000

Morph

Morph Management, 36 Jangmun-ro Yongsan-gu Seoul Korea ZIP 04393 | Phone: +82 2 797 7200



ANASTASIA KNAUB

Height 175/5'9" Bust 83/32.5" Waist 60/23.5" Hips 88/34.5" Hair Dark Blonde Eyes Brown Born in 2000

Morph

Morph Management, 36 Jangmun-ro Yongsan-gu Seoul Korea ZIP 04393 | Phone: +82 2 797 7200



ANASTASIA KNAUB

Height 175/5'9" Bust 83/32.5" Waist 60/23.5" Hips 88/34.5" Hair Dark Blonde Eyes Brown Born in 2000