

# Morph

Morph Management, 36 Jangmun-ro Yongsan-gu Seoul Korea ZIP 04393 | Phone: +82 2 797 7200



EVA CAVECCHI (@eva\_cavecchi)

Height 178/5'10" Bust 86/34" Waist 62/24.5" Hips 87/34.5" Hair Red Eyes Blue Born in 1998



# Morph

Morph Management, 36 Jangmun-ro Yongsan-gu Seoul Korea ZIP 04393 | Phone: +82 2 797 7200



EVA CAVECCHI (@eva\_cavecchi)

Height 178/5'10" Bust 86/34" Waist 62/24.5" Hips 87/34.5" Hair Red Eyes Blue Born in 1998

# Morph

Morph Management, 36 Jangmun-ro Yongsan-gu Seoul Korea ZIP 04393 | Phone: +82 2 797 7200



EVA CAVECCHI (@eva\_cavecchi)

Height 178/5'10" Bust 86/34" Waist 62/24.5" Hips 87/34.5" Hair Red Eyes Blue Born in 1998



# Morph

Morph Management, 36 Jangmun-ro Yongsan-gu Seoul Korea ZIP 04393 | Phone: +82 2 797 7200



EVA CAVECCHI (@eva\_cavecchi)

Height 178/5'10" Bust 86/34" Waist 62/24.5" Hips 87/34.5" Hair Red Eyes Blue Born in 1998

# Morph

Morph Management, 36 Jangmun-ro Yongsan-gu Seoul Korea ZIP 04393 | Phone: +82 2 797 7200



불행감 있는 캄드 자수 장식이  
고흥스러운 블루 크로켓 드레스는  
**Prada**, 스카리와 손목을 부드럽게  
감싸는, 다이아몬드를 세팅한  
핑크 골드 소재의 세르펜티  
링과 브레이슬릿 모두 **Bulgari**,  
피아시나 에를레 라인에 골드빛  
광채를 얹어줄 디오리빅 스톤렌더  
프레스드 파우더는 **Dior** 제품.



모엘이 입은 블러워 패턴 실크 소재 루피스는 **Gucci** 로즈  
타투를 프린트한 핑크 슈즈는 **Roger Vivier**, 볼드한 골드  
스티드 이어링은 **Salvatore Ferragamo**, 바닥에 놓인 슈즈는  
원목부터 골드 컬러 웨이브 디테일이 유니크한 힐 **Fendi**,  
힐 부분의 골드 장식과 네이비 컬러의 핑크 소재가 고풍스러운  
무아함을 자아내는 케이스업 앰블 부츠 **Prada**, 크리스마스를  
연상시키는 레드 컬러의 주얼 장식 핑크 **Roger Vivier**.

EVA CAVECCHI (@eva\_cavecchi)

Height 178/5'10" Bust 86/34" Waist 62/24.5" Hips 87/34.5" Hair Red Eyes Blue Born in 1998

# Morph

Morph Management, 36 Jangmun-ro Yongsan-gu Seoul Korea ZIP 04393 | Phone: +82 2 797 7200



EVA CAVECCHI (@eva\_cavecchi)

Height 178/5'10" Bust 86/34" Waist 62/24.5" Hips 87/34.5" Hair Red Eyes Blue Born in 1998



# Morph

Morph Management, 36 Jangmun-ro Yongsan-gu Seoul Korea ZIP 04393 | Phone: +82 2 797 7200



EVA CAVECCHI (@eva\_cavecchi)

Height 178/5'10" Bust 86/34" Waist 62/24.5" Hips 87/34.5" Hair Red Eyes Blue Born in 1998

# Morph

Morph Management, 36 Jangmun-ro Yongsan-gu Seoul Korea ZIP 04393 | Phone: +82 2 797 7200



EVA CAVECCHI (@eva\_cavecchi)

Height 178/5'10" Bust 86/34" Waist 62/24.5" Hips 87/34.5" Hair Red Eyes Blue Born in 1998



# Morph

Morph Management, 36 Jangmun-ro Yongsan-gu Seoul Korea ZIP 04393 | Phone: +82 2 797 7200



EVA CAVECCHI (@eva\_cavecchi)

Height 178/5'10" Bust 86/34" Waist 62/24.5" Hips 87/34.5" Hair Red Eyes Blue Born in 1998

# Morph

Morph Management, 36 Jangmun-ro Yongsan-gu Seoul Korea ZIP 04393 | Phone: +82 2 797 7200



Pearl Earrings | CO. RO. STUDIO | corojewels.com

EVA CAVECCHI (@eva\_cavecchi)

Height 178/5'10" Bust 86/34" Waist 62/24.5" Hips 87/34.5" Hair Red Eyes Blue Born in 1998

# Morph

Morph Management, 36 Jangmun-ro Yongsan-gu Seoul Korea ZIP 04393 | Phone: +82 2 797 7200



EVA CAVECCHI (@eva\_cavecchi)

Height 178/5'10" Bust 86/34" Waist 62/24.5" Hips 87/34.5" Hair Red Eyes Blue Born in 1998

# Morph

Morph Management, 36 Jangmun-ro Yongsan-gu Seoul Korea ZIP 04393 | Phone: +82 2 797 7200



EVA CAVECCHI (@eva\_cavecchi)

Height 178/5'10" Bust 86/34" Waist 62/24.5" Hips 87/34.5" Hair Red Eyes Blue Born in 1998

# Morph

Morph Management, 36 Jangmun-ro Yongsan-gu Seoul Korea ZIP 04393 | Phone: +82 2 797 7200



EVA CAVECCHI (@eva\_cavecchi)

Height 178/5'10" Bust 86/34" Waist 62/24.5" Hips 87/34.5" Hair Red Eyes Blue Born in 1998



# Morph

Morph Management, 36 Jangmun-ro Yongsan-gu Seoul Korea ZIP 04393 | Phone: +82 2 797 7200



Earrings | LE MADAMADORE | lemadadore.it



EVA CAVECCHI (@eva\_cavecchi)

Height 178/5'10" Bust 86/34" Waist 62/24.5" Hips 87/34.5" Hair Red Eyes Blue Born in 1998

# Morph

Morph Management, 36 Jangmun-ro Yongsan-gu Seoul Korea ZIP 04393 | Phone: +82 2 797 7200

BEAUTY



*On Facing Page:*  
Foundation: **Make Up For Ever** HD in #115 Ivory  
Blush: **Ben Nye** Theatrical Rouge Palette in Red Brown  
Liner: **Urban Decay** 24/7 Glide on Pencil in Junkie  
Shadow: **Ben Nye** Brilliant Color Palette in Chartreuse and **Ben Nye** Brilliant Metallic Palette in Aztec Gold Bronze  
Mascara: **Urban Decay** Perversion Mascara  
Lips: **Urban Decay** Revolution Lipstick in Streak

*On This Page:*  
Foundation: **Make Up For Ever** HD in #115 Ivory  
Blush: **Ben Nye** Theatrical Rouge Palette in Victorian Rose  
Shadow: **Ben Nye** Brilliant Color Palette in Royal Purple, Amethyst, and Royal Blue  
Mascara: **Urban Decay** Perversion Mascara  
Lips: **Urban Decay** Revolution Lipstick in Anarchy

GLITTER AND GLAM | ISSUE 21 | VEUX | 15

**EVA CAVECCHI (@eva\_cavecchi)**

Height 178/5'10" Bust 86/34" Waist 62/24.5" Hips 87/34.5" Hair Red Eyes Blue Born in 1998

# Morph

Morph Management, 36 Jangmun-ro Yongsan-gu Seoul Korea ZIP 04393 | Phone: +82 2 797 7200



On her: Serpenti necklace in pink gold with alternating mother-of-pearl and pave-set diamond scales, \$88,000; Serpenti double coil bracelet in pink gold with alternating mother-of-pearl and pave-set diamond scales, \$89,500; Serpenti ring in pink gold with mother-of-pearl head and pave-set diamond scales, \$12,800, all by BVLGARI. Long waistcoat with H pleats, and jersey bikini, both by HERMÈS. Reading glasses, by GUCCI.

On him: B.zero1 bangle bracelet in pink gold, \$8,300; and B.zero1 bangle bracelet in white gold, \$8,530, both by BVLGARI. Classic tux short-sleeved tee and original cut boyfriend slim jeans, both by SAINT LAURENT.



On her: Amulette de Cartier necklace in yellow gold with diamonds and onyx; Amulette de Cartier necklace in pink gold and diamonds, \$21,500; and Amulette de Cartier ring in pink gold with diamonds, \$11,300, all by CARTIER. Calfskin zipped bodysuit, from HERMÈS.

On him: Juste un Clou bracelet in pink gold with diamonds, \$20,202; and Juste un Clou ring in pink gold with diamonds, \$3,150, both by CARTIER. Motocross jacket and original cut boyfriend slim jeans, both by SAINT LAURENT.

EVA CAVECCHI (@eva\_cavecchi)

Height 178/5'10" Bust 86/34" Waist 62/24.5" Hips 87/34.5" Hair Red Eyes Blue Born in 1998

# Morph

Morph Management, 36 Jangmun-ro Yongsan-gu Seoul Korea ZIP 04393 | Phone: +82 2 797 7200



EVA CAVECCHI (@eva\_cavecchi)

Height 178/5'10" Bust 86/34" Waist 62/24.5" Hips 87/34.5" Hair Red Eyes Blue Born in 1998

# Morph

Morph Management, 36 Jangmun-ro Yongsan-gu Seoul Korea ZIP 04393 | Phone: +82 2 797 7200



High Jewellery necklace in rose gold with black cultured pearls, tourmalines and diamonds; Precious Temptations ring in white gold with pink quartz, tourmalines and diamonds, both by CHOPARD. Sequined bra-top and reading glasses, both by GUCCI. Swimsuit, from THE LINGERIE SHOP.

Hair & makeup: GREGO OH USING KEVIN MURPHY & MAKE UP FOR EVER. Models EVA/MANNEQUIN & SERGE/AVE



## BIJOUX

107

Photography AIK CHEN  
Styling MATILDA AU

**SPIN SCIENCE**  
The Piaget Possession makes the world go round.

Possession bangle in 18K pink gold with 30 brilliant-cut diamonds, \$7,450; Possession ring in 18K pink gold with 234 brilliant-cut diamonds, \$22,100; and Possession ring in 18K pink gold with 8 brilliant-cut diamonds, \$4,450, all by PIAGET. Over-dyed washed silk jumpsuit, by LOUIS VUITTON.

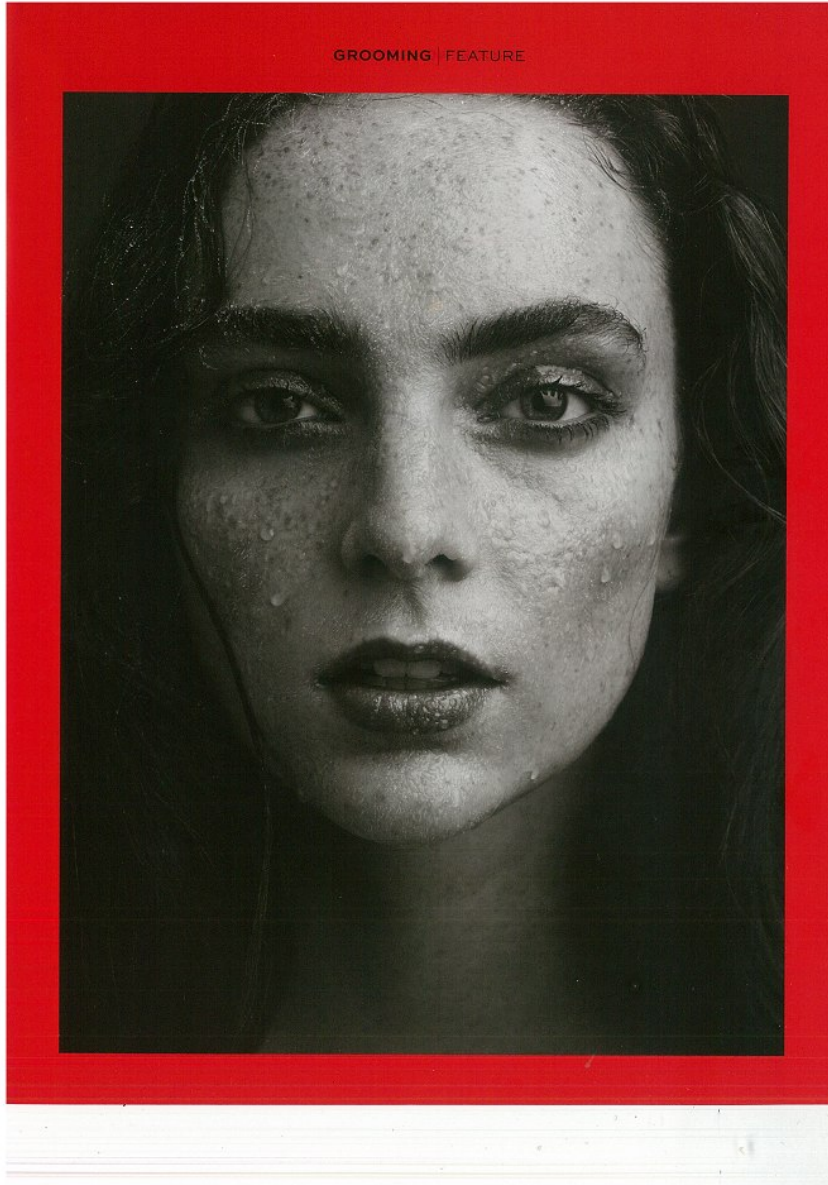
Hair & makeup: GREGO OH USING KEVIN MURPHY & MAKE UP FOR EVER. Models EVA/MANNEQUIN

EVA CAVECCHI (@eva\_cavecchi)

Height 178/5'10" Bust 86/34" Waist 62/24.5" Hips 87/34.5" Hair Red Eyes Blue Born in 1998

# Morph

Morph Management, 36 Jangmun-ro Yongsan-gu Seoul Korea ZIP 04393 | Phone: +82 2 797 7200



EVA CAVECCHI (@eva\_cavecchi)

Height 178/5'10" Bust 86/34" Waist 62/24.5" Hips 87/34.5" Hair Red Eyes Blue Born in 1998

# Morph

Morph Management, 36 Jangmun-ro Yongsan-gu Seoul Korea ZIP 04393 | Phone: +82 2 797 7200



EVA CAVECCHI (@eva\_cavecchi)

Height 178/5'10" Bust 86/34" Waist 62/24.5" Hips 87/34.5" Hair Red Eyes Blue Born in 1998

# Morph

Morph Management, 36 Jangmun-ro Yongsan-gu Seoul Korea ZIP 04393 | Phone: +82 2 797 7200



**EVA CAVECCHI (@eva\_cavecchi)**

Height 178/5'10" Bust 86/34" Waist 62/24.5" Hips 87/34.5" Hair Red Eyes Blue Born in 1998



# Morph

Morph Management, 36 Jangmun-ro Yongsan-gu Seoul Korea ZIP 04393 | Phone: +82 2 797 7200



EVA CAVECCHI (@eva\_cavecchi)

Height 178/5'10" Bust 86/34" Waist 62/24.5" Hips 87/34.5" Hair Red Eyes Blue Born in 1998

# Morph

Morph Management, 36 Jangmun-ro Yongsan-gu Seoul Korea ZIP 04393 | Phone: +82 2 797 7200



EVA CAVECCHI (@eva\_cavecchi)

Height 178/5'10" Bust 86/34" Waist 62/24.5" Hips 87/34.5" Hair Red Eyes Blue Born in 1998

# Morph

Morph Management, 36 Jangmun-ro Yongsan-gu Seoul Korea ZIP 04393 | Phone: +82 2 797 7200



EVA CAVECCHI (@eva\_cavecchi)

Height 178/5'10" Bust 86/34" Waist 62/24.5" Hips 87/34.5" Hair Red Eyes Blue Born in 1998

# Morph

Morph Management, 36 Jangmun-ro Yongsan-gu Seoul Korea ZIP 04393 | Phone: +82 2 797 7200



EVA CAVECCHI (@eva\_cavecchi)

Height 178/5'10" Bust 86/34" Waist 62/24.5" Hips 87/34.5" Hair Red Eyes Blue Born in 1998

# Morph

Morph Management, 36 Jangmun-ro Yongsan-gu Seoul Korea ZIP 04393 | Phone: +82 2 797 7200



EVA CAVECCHI (@eva\_cavecchi)

Height 178/5'10" Bust 86/34" Waist 62/24.5" Hips 87/34.5" Hair Red Eyes Blue Born in 1998

# Morph

Morph Management, 36 Jangmun-ro Yongsan-gu Seoul Korea ZIP 04393 | Phone: +82 2 797 7200



黑色针织材质的印花外套, 皮革质感的黑色手套/Louis Vuitton, 装饰性纽扣的外套/Prada, 黑色丝袜/Miu Miu.



蓝色丝袜/Sportmax, 羽毛领饰/Miu Miu, 装饰性纽扣/Chanel, 黑色丝袜/Miu Miu, 装饰性纽扣/Chanel, 蓝色丝袜/Sportmax, 羽毛领饰/Miu Miu, 装饰性纽扣/Chanel, 黑色丝袜/Miu Miu, 装饰性纽扣/Chanel.

EVA CAVECCHI (@eva\_cavecchi)

Height 178/5'10" Bust 86/34" Waist 62/24.5" Hips 87/34.5" Hair Red Eyes Blue Born in 1998

# Morph

Morph Management, 36 Jangmun-ro Yongsan-gu Seoul Korea ZIP 04393 | Phone: +82 2 797 7200



EVA CAVECCHI (@eva\_cavecchi)

Height 178/5'10" Bust 86/34" Waist 62/24.5" Hips 87/34.5" Hair Red Eyes Blue Born in 1998

# Morph

Morph Management, 36 Jangmun-ro Yongsan-gu Seoul Korea ZIP 04393 | Phone: +82 2 797 7200



EVA CAVECCHI (@eva\_cavecchi)

Height 178/5'10" Bust 86/34" Waist 62/24.5" Hips 87/34.5" Hair Red Eyes Blue Born in 1998