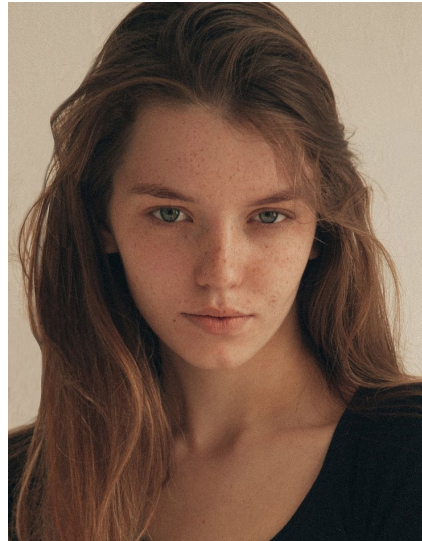
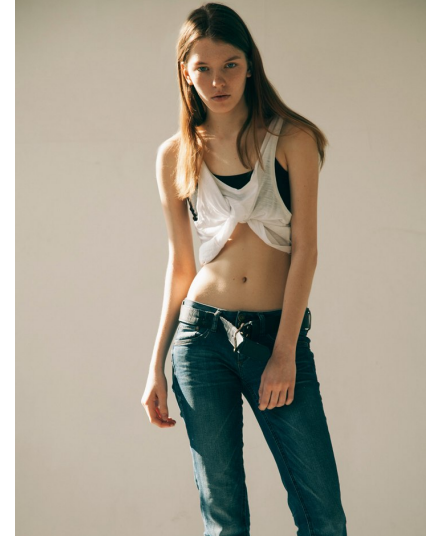


Morph

Morph Management, 36 Jangmun-ro Yongsan-gu Seoul Korea ZIP 04393 | Phone: +82 2 797 7200



ANITA RUBKEVSJUA (@hufiskal)

Height 175/5'9" Bust 75/29.5" Waist 58/23" Hips 88/34.5" Hair Brown Eyes Blue/Green Born in 2000

Morph

Morph Management, 36 Jangmun-ro Yongsan-gu Seoul Korea ZIP 04393 | Phone: +82 2 797 7200



ANITA RUBKEVSJAUA (@hufiskal)

Height 175/5'9" Bust 75/29.5" Waist 58/23" Hips 88/34.5" Hair Brown Eyes Blue/Green Born in 2000

Morph

Morph Management, 36 Jangmun-ro Yongsan-gu Seoul Korea ZIP 04393 | Phone: +82 2 797 7200

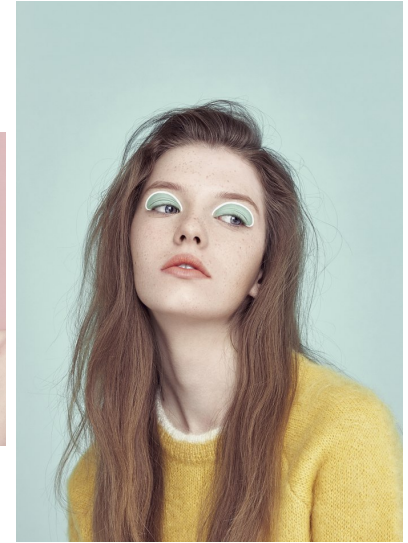


ANITA RUBKEVSJAUJA (@hufiskal)

Height 175/5'9" Bust 75/29.5" Waist 58/23" Hips 88/34.5" Hair Brown Eyes Blue/Green Born in 2000

Morph

Morph Management, 36 Jangmun-ro Yongsan-gu Seoul Korea ZIP 04393 | Phone: +82 2 797 7200



ANITA RUBKEVSJUAU (@hufiskal)

Height 175/5'9" Bust 75/29.5" Waist 58/23" Hips 88/34.5" Hair Brown Eyes Blue/Green Born in 2000

Morph

Morph Management, 36 Jangmun-ro Yongsan-gu Seoul Korea ZIP 04393 | Phone: +82 2 797 7200



*The
Fragrance
of
Lady*



ANITA RUBKEVSJUA (@hufiskal)

Height 175/5'9" Bust 75/29.5" Waist 58/23" Hips 88/34.5" Hair Brown Eyes Blue/Green Born in 2000

Morph

Morph Management, 36 Jangmun-ro Yongsan-gu Seoul Korea ZIP 04393 | Phone: +82 2 797 7200



ANITA RUBKEVSJUAU (@hufiskal)

Height 175/5'9" Bust 75/29.5" Waist 58/23" Hips 88/34.5" Hair Brown Eyes Blue/Green Born in 2000