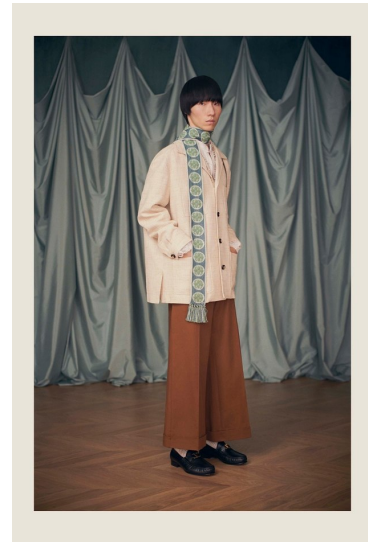
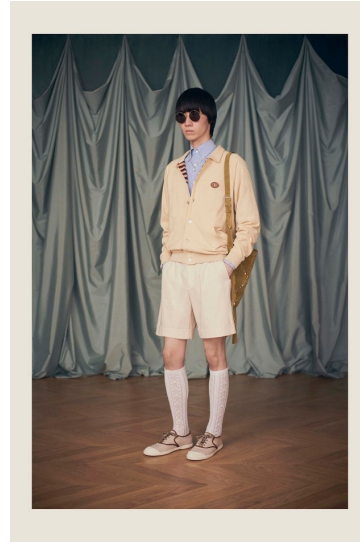
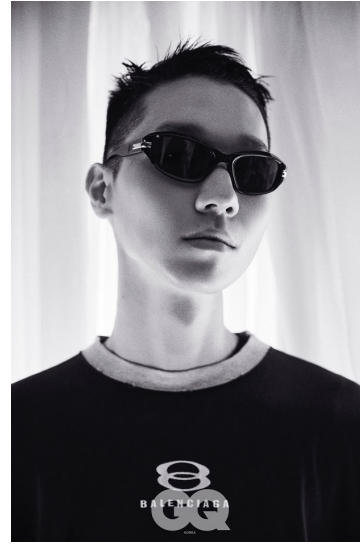
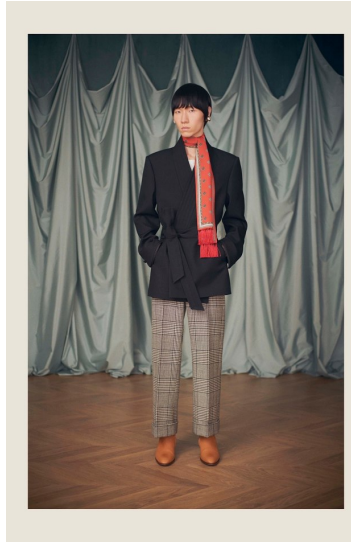


Morph

Morph Management, 36 Jangmun-ro Yongsan-gu Seoul Korea ZIP 04393 | Phone: +82 2 797 7200

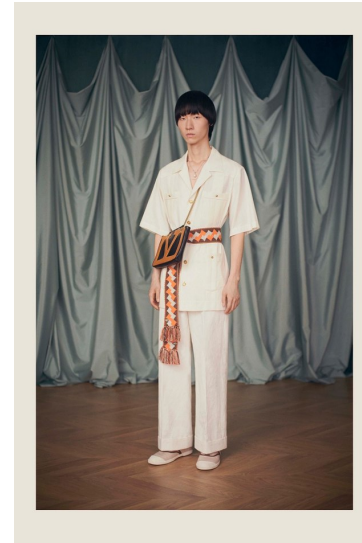


LEE SUNG YOUNG (@sungy0unglee)

Height 187/6'1.5" Chest 79/31" Waist 65/25.5" Hips 86/34" Shoe 270mm Hair Black Eyes Dark Brown Born in 1999

Morph

Morph Management, 36 Jangmun-ro Yongsan-gu Seoul Korea ZIP 04393 | Phone: +82 2 797 7200



LEE SUNG YOUNG (@sungy0unglee)

Height 187/6'1.5" Chest 79/31" Waist 65/25.5" Hips 86/34" Shoe 270mm Hair Black Eyes Dark Brown Born in 1999