

Morph

Morph Management, 36 Jangmun-ro Yongsan-gu Seoul Korea ZIP 04393 | Phone: +82 2 797 7200

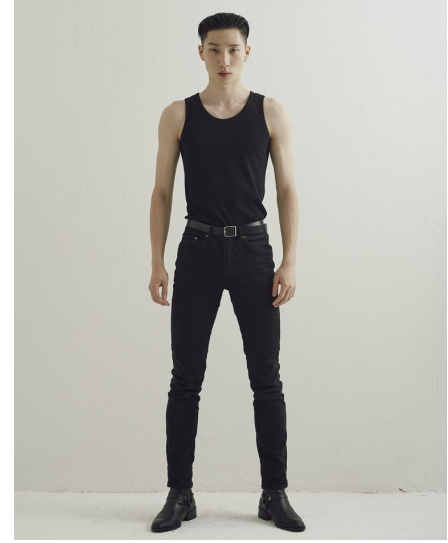


LEE WON YOUNG (@mppgdp)

Height 185/6'1" Chest 81/32" Waist 63/25" Hips 87/34.5" Shoe 275mm Hair Black Eyes Black Born in 2000

Morph

Morph Management, 36 Jangmun-ro Yongsan-gu Seoul Korea ZIP 04393 | Phone: +82 2 797 7200



LEE WON YOUNG (@mppgdp)

Height 185/6'1" Chest 81/32" Waist 63/25" Hips 87/34.5" Shoe 275mm Hair Black Eyes Black Born in 2000